



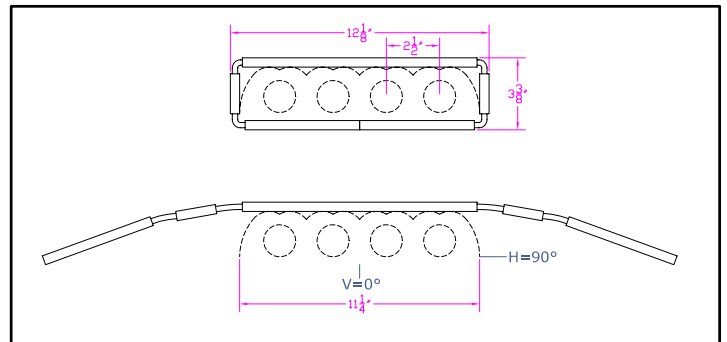
**IES INDOOR REPORT
PHOTOMETRIC FILENAME : LLI010806F.IES**

DESCRIPTION INFORMATION (From Photometric File)

IESNA:LM-63-2002
[TEST] LLI 0108-06F
[TESTLAB] LIGHT LABORATORY INC
[ISSUEDATE] 2/26/2008
[MANUFAC] KINO FLO, INC.
[LUMCAT] 2FT 4BANK/OPEN FACE
[LUMINAIRE] 27"L. X 13"W. X 6.5"H. STUDIO FIXTURE
[MORE] SPECULAR REFLECTOR
[BALLASTCAT] KINOFLO BAL-410-S120
[BALLAST] 120V 50/60Hz ELECTRONIC
[LAMPPOSITION] 0,90
[LAMPCAT] KINO FLO K29 F40/T12/HO/800
[OTHER] INDICATING THE CANDELA VALUES ARE ABSOLUTE AND
[MORE] SHOULD NOT BE FACTORED FOR DIFFERENT LAMP RATINGS.
[_LAMPLUM] 1625
[_INPUT] 120VAC, 110.8W

CHARACTERISTICS

Total Rated Lamp Lumens	N.A. (absolute photometry)
Total Luminaire Efficiency	N.A.
CIE Type	Direct
Spacing Criteria (0-180)	1.26
Spacing Criteria (90-270)	1.30
Spacing Criteria (Diagonal)	1.40
Basic Luminous Shape	Rectangular
Luminous Length (0-180)	1.94 ft
Luminous Width (90-270)	0.94 ft
Luminous Height	0.00 ft



LUMINANCE DATA (cd/sq.m)

Angle In Degrees	Average 0-Deg	Average 45-Deg	Average 90-Deg
45	5396	5654	6121
55	4966	5706	6076
65	4228	5498	5623
75	3008	4785	4967
85	1624	4060	3789

IES INDOOR REPORT
PHOTOMETRIC FILENAME : LLI010806F.IES

CANDELA TABULATION

	<u>0</u>	<u>22.5</u>	<u>45</u>	<u>67.5</u>	<u>90</u>
0	1001	1001	1001	1001	1001
5	1007	1006	1006	1005	1005
15	966	964	962	961	964
25	888	883	881	880	884
35	786	778	777	807	827
45	647	640	678	717	734
55	483	486	555	579	591
65	303	344	394	399	403
75	132	199	210	214	218
85	24	55	60	58	56
90	8	16	10	5	4

IES INDOOR REPORT
PHOTOMETRIC FILENAME : LLI010806F.IES

ZONAL LUMEN SUMMARY

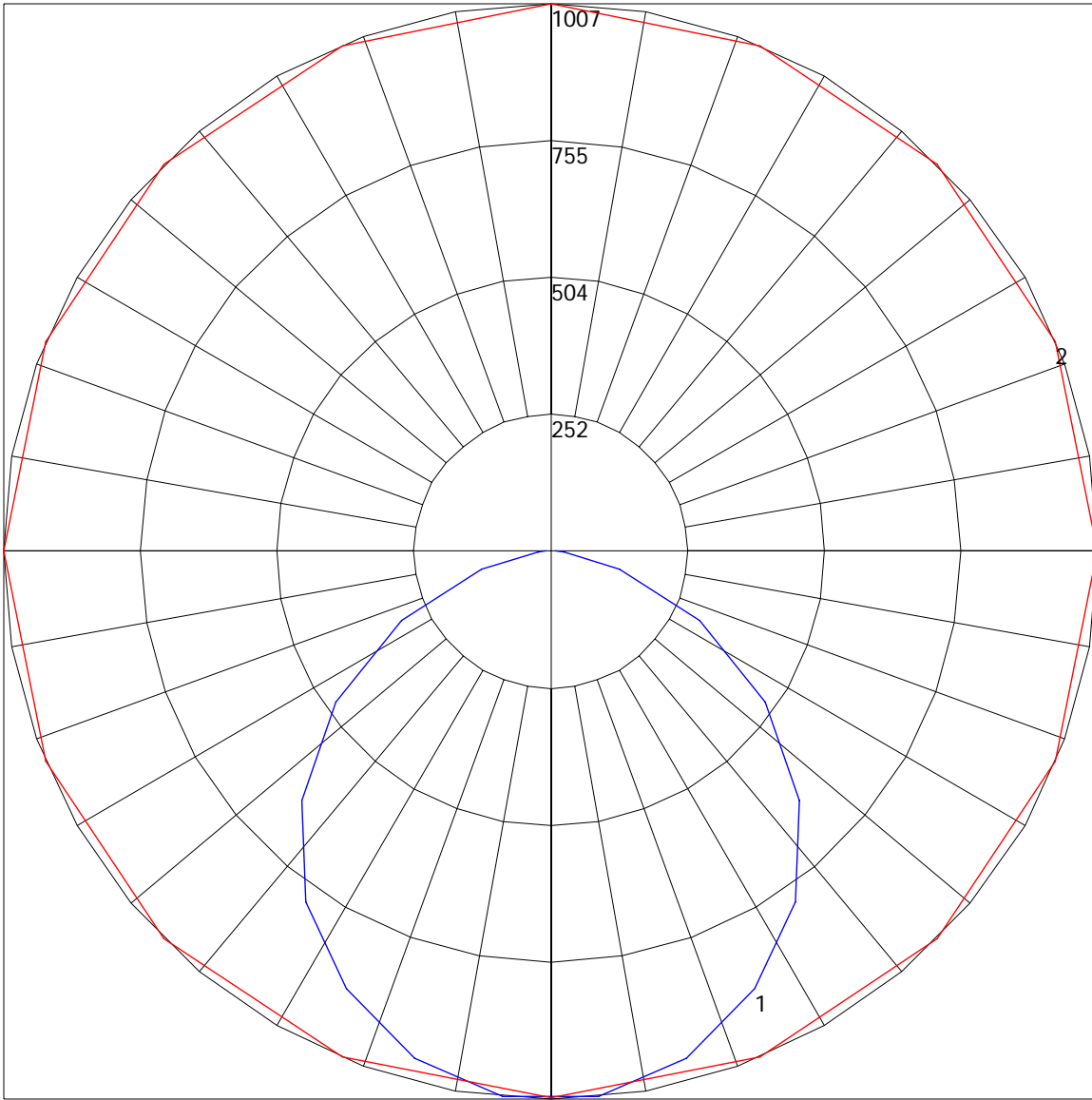
Zone	Lumens	%Lamp	%Fixt
0-30	556.86	N.A.	19
0-40	1015.38	N.A.	34.7
0-60	2046.11	N.A.	69.9
0-90	2926.27	N.A.	100
90-120	0	N.A.	0
90-130	0	N.A.	0
90-150	0	N.A.	0
90-180	0	N.A.	0
0-180	2926.27	N.A.	100

Total Luminaire Efficiency = N.A.%

ZONAL LUMEN SUMMARY

Zone	Lumens
0-10	23.99
10-20	187.21
20-30	345.65
30-40	458.53
40-50	518.67
50-60	512.05
60-70	432.4
70-80	294.35
80-90	153.42
90-100	0
100-110	0
110-120	0
120-130	0
130-140	0
140-150	0
150-160	0
160-170	0
170-180	0

POLAR GRAPH



Maximum Candela = 1007 Located At Horizontal Angle = 0, Vertical Angle = 5
1 - Vertical Plane Through Horizontal Angles (0 - 180) (Through Max. Cd.)
2 - Horizontal Cone Through Vertical Angle (5) (Through Max. Cd.)