



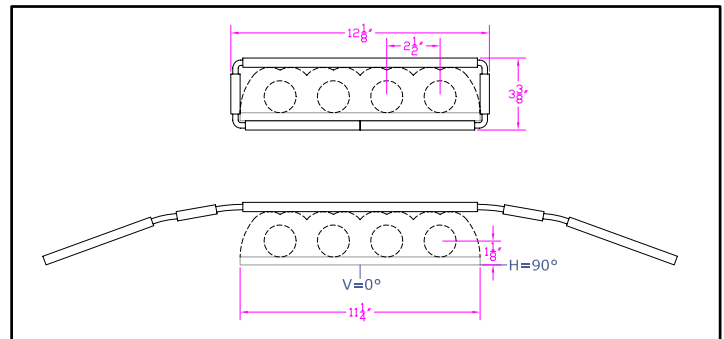
**IES INDOOR REPORT  
PHOTOMETRIC FILENAME : LLI010806G.IES**

**DESCRIPTION INFORMATION (From Photometric File)**

IESNA:LM-63-2002  
[TEST] LLI 0108-06G  
[TESTLAB] LIGHT LABORATORY INC  
[ISSUEDATE] 2/26/2008  
[MANUFAC] KINO FLO, INC.  
[LUMCAT] 2FT 4BANK w/ BLACK LOUVER  
[LUMINAIRE] 27"L. X 13"W. X 6.5"H. STUDIO FIXTURE  
[MORE] SPECULAR REFLECTOR  
[MORE] BLACK SQUARE LOUVERS  
[BALLASTCAT] KINOFLO BAL-410-S120  
[BALLAST] 120V 50/60Hz ELECTRONIC  
[LAMPPOSITION] 0,90  
[LAMPCAT] KINO FLO K29 F40/T12/HO/800  
[OTHER] INDICATING THE CANDELA VALUES ARE ABSOLUTE AND  
[MORE] SHOULD NOT BE FACTORED FOR DIFFERENT LAMP RATINGS.  
[\_LAMPLUM] 1625  
[\_INPUT] 120VAC, 107.4W

**CHARACTERISTICS**

Total Rated Lamp Lumens	N.A. (absolute photometry)
Total Luminaire Efficiency	N.A.
CIE Type	Direct
Spacing Criteria (0-180)	0.92
Spacing Criteria (90-270)	0.90
Spacing Criteria (Diagonal)	0.96
Basic Luminous Shape	Rectangular
Luminous Length (0-180)	1.94 ft
Luminous Width (90-270)	0.94 ft
Luminous Height	0.00 ft



**LUMINANCE DATA (cd/sq.m)**

Angle In Degrees	Average 0-Deg	Average 45-Deg	Average 90-Deg
45	1760	1635	1993
55	679	936	822
65	391	419	586
75	501	638	797
85	1015	1489	1489

IES INDOOR REPORT  
PHOTOMETRIC FILENAME : LLI010806G.IES

CANDELA TABULATION

	<u>0</u>	<u>22.5</u>	<u>45</u>	<u>67.5</u>	<u>90</u>
<b>0</b>	795	795	795	795	795
<b>5</b>	774	771	771	772	773
<b>15</b>	660	650	640	643	654
<b>25</b>	514	492	476	490	507
<b>35</b>	367	340	326	346	380
<b>45</b>	211	194	196	215	239
<b>55</b>	66	71	91	86	80
<b>65</b>	28	28	30	38	42
<b>75</b>	22	25	28	33	35
<b>85</b>	15	22	22	23	22
<b>90</b>	5	14	6	2	1

**IES INDOOR REPORT**  
**PHOTOMETRIC FILENAME : LLI010806G.IES**

**ZONAL LUMEN SUMMARY**

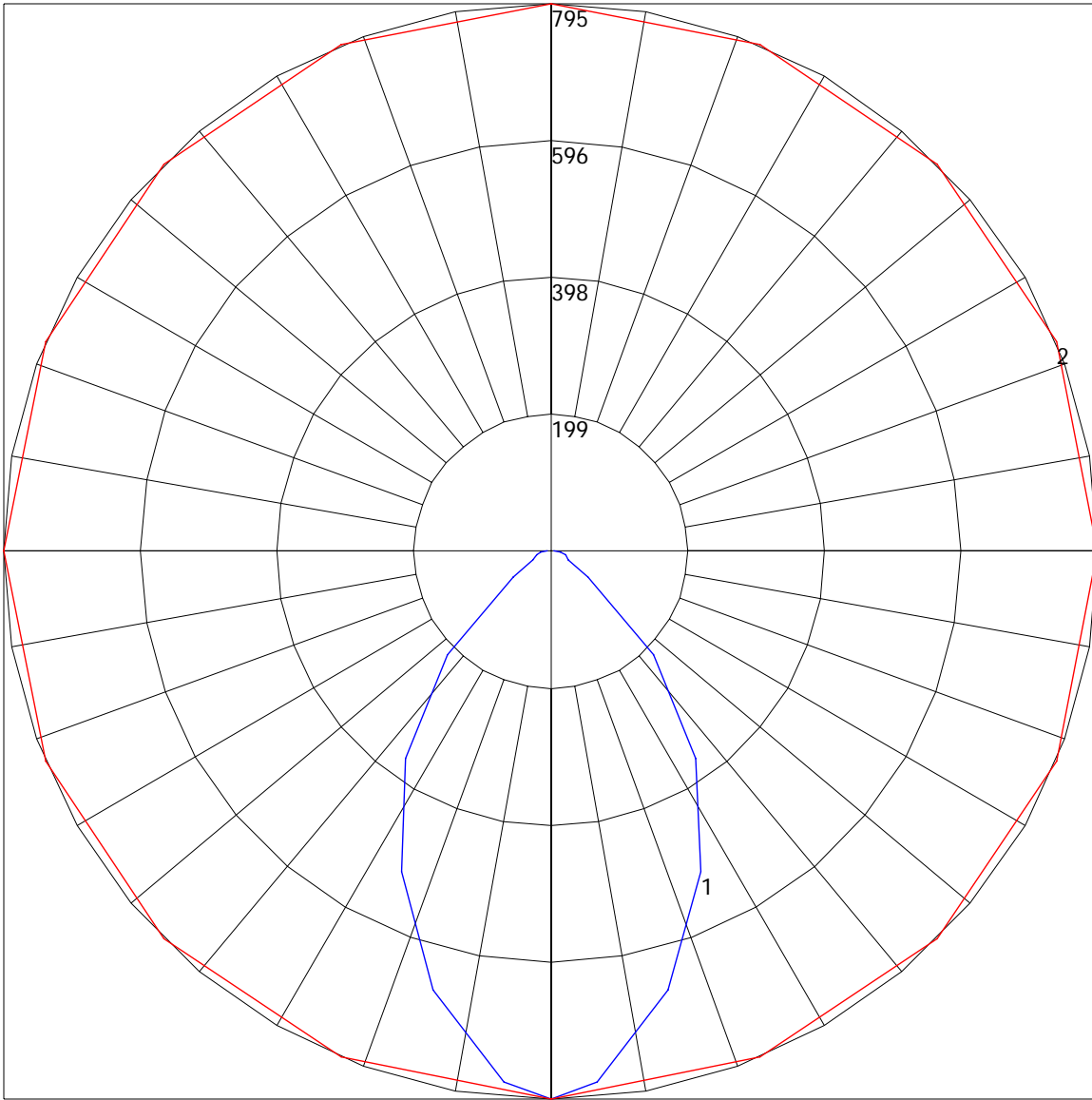
Zone	Lumens	%Lamp	%Fixt
0-30	367.15	N.A.	35.6
0-40	596.74	N.A.	57.8
0-60	912.41	N.A.	88.4
0-90	1032.11	N.A.	100
90-120	0	N.A.	0
90-130	0	N.A.	0
90-150	0	N.A.	0
90-180	0	N.A.	0
0-180	1032.11	N.A.	100

Total Luminaire Efficiency = N.A.%

**ZONAL LUMEN SUMMARY**

Zone	Lumens
0-10	18.73
10-20	134.97
20-30	213.45
30-40	229.59
40-50	194.96
50-60	120.71
60-70	53.59
70-80	31.58
80-90	34.53
90-100	0
100-110	0
110-120	0
120-130	0
130-140	0
140-150	0
150-160	0
160-170	0
170-180	0

POLAR GRAPH



Maximum Candela = 795 Located At Horizontal Angle = 0, Vertical Angle = 0  
# 1 - Vertical Plane Through Horizontal Angles (0 - 180) (Through Max. Cd.)  
# 2 - Horizontal Cone Through Vertical Angle (0) (Through Max. Cd.)