



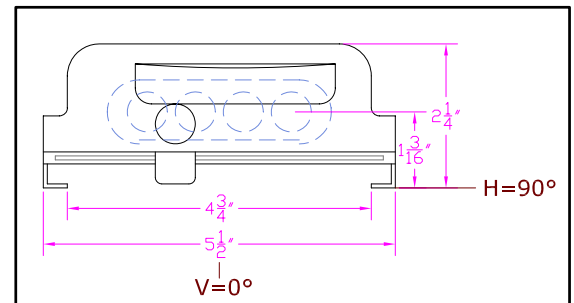
**IES INDOOR REPORT
PHOTOMETRIC FILENAME : LLI040707A.IES**

DESCRIPTION INFORMATION (From Photometric File)

IESNA:LM-63-2002
[TEST] LLI 0407-07A
[TESTLAB] LIGHT LABORATORY INC
[ISSUEDATE] 4/24/2007
[MANUFAC] KINO FLO, INC.
[LUMCAT] BARFLY 100/OPEN FACE
[LUMINAIRE] 16"L. X 5.5"W. X 2.5"H. STUDIO FIXTURE
[MORE] WHITE PAINTED REFLECTOR
[BALLASTCAT] KINOFLO BAL-107-120
[BALLAST] 120V 50/60Hz ELECTRONIC
[LAMPPOSITION] 180,90
[LAMPCAT] KINO FLO TRUE MATCH 55Q-K29
[OTHER] INDICATING THE CANDELA VALUES ARE ABSOLUTE AND
[MORE] SHOULD NOT BE FACTORED FOR DIFFERENT LAMP RATINGS.
[_LAMPLUM] 2720
[_INPUT] 120VAC, 65.44W

CHARACTERISTICS

Total Rated Lamp Lumens	N.A. (absolute photometry)
Total Luminaire Efficiency	N.A.
CIE Type	Direct
Spacing Criteria (0-180)	1.26
Spacing Criteria (90-270)	1.28
Spacing Criteria (Diagonal)	1.40
Basic Luminous Shape	Rectangular
Luminous Length (0-180)	1.15 ft
Luminous Width (90-270)	0.40 ft
Luminous Height	0.00 ft



LUMINANCE DATA (cd/sq.m)

Angle In Degrees	Average 0-Deg	Average 45-Deg	Average 90-Deg
45	14580	14679	13390
55	13817	12635	10149
65	12612	9072	5919
75	10297	4968	994
85	4828	1073	805

IES INDOOR REPORT
PHOTOMETRIC FILENAME : LLI040707A.IES

CANDELA TABULATION

	<u>0</u>	<u>22.5</u>	<u>45</u>	<u>67.5</u>	<u>90</u>
0	659	659	659	659	659
5	659	659	659	660	661
15	631	634	636	640	642
25	584	587	595	603	604
35	523	529	540	537	531
45	441	451	444	416	405
55	339	350	310	263	249
65	228	216	164	119	107
75	114	93	55	13	11
85	18	8	4	3	3
90	0	0	0	0	0

IES INDOOR REPORT
PHOTOMETRIC FILENAME : LLI040707A.IES

ZONAL LUMEN SUMMARY

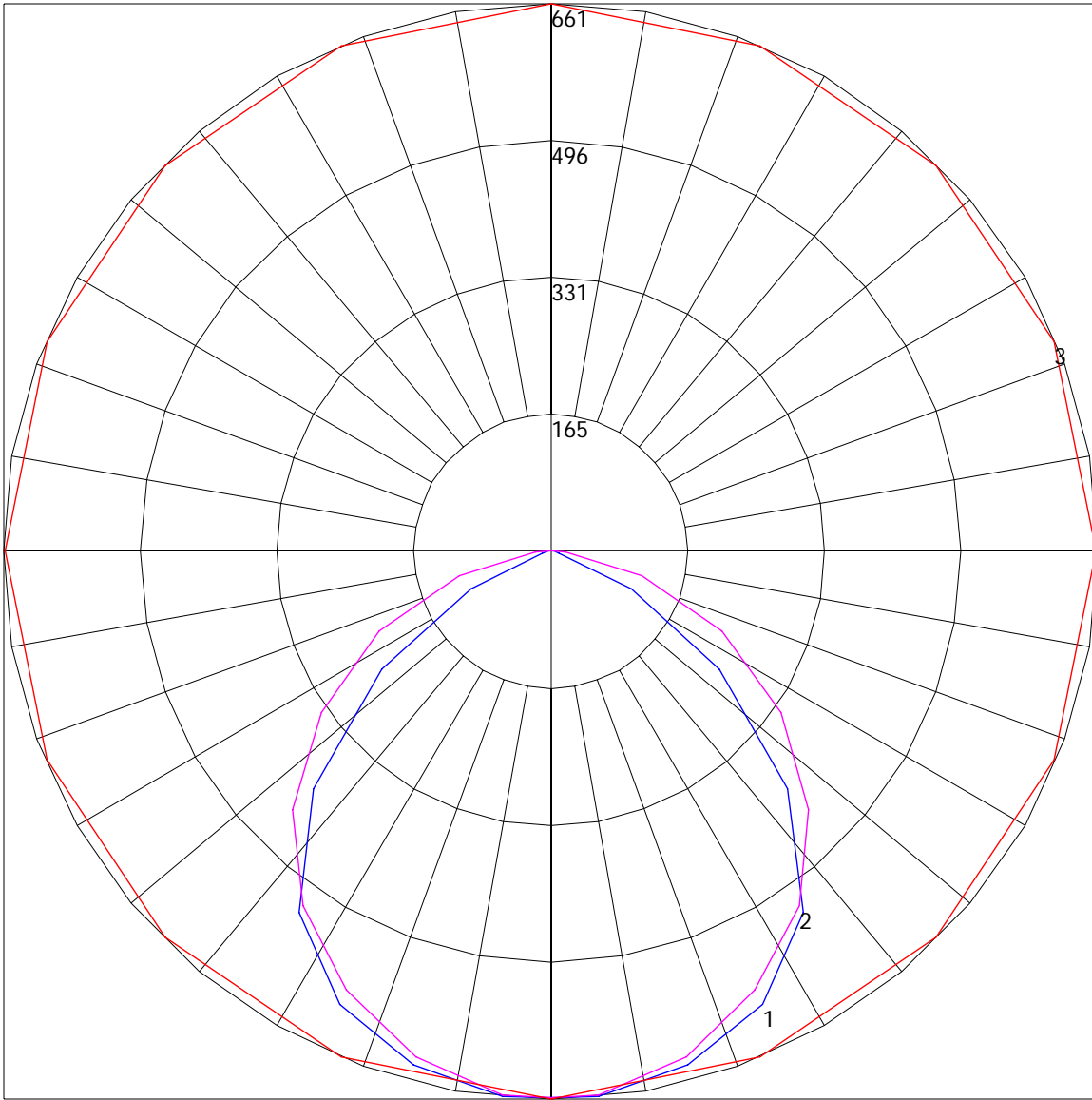
Zone	Lumens	%Lamp	%Fixt
0-30	369.65	N.A.	21.7
0-40	678.5	N.A.	39.9
0-60	1328.28	N.A.	78.1
0-90	1701.41	N.A.	100
90-120	0	N.A.	0
90-130	0	N.A.	0
90-150	0	N.A.	0
90-180	0	N.A.	0
0-180	1701.41	N.A.	100

Total Luminaire Efficiency = N.A.%

ZONAL LUMEN SUMMARY

Zone	Lumens
0-10	15.76
10-20	123.25
20-30	230.63
30-40	308.86
40-50	340.3
50-60	309.48
60-70	223.31
70-80	114.5
80-90	35.32
90-100	0
100-110	0
110-120	0
120-130	0
130-140	0
140-150	0
150-160	0
160-170	0
170-180	0

POLAR GRAPH



Maximum Candela = 661 Located At Horizontal Angle = 90, Vertical Angle = 5
1 - Vertical Plane Through Horizontal Angles (90 - 270) (Through Max. Cd.) : BLUE
2 - Vertical Plane Through Horizontal Angles (0 - 180) : MAGENTA
3 - Horizontal Cone Through Vertical Angle (5) (Through Max. Cd.) : RED