



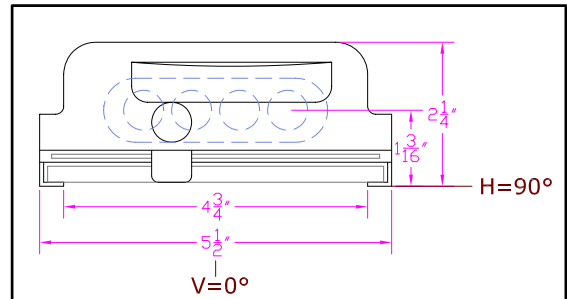
**IES INDOOR REPORT
PHOTOMETRIC FILENAME : LLI040707C.IES**

DESCRIPTION INFORMATION (From Photometric File)

IESNA:LM-63-2002
[TEST] LLI 0407-07C
[TESTLAB] LIGHT LABORATORY INC
[ISSUEDATE] 4/24/2007
[MANUFAC] KINO FLO, INC.
[LUMCAT] BARFLY 100 w/ Honeycomb Louver 60°
[LUMINAIRE] 16"L. X 5.5"W. X 2.5"H. STUDIO FIXTURE
[MORE] WHITE PAINTED REFLECTOR
[MORE] 60 DEGREE SPOT HEXCEL LOUVERS
[BALLASTCAT] KINOFLO BAL-107-120
[BALLAST] 120V 50/60Hz ELECTRONIC
[LAMPPOSITION] 180,90
[LAMPCAT] KINO FLO TRUE MATCH 55Q-K29
[OTHER] INDICATING THE CANDELA VALUES ARE ABSOLUTE AND
[MORE] SHOULD NOT BE FACTORED FOR DIFFERENT LAMP RATINGS.
[_LAMPLUM] 2720
[_INPUT] 120VAC, 63.03W

CHARACTERISTICS

Total Rated Lamp Lumens	N.A. (absolute photometry)
Total Luminaire Efficiency	N.A.
CIE Type	Direct
Spacing Criteria (0-180)	0.58
Spacing Criteria (90-270)	0.64
Spacing Criteria (Diagonal)	0.66
Basic Luminous Shape	Rectangular
Luminous Length (0-180)	1.15 ft
Luminous Width (90-270)	0.40 ft
Luminous Height	0.00 ft



LUMINANCE DATA (cd/sq.m)

Angle In Degrees	Average 0-Deg	Average 45-Deg	Average 90-Deg
45	364	397	264
55	163	163	82
65	111	111	55
75	90	90	90
85	536	0	0

IES INDOOR REPORT
PHOTOMETRIC FILENAME : LLI040707C.IES

CANDELA TABULATION

	<u>0</u>	<u>22.5</u>	<u>45</u>	<u>67.5</u>	<u>90</u>
0	575	575	575	575	575
5	511	515	523	523	525
15	341	350	367	368	371
25	176	179	193	203	199
35	45	45	45	57	65
45	11	12	12	9	8
55	4	4	4	3	2
65	2	1	2	1	1
75	1	1	1	1	1
85	2	1	0	0	0
90	0	0	0	0	0

IES INDOOR REPORT
PHOTOMETRIC FILENAME : LLI040707C.IES

ZONAL LUMEN SUMMARY

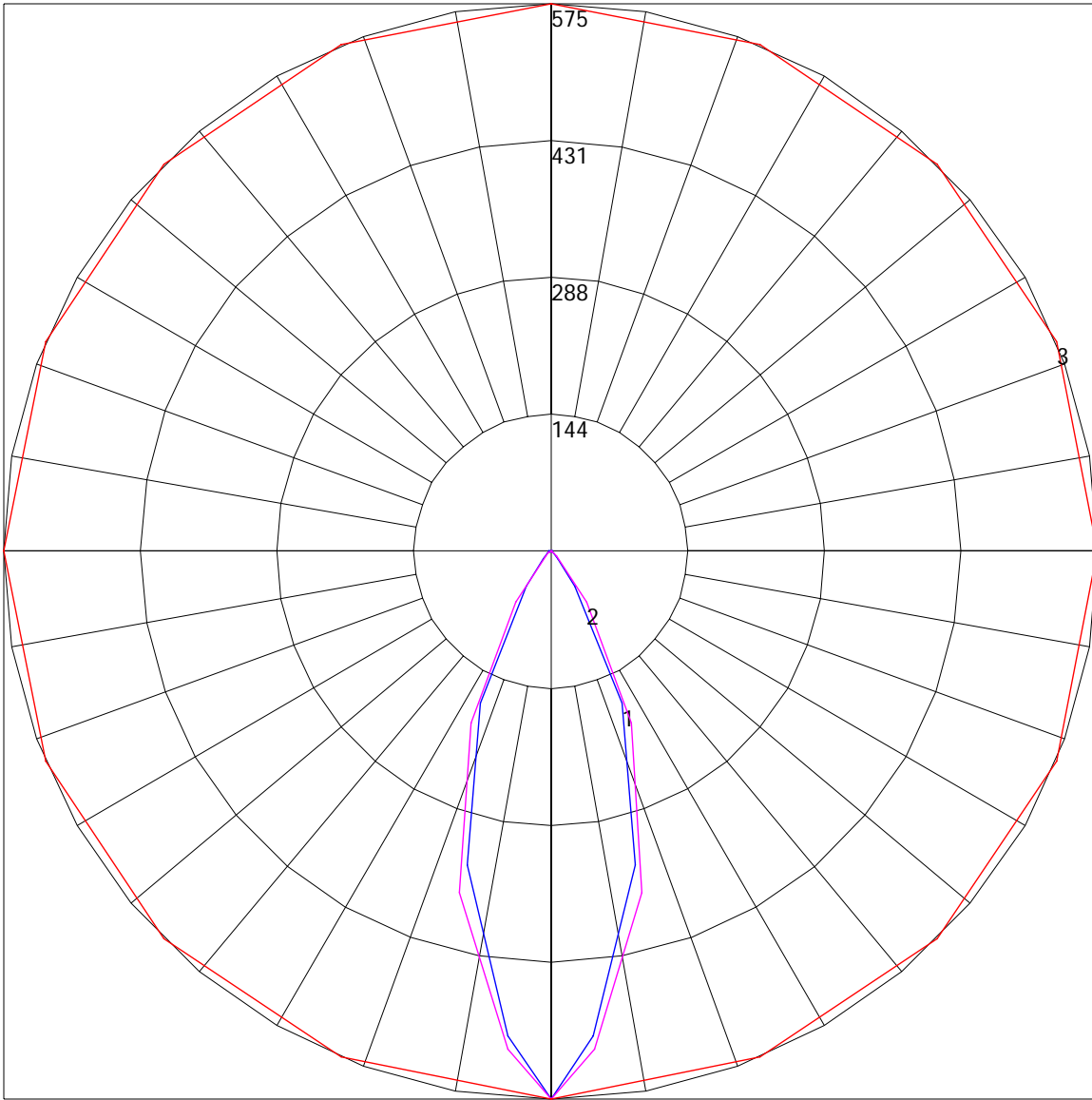
Zone	Lumens	%Lamp	%Fixt
0-30	199.95	N.A.	67.1
0-40	265.97	N.A.	89.3
0-60	293.41	N.A.	98.5
0-90	297.89	N.A.	100
90-120	0	N.A.	0
90-130	0	N.A.	0
90-150	0	N.A.	0
90-180	0	N.A.	0
0-180	297.89	N.A.	100

Total Luminaire Efficiency = N.A.%

ZONAL LUMEN SUMMARY

Zone	Lumens
0-10	13.09
10-20	83.68
20-30	103.18
30-40	66.02
40-50	21.52
50-60	5.93
60-70	2.31
70-80	1.22
80-90	.95
90-100	0
100-110	0
110-120	0
120-130	0
130-140	0
140-150	0
150-160	0
160-170	0
170-180	0

POLAR GRAPH



Maximum Candela = 575 Located At Horizontal Angle = 0, Vertical Angle = 0
1 - Vertical Plane Through Horizontal Angles (0 - 180) (Through Max. Cd.) : BLUE
2 - Vertical Plane Through Horizontal Angles (90 - 270) : MAGENTA
3 - Horizontal Cone Through Vertical Angle (0) (Through Max. Cd.) : RED