

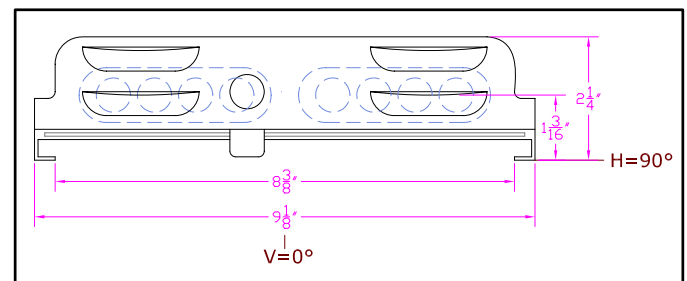
**IES INDOOR REPORT
PHOTOMETRIC FILENAME : LLI040707E.IES**

DESCRIPTION INFORMATION (From Photometric File)

IESNA:LM-63-2002
[TEST] LLI 0407-07E
[TESTLAB] LIGHT LABORATORY INC
[ISSUEDATE] 4/24/2007
[MANUFAC] KINO FLO, INC.
[LUMCAT] BARFLY 200/OPEN FACE
[LUMINAIRE] 16.5"L. X 9"W. X 2.5"H. STUDIO FIXTURE
[MORE] WHITE PAINTED REFLECTOR
[BALLASTCAT] KINOFLO BAL-207-120
[BALLAST] 120V 50/60Hz ELECTRONIC
[LAMPPOSITION] 180,90
[LAMPCAT] KINO FLO TRUE MATCH 55Q-K29
[OTHER] INDICATING THE CANDELA VALUES ARE ABSOLUTE AND
[MORE] SHOULD NOT BE FACTORED FOR DIFFERENT LAMP RATINGS.
[_LAMPLUM] 2720
[_INPUT] 120VAC, 123.8W

CHARACTERISTICS

Total Rated Lamp Lumens	N.A. (absolute photometry)
Total Luminaire Efficiency	N.A.
CIE Type	Direct
Spacing Criteria (0-180)	1.26
Spacing Criteria (90-270)	1.30
Spacing Criteria (Diagonal)	1.42
Basic Luminous Shape	Rectangular
Luminous Length (0-180)	1.15 ft
Luminous Width (90-270)	0.70 ft
Luminous Height	0.00 ft



LUMINANCE DATA (cd/sq.m)

Angle In Degrees	Average 0-Deg	Average 45-Deg	Average 90-Deg
45	16077	16890	16625
55	15418	15721	14789
65	14193	13497	12106
75	11562	9445	6865
85	5058	1379	920

IES INDOOR REPORT
PHOTOMETRIC FILENAME : LLI040707E.IES

CANDELA TABULATION

	<u>0</u>	<u>22.5</u>	<u>45</u>	<u>67.5</u>	<u>90</u>
0	1282	1282	1282	1282	1282
5	1263	1264	1267	1267	1267
15	1215	1222	1227	1234	1236
25	1135	1141	1158	1173	1180
35	1009	1022	1052	1064	1064
45	851	871	894	883	880
55	662	688	675	645	635
65	449	467	427	396	383
75	224	225	183	152	133
85	33	36	9	6	6
90	0	0	0	0	0

IES INDOOR REPORT
PHOTOMETRIC FILENAME : LLI040707E.IES

ZONAL LUMEN SUMMARY

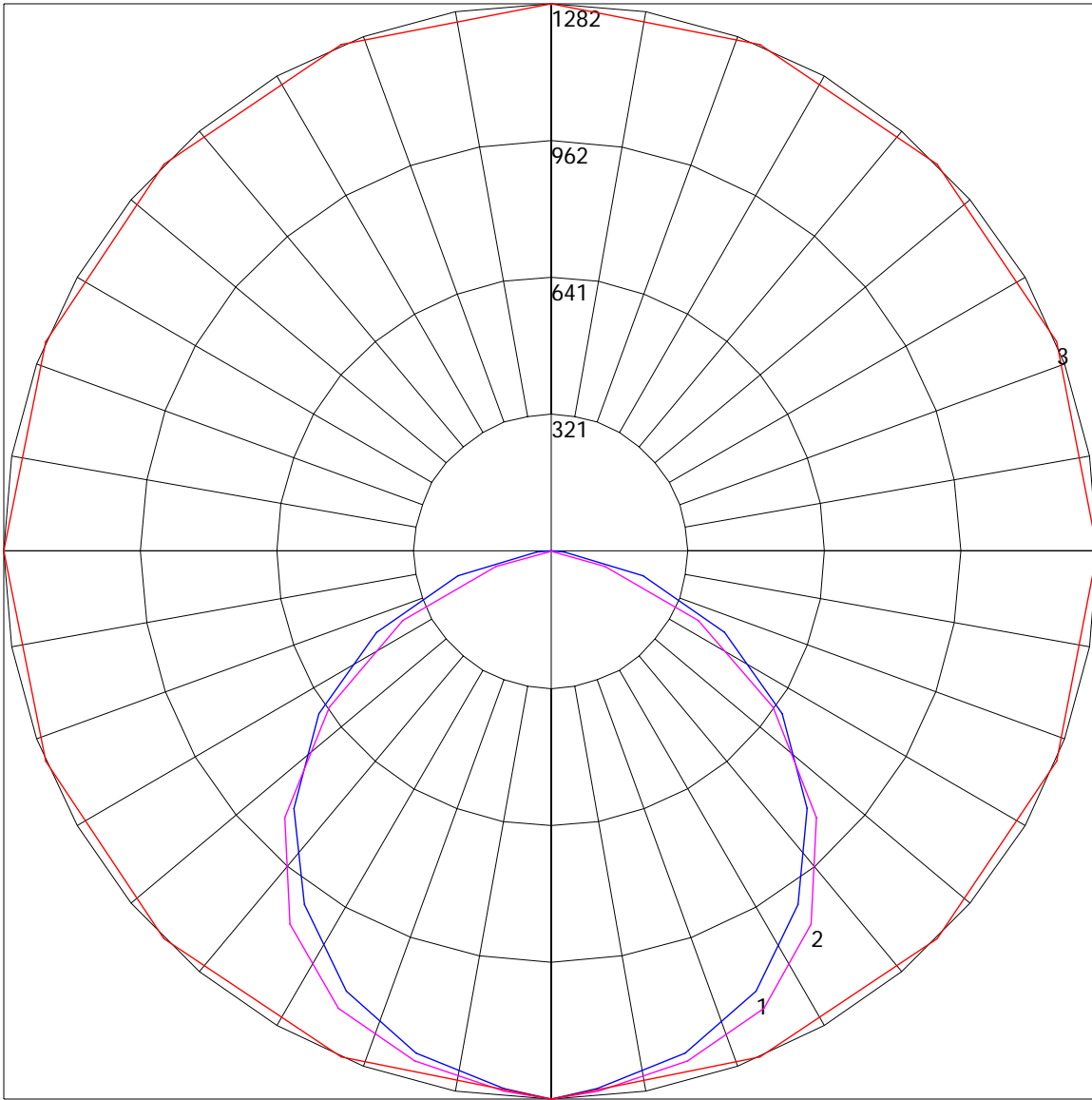
Zone	Lumens	%Lamp	%Fixt
0-30	714.12	N.A.	19.9
0-40	1316.77	N.A.	36.7
0-60	2640.39	N.A.	73.6
0-90	3585.99	N.A.	100
90-120	0	N.A.	0
90-130	0	N.A.	0
90-150	0	N.A.	0
90-180	0	N.A.	0
0-180	3585.99	N.A.	100

Total Luminaire Efficiency = N.A.%

ZONAL LUMEN SUMMARY

Zone	Lumens
0-10	30.46
10-20	237.05
20-30	446.61
30-40	602.65
40-50	676.55
50-60	647.08
60-70	517.23
70-80	314.48
80-90	113.9
90-100	0
100-110	0
110-120	0
120-130	0
130-140	0
140-150	0
150-160	0
160-170	0
170-180	0

POLAR GRAPH



Maximum Candela = 1282 Located At Horizontal Angle = 0, Vertical Angle = 0
1 - Vertical Plane Through Horizontal Angles (0 - 180) (Through Max. Cd.) : BLUE
2 - Vertical Plane Through Horizontal Angles (90 - 270) : MAGENTA
3 - Horizontal Cone Through Vertical Angle (0) (Through Max. Cd.) : RED