

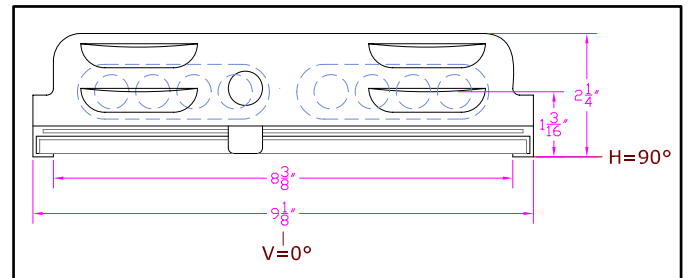
**IES INDOOR REPORT  
PHOTOMETRIC FILENAME : LLI040707H.IES**

**DESCRIPTION INFORMATION (From Photometric File)**

IESNA:LM-63-2002  
[TEST] LLI 0407-07H  
[TESTLAB] LIGHT LABORATORY INC  
[ISSUE DATE] 4/24/2007  
[MANUFAC] KINO FLO, INC.  
[LUMCAT] BARFLY 200 w/ Honeycomb Louver 45°  
[LUMINAIRE] 16.5"L. X 9"W. X 2.5"H. STUDIO FIXTURE  
[MORE] WHITE PAINTED REFLECTOR  
[MORE] 45 DEGREE SPOT HEXCEL LOUVERS  
[BALLASTCAT] KINOFLO BAL-207-120  
[BALLAST] 120V 50/60Hz ELECTRONIC  
[LAMPPOSITION] 180,90  
[LAMPCAT] KINO FLO TRUE MATCH 55Q-K29  
[OTHER] INDICATING THE CANDELA VALUES ARE ABSOLUTE AND  
[MORE] SHOULD NOT BE FACTORED FOR DIFFERENT LAMP RATINGS.  
[\_LAMPLUM] 2720  
[\_INPUT] 120VAC, 117.3W

**CHARACTERISTICS**

Total Rated Lamp Lumens	N.A. (absolute photometry)
Total Luminaire Efficiency	N.A.
CIE Type	Direct
Spacing Criteria (0-180)	0.42
Spacing Criteria (90-270)	0.48
Spacing Criteria (Diagonal)	0.50
Basic Luminous Shape	Rectangular
Luminous Length (0-180)	1.15 ft
Luminous Width (90-270)	0.70 ft
Luminous Height	0.00 ft



**LUMINANCE DATA (cd/sq.m)**

Angle In Degrees	Average 0-Deg	Average 45-Deg	Average 90-Deg
45	132	151	57
55	70	70	23
65	32	32	32
75	103	52	52
85	613	153	153

IES INDOOR REPORT  
PHOTOMETRIC FILENAME : LLI040707H.IES

CANDELA TABULATION

	<u>0</u>	<u>22.5</u>	<u>45</u>	<u>67.5</u>	<u>90</u>
<b>0</b>	1035	1035	1035	1035	1035
<b>5</b>	833	849	878	886	888
<b>15</b>	392	406	456	484	480
<b>25</b>	70	75	79	117	146
<b>35</b>	21	23	23	16	12
<b>45</b>	7	8	8	6	3
<b>55</b>	3	3	3	2	1
<b>65</b>	1	1	1	1	1
<b>75</b>	2	1	1	1	1
<b>85</b>	4	4	1	0	1
<b>90</b>	0	0	0	0	0

**IES INDOOR REPORT**  
**PHOTOMETRIC FILENAME : LLI040707H.IES**

**ZONAL LUMEN SUMMARY**

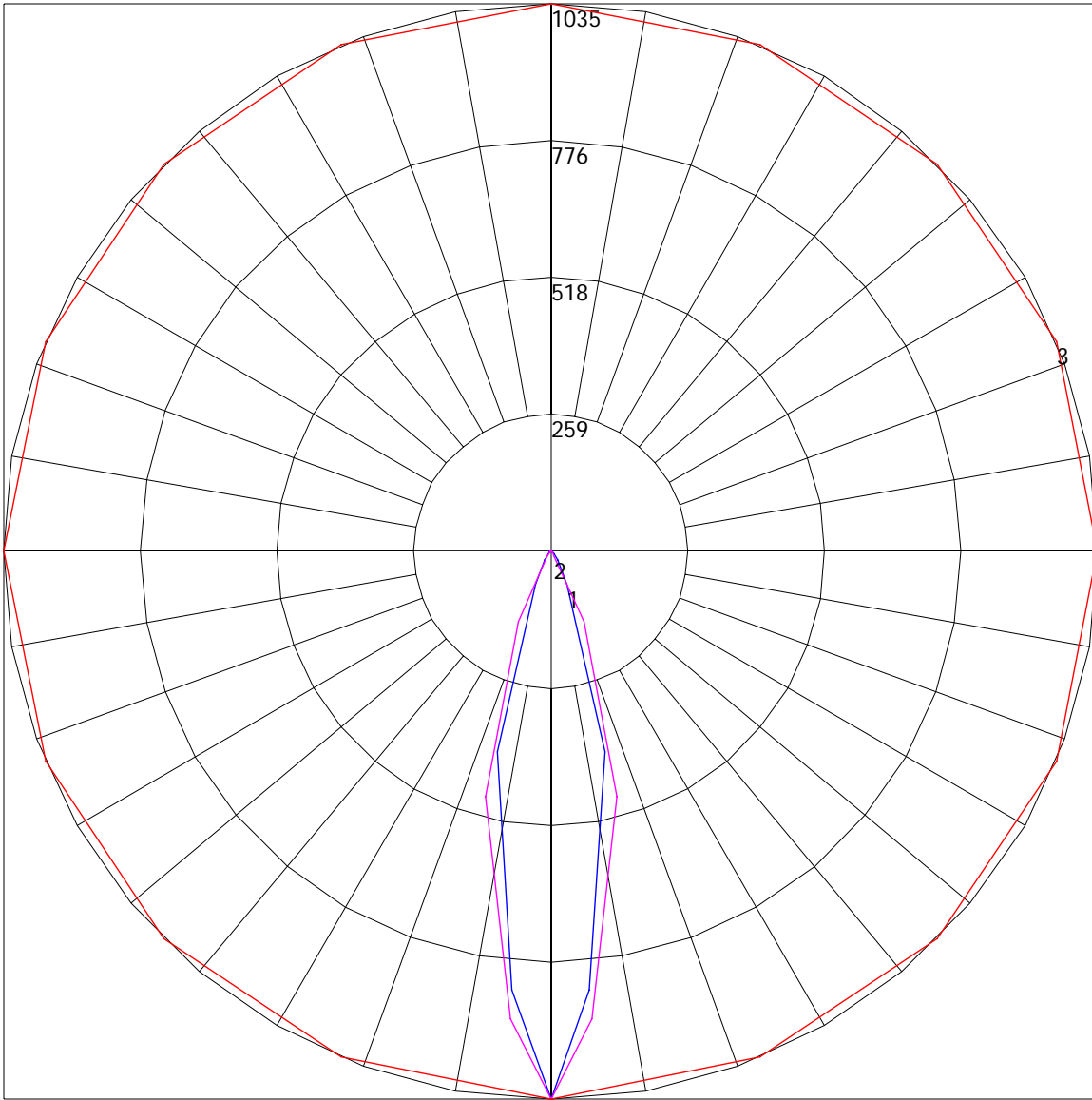
Zone	Lumens	%Lamp	%Fixt
0-30	248.88	N.A.	83.4
0-40	280.2	N.A.	93.9
0-60	293.36	N.A.	98.4
0-90	298.25	N.A.	100
90-120	0	N.A.	0
90-130	0	N.A.	0
90-150	0	N.A.	0
90-180	0	N.A.	0
0-180	298.25	N.A.	100

Total Luminaire Efficiency = N.A.%

**ZONAL LUMEN SUMMARY**

Zone	Lumens
0-10	22.75
10-20	124.94
20-30	101.19
30-40	31.32
40-50	9.28
50-60	3.88
60-70	1.66
70-80	1.09
80-90	2.13
90-100	0
100-110	0
110-120	0
120-130	0
130-140	0
140-150	0
150-160	0
160-170	0
170-180	0

POLAR GRAPH



Maximum Candela = 1035 Located At Horizontal Angle = 0, Vertical Angle = 0  
# 1 - Vertical Plane Through Horizontal Angles (0 - 180) (Through Max. Cd.) : BLUE  
# 2 - Vertical Plane Through Horizontal Angles (90 - 270) : MAGENTA  
# 3 - Horizontal Cone Through Vertical Angle (0) (Through Max. Cd.) : RED