



**IES INDOOR REPORT
PHOTOMETRIC FILENAME : LLI070702C.IES**

DESCRIPTION INFORMATION (From Photometric File)

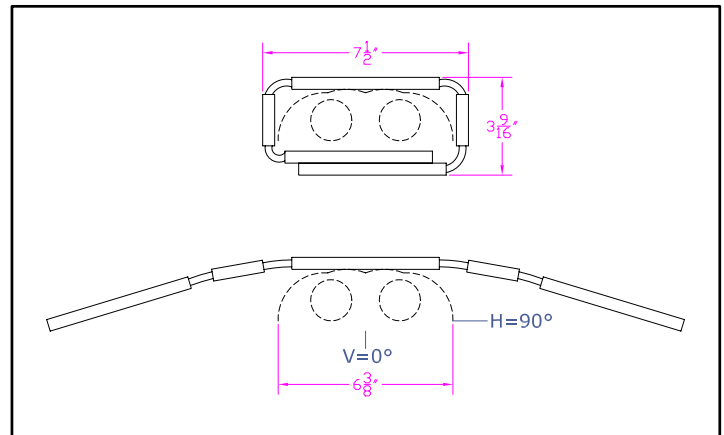
IESNA:LM-63-2002
[TEST] LLI 0707-02C
[TESTLAB] LIGHT LABORATORY INC
[ISSUEDATE] 7/13/2007
[MANUFAC] KINO FLO, INC.
[LUMCAT] 4FT DOUBLE/OPEN FACE
[LUMINAIRE] 52"L. X 7.5"W. X 3.5"H. STUDIO FIXTURE
[MORE] SPECULAR REFLECTOR
[BALLASTCAT] KINOFLO BAL-200-S120
[BALLAST] 110/120V 50/60Hz ELECTRONIC
[LAMPPOSITION] 0,90
[LAMPCAT] KINO FLO F75/T12/HO/800
[OTHER] INDICATING THE CANDELA VALUES ARE ABSOLUTE AND
[MORE] SHOULD NOT BE FACTORED FOR DIFFERENT LAMP RATINGS.
[_LAMPLUM] 3290
[_INPUT] 120VAC, 158.9W

CHARACTERISTICS

Total Rated Lamp Lumens	N.A. (absolute photometry)
Total Luminaire Efficiency	N.A.
CIE Type	Direct
Spacing Criteria (0-180)	1.32
Spacing Criteria (90-270)	1.32
Spacing Criteria (Diagonal)	1.44
Basic Luminous Shape	Rectangular
Luminous Length (0-180)	3.85 ft
Luminous Width (90-270)	0.53 ft
Luminous Height	0.00 ft

LUMINANCE DATA (cd/sq.m)

Angle In Degrees	Average 0-Deg	Average 45-Deg	Average 90-Deg
45	7729	8124	7967
55	7158	7893	7553
65	6123	7233	6821
75	4419	6088	5864
85	2479	4777	4475



IES INDOOR REPORT
PHOTOMETRIC FILENAME : LLI070702C.IES

CANDELA TABULATION

	<u>0</u>	<u>22.5</u>	<u>45</u>	<u>67.5</u>	<u>90</u>
0	1498	1498	1498	1498	1498
5	1587	1582	1528	1466	1441
15	1537	1537	1507	1454	1431
25	1418	1426	1405	1370	1360
35	1248	1260	1260	1257	1255
45	1037	1051	1090	1077	1069
55	779	813	859	840	822
65	491	557	580	557	547
75	217	290	299	291	288
85	41	71	79	77	74
90	11	14	10	7	7

IES INDOOR REPORT
PHOTOMETRIC FILENAME : LLI070702C.IES

ZONAL LUMEN SUMMARY

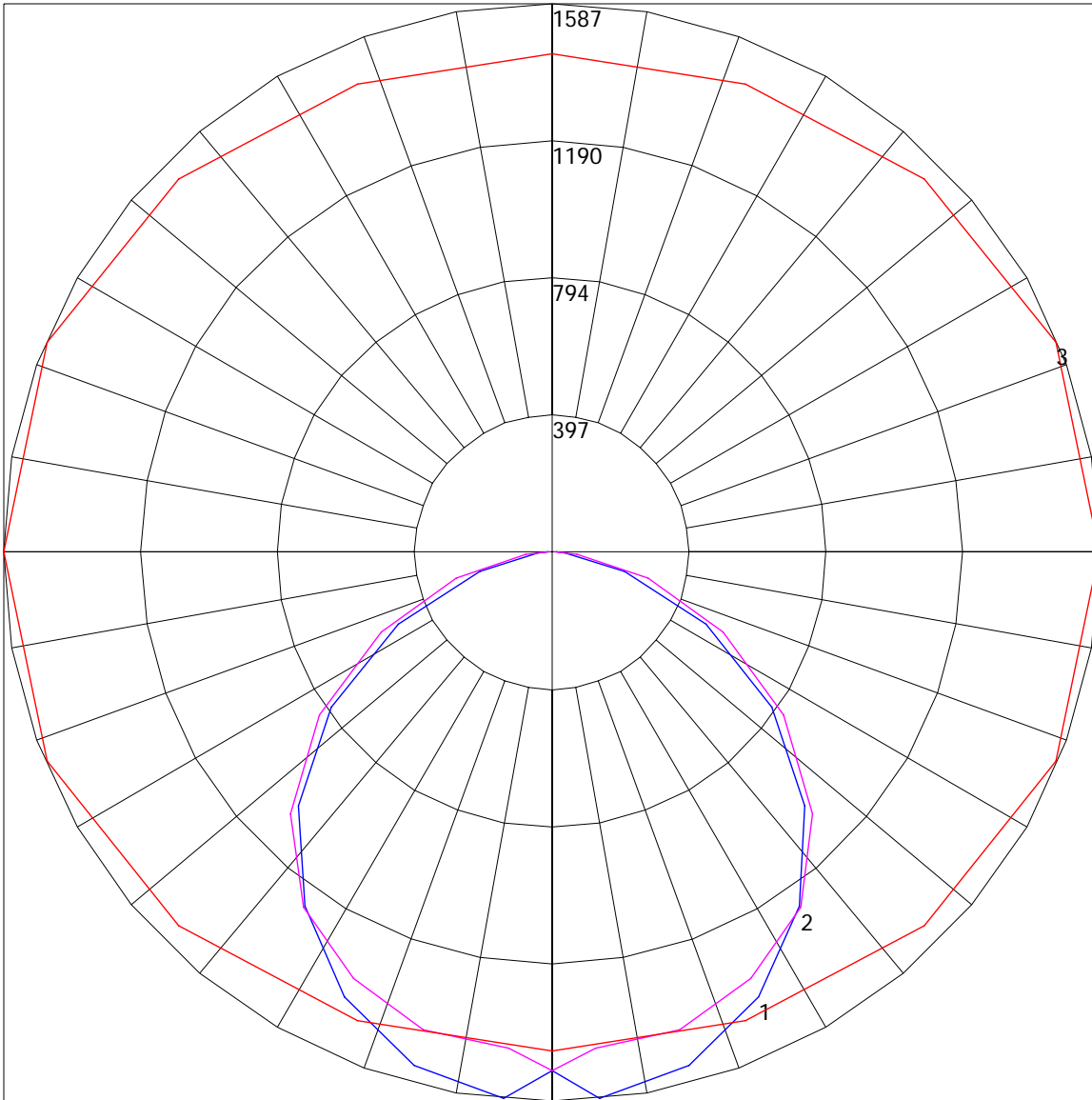
Zone	Lumens	%Lamp	%Fixt
0-30	864.94	N.A.	19.2
0-40	1591.8	N.A.	35.3
0-60	3205.47	N.A.	71.2
0-90	4504.24	N.A.	100
90-120	0	N.A.	0
90-130	0	N.A.	0
90-150	0	N.A.	0
90-180	0	N.A.	0
0-180	4504.24	N.A.	100

Total Luminaire Efficiency = N.A.%

ZONAL LUMEN SUMMARY

Zone	Lumens
0-10	36.11
10-20	286.99
20-30	541.85
30-40	726.86
40-50	818.36
50-60	795.32
60-70	655.12
70-80	430.39
80-90	213.26
90-100	0
100-110	0
110-120	0
120-130	0
130-140	0
140-150	0
150-160	0
160-170	0
170-180	0

POLAR GRAPH



Maximum Candela = 1587 Located At Horizontal Angle = 0, Vertical Angle = 5
1 - Vertical Plane Through Horizontal Angles (0 - 180) (Through Max. Cd.) : BLUE
2 - Vertical Plane Through Horizontal Angles (90 - 270) : MAGENTA
3 - Horizontal Cone Through Vertical Angle (5) (Through Max. Cd.) : RED