



**IES INDOOR REPORT  
PHOTOMETRIC FILENAME : LLI080707C.IES**

**DESCRIPTION INFORMATION (From Photometric File)**

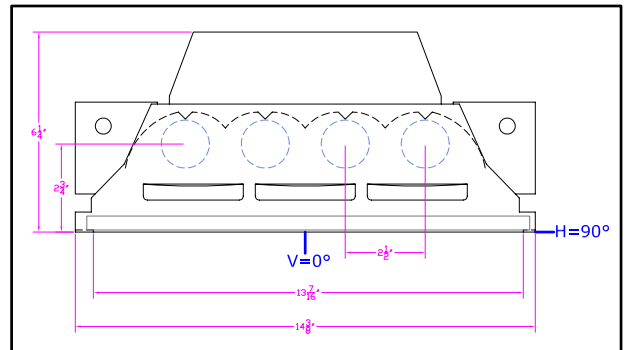
IESNA:LM-63-2002  
[TEST] LLI 0807-07C  
[TESTLAB] LIGHT LABORATORY INC  
[ISSUEDATE] 8/15/2007  
[MANUFAC] KINO FLO, INC.  
[LUMCAT] IMAGE 45 w/ SILVER LOUVER  
[LUMINAIRE] 54.5"L. X 17"W. X 6.5"H. STUDIO FIXTURE  
[MORE] SPECULAR REFLECTOR  
[MORE] SILVER SQUARE LOUVERS  
[BALLASTCAT] KINOFLO IMAGE 45 DMX  
[BALLAST] 120V 50/60Hz ELECTRONIC  
[LAMPPOSITION] 0,90  
[LAMPCAT] KINO FLO F75/T12/HO/800  
[OTHER] INDICATING THE CANDELA VALUES ARE ABSOLUTE AND  
[MORE] SHOULD NOT BE FACTORED FOR DIFFERENT LAMP RATINGS.  
[\_LAMPLUM] 3290  
[\_INPUT] 120VAC, 282.3W

**CHARACTERISTICS**

Total Rated Lamp Lumens	N.A. (absolute photometry)
Total Luminaire Efficiency	N.A.
CIE Type	Direct
Spacing Criteria (0-180)	1.20
Spacing Criteria (90-270)	1.16
Spacing Criteria (Diagonal)	1.18
Basic Luminous Shape	Rectangular
Luminous Length (0-180)	4.00 ft
Luminous Width (90-270)	1.12 ft
Luminous Height	0.00 ft

**LUMINANCE DATA (cd/sq.m)**

Angle In Degrees	Average 0-Deg	Average 45-Deg	Average 90-Deg
45	2050	2570	1826
55	33	105	188
65	28	244	443
75	37	556	872
85	110	1652	2313



IES INDOOR REPORT  
PHOTOMETRIC FILENAME : LLI080707C.IES

CANDELA TABULATION

	<u>0</u>	<u>22.5</u>	<u>45</u>	<u>67.5</u>	<u>90</u>
<b>0</b>	2014	2014	2014	2014	2014
<b>5</b>	2133	2115	2046	1969	1935
<b>15</b>	2023	2024	1996	1925	1887
<b>25</b>	1782	1799	1757	1717	1682
<b>35</b>	1443	1453	1414	1397	1405
<b>45</b>	604	699	757	685	538
<b>55</b>	8	11	25	33	45
<b>65</b>	5	5	43	66	78
<b>75</b>	4	7	60	80	94
<b>85</b>	4	12	60	77	84
<b>90</b>	4	5	6	7	7
<b>95</b>	4	11	28	26	28
<b>105</b>	5	15	38	40	41
<b>115</b>	12	20	41	45	49
<b>125</b>	9	15	40	46	51
<b>135</b>	11	15	36	43	47
<b>145</b>	13	15	26	35	38
<b>155</b>	14	16	21	25	26
<b>165</b>	14	15	16	18	19
<b>175</b>	14	13	13	13	13
<b>180</b>	12	12	12	12	12

**IES INDOOR REPORT**  
**PHOTOMETRIC FILENAME : LLI080707C.IES**

**ZONAL LUMEN SUMMARY**

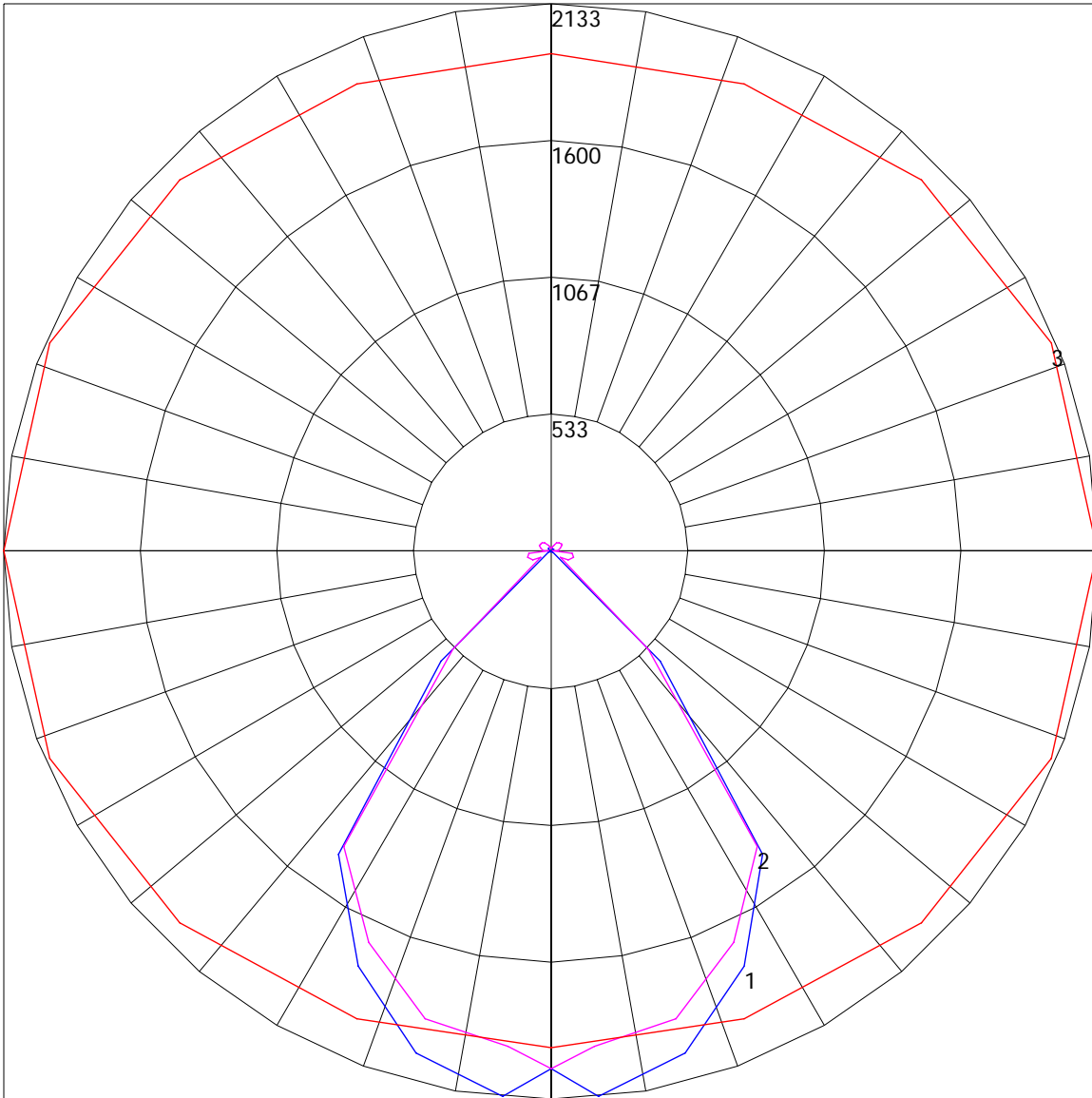
Zone	Lumens	%Lamp	%Fixt
0-30	1128.28	N.A.	33.8
0-40	1997.14	N.A.	59.8
0-60	3030.77	N.A.	90.7
0-90	3173.02	N.A.	95
90-120	66.2	N.A.	2
90-130	97.91	N.A.	2.9
90-150	144.31	N.A.	2.9
90-180	166.88	N.A.	5
0-180	3339.9	N.A.	100

Total Luminaire Efficiency = N.A.%

**ZONAL LUMEN SUMMARY**

Zone	Lumens
0-10	48.48
10-20	381.89
20-30	697.91
30-40	868.86
40-50	739.2
50-60	294.44
60-70	29.76
70-80	45.22
80-90	67.27
90-100	7.15
100-110	26.56
110-120	32.48
120-130	31.72
130-140	26.64
140-150	19.76
150-160	12.56
160-170	6.91
170-180	3.11

POLAR GRAPH



Maximum Candela = 2133 Located At Horizontal Angle = 0, Vertical Angle = 5  
# 1 - Vertical Plane Through Horizontal Angles (0 - 180) (Through Max. Cd.) : BLUE  
# 2 - Vertical Plane Through Horizontal Angles (90 - 270) : MAGENTA  
# 3 - Horizontal Cone Through Vertical Angle (5) (Through Max. Cd.) : RED