



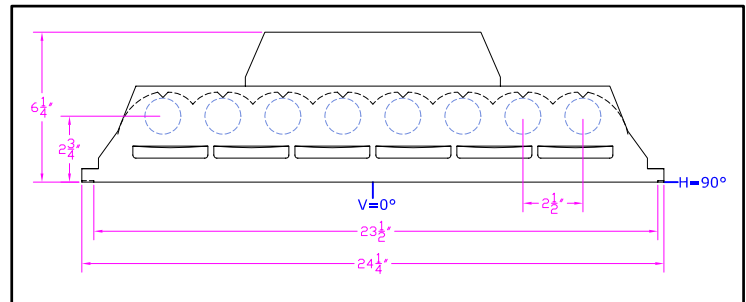
**IES INDOOR REPORT  
PHOTOMETRIC FILENAME : LLI080707D.IES**

**DESCRIPTION INFORMATION (From Photometric File)**

IESNA:LM-63-2002  
[TEST] LLI 0807-07D  
[TESTLAB] LIGHT LABORATORY INC  
[ISSUEDATE] 8/15/2007  
[MANUFAC] KINO FLO, INC.  
[LUMCAT] IMAGE 85/OPEN FACE  
[LUMINAIRE] 54"L. X 28"W. X 6.5"H. STUDIO FIXTURE  
[MORE] SPECULAR REFLECTOR  
[BALLASTCAT] KINOFLO IMAGE 85 DMX  
[BALLAST] 120V 50/60Hz ELECTRONIC  
[LAMPPOSITION] 0,90  
[LAMPCAT] KINO FLO F75/T12/HO/800  
[OTHER] INDICATING THE CANDELA VALUES ARE ABSOLUTE AND  
[MORE] SHOULD NOT BE FACTORED FOR DIFFERENT LAMP RATINGS.  
[\_LAMPLUM] 3290  
[\_INPUT] 120VAC, 565.7W

**CHARACTERISTICS**

Total Rated Lamp Lumens	N.A. (absolute photometry)
Total Luminaire Efficiency	N.A.
CIE Type	Direct
Spacing Criteria (0-180)	1.32
Spacing Criteria (90-270)	1.26
Spacing Criteria (Diagonal)	1.40
Basic Luminous Shape	Rectangular
Luminous Length (0-180)	4.00 ft
Luminous Width (90-270)	1.96 ft
Luminous Height	0.00 ft



**LUMINANCE DATA (cd/sq.m)**

Angle In Degrees	Average 0-Deg	Average 45-Deg	Average 90-Deg
45	6188	6268	6508
55	5617	6318	6469
65	4589	6043	5875
75	2915	4632	4383
85	771	1668	1684

IES INDOOR REPORT  
PHOTOMETRIC FILENAME : LLI080707D.IES

CANDELA TABULATION

	<u>0</u>	<u>22.5</u>	<u>45</u>	<u>67.5</u>	<u>90</u>
<b>0</b>	4701	4701	4701	4701	4701
<b>5</b>	4988	4920	4767	4603	4536
<b>15</b>	4830	4764	4623	4481	4421
<b>25</b>	4445	4377	4278	4162	4108
<b>35</b>	3887	3822	3736	3758	3789
<b>45</b>	3190	3148	3231	3351	3355
<b>55</b>	2349	2356	2642	2706	2705
<b>65</b>	1414	1631	1862	1856	1810
<b>75</b>	550	815	874	844	827
<b>85</b>	49	102	106	102	107
<b>90</b>	18	19	21	23	24
<b>95</b>	17	20	21	21	21
<b>105</b>	18	21	26	27	27
<b>115</b>	22	26	30	32	32
<b>125</b>	21	24	31	34	34
<b>135</b>	22	24	30	34	34
<b>145</b>	22	26	28	30	31
<b>155</b>	22	25	28	29	29
<b>165</b>	20	21	25	26	26
<b>175</b>	20	20	20	21	21
<b>180</b>	19	19	19	19	19

**IES INDOOR REPORT**  
**PHOTOMETRIC FILENAME : LLI080707D.IES**

**ZONAL LUMEN SUMMARY**

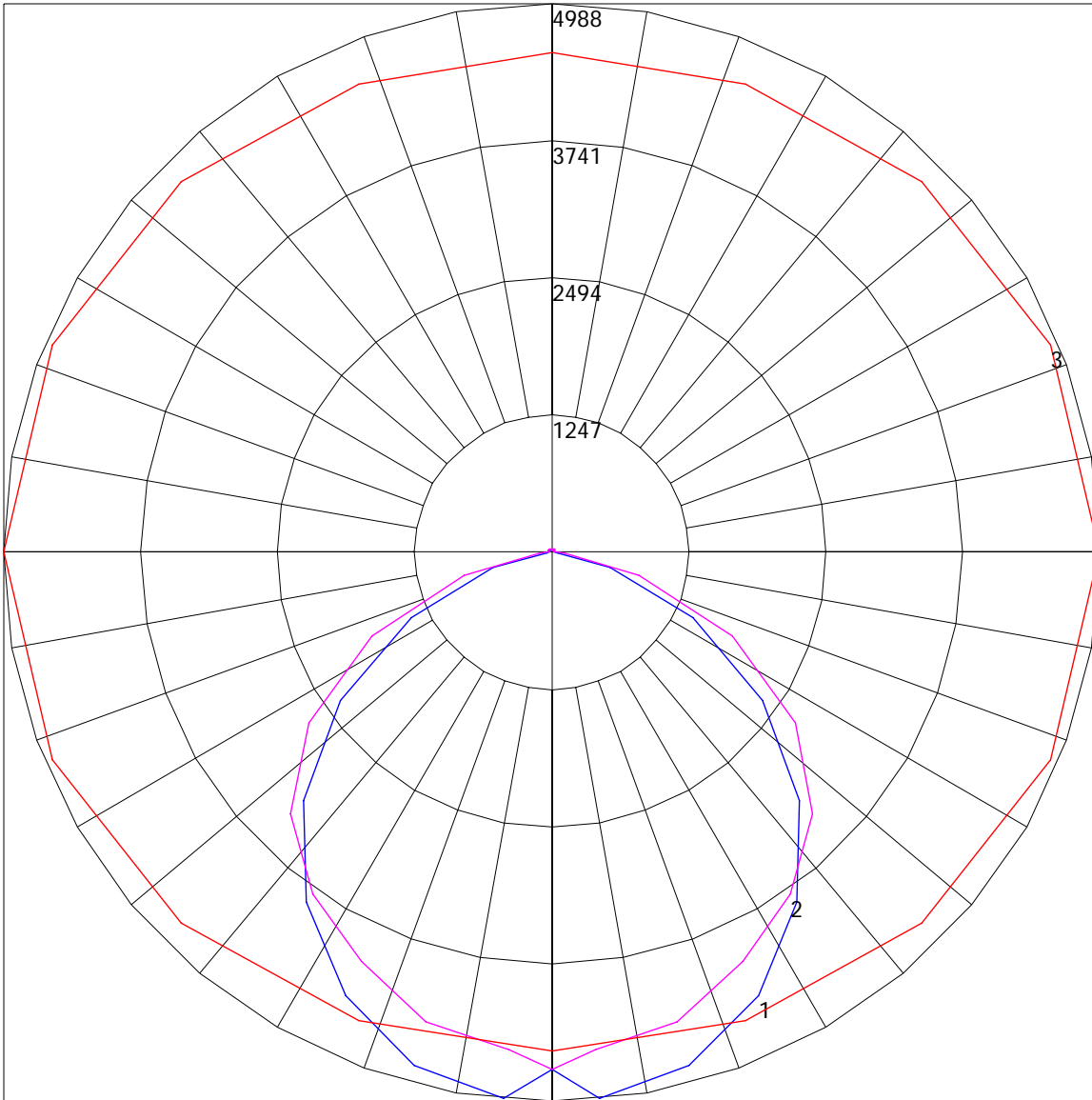
Zone	Lumens	%Lamp	%Fixt
0-30	2672.04	N.A.	19.3
0-40	4879.44	N.A.	35.3
0-60	9793.82	N.A.	70.8
0-90	13661.05	N.A.	98.8
90-120	62.43	N.A.	.5
90-130	89.88	N.A.	.7
90-150	134.2	N.A.	.7
90-180	163.27	N.A.	1.2
0-180	13824.32	N.A.	100

Total Luminaire Efficiency = N.A.%

**ZONAL LUMEN SUMMARY**

Zone	Lumens
0-10	113.14
10-20	892.57
20-30	1666.32
30-40	2207.41
40-50	2477.78
50-60	2436.6
60-70	2038.32
70-80	1309.95
80-90	518.96
90-100	11.29
100-110	23.93
110-120	27.21
120-130	27.45
130-140	24.38
140-150	19.93
150-160	14.92
160-170	9.48
170-180	4.67

POLAR GRAPH



Maximum Candela = 4988 Located At Horizontal Angle = 0, Vertical Angle = 5  
# 1 - Vertical Plane Through Horizontal Angles (0 - 180) (Through Max. Cd.) : BLUE  
# 2 - Vertical Plane Through Horizontal Angles (90 - 270) : MAGENTA  
# 3 - Horizontal Cone Through Vertical Angle (5) (Through Max. Cd.) : RED