



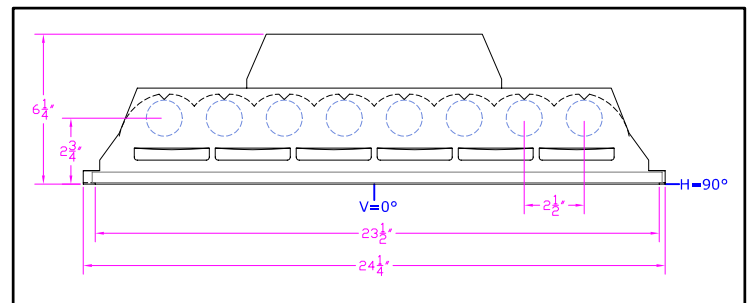
**IES INDOOR REPORT
PHOTOMETRIC FILENAME : LLI080707E.IES**

DESCRIPTION INFORMATION (From Photometric File)

IESNA:LM-63-2002
[TEST] LLI 0807-07E
[TESTLAB] LIGHT LABORATORY INC
[ISSUE DATE] 8/15/2007
[MANUFAC] KINO FLO, INC.
[LUMCAT] IMAGE 85 w/ BLACK LOUVER
[LUMINAIRE] 54"L. X 28"W. X 6.5"H. STUDIO FIXTURE
[MORE] SPECULAR REFLECTOR
[MORE] BLACK SQUARE LOUVERS
[BALLASTCAT] KINOFLO IMAGE 85 DMX
[BALLAST] 120V 50/60Hz ELECTRONIC
[LAMPPOSITION] 0,90
[LAMPCAT] KINO FLO F75/T12/HO/800
[OTHER] INDICATING THE CANDELA VALUES ARE ABSOLUTE AND
[MORE] SHOULD NOT BE FACTORED FOR DIFFERENT LAMP RATINGS.
[_LAMPLUM] 3290
[_INPUT] 120VAC, 553.3W

CHARACTERISTICS

Total Rated Lamp Lumens	N.A. (absolute photometry)
Total Luminaire Efficiency	N.A.
CIE Type	Direct
Spacing Criteria (0-180)	0.98
Spacing Criteria (90-270)	0.90
Spacing Criteria (Diagonal)	0.96
Basic Luminous Shape	Rectangular
Luminous Length (0-180)	4.00 ft
Luminous Width (90-270)	1.96 ft
Luminous Height	0.00 ft



LUMINANCE DATA (cd/sq.m)

Angle In Degrees	Average 0-Deg	Average 45-Deg	Average 90-Deg
45	1880	1682	1884
55	584	794	579
65	162	136	376
75	53	276	445
85	94	818	1149

IES INDOOR REPORT
PHOTOMETRIC FILENAME : LLI080707E.IES

CANDELA TABULATION

	<u>0</u>	<u>22.5</u>	<u>45</u>	<u>67.5</u>	<u>90</u>
0	3512	3512	3512	3512	3512
5	3646	3576	3454	3337	3287
15	3177	3078	2955	2888	2876
25	2473	2341	2234	2214	2233
35	1721	1589	1485	1551	1633
45	969	886	867	916	971
55	244	274	332	286	242
65	50	46	42	94	116
75	10	20	52	72	84
85	6	12	52	66	73
90	5	6	8	10	11
95	5	9	12	13	13
105	6	11	16	18	19
115	9	14	19	21	21
125	8	12	19	23	23
135	8	12	18	22	24
145	9	14	17	19	20
155	10	14	16	17	18
165	10	11	14	16	16
175	10	10	10	11	11
180	9	9	9	9	9

IES INDOOR REPORT
PHOTOMETRIC FILENAME : LLI080707E.IES

ZONAL LUMEN SUMMARY

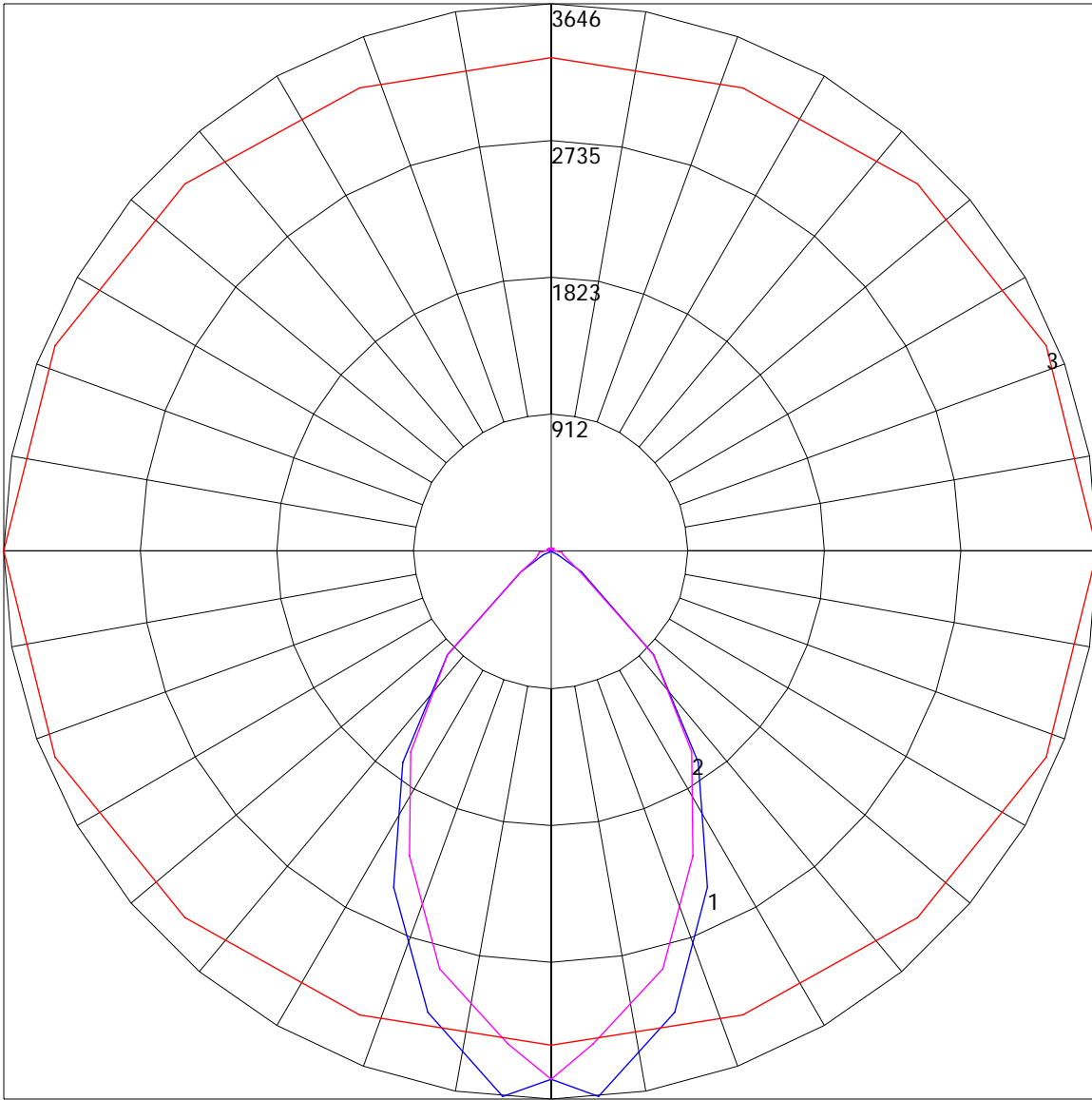
Zone	Lumens	%Lamp	%Fixt
0-30	1683.72	N.A.	37.4
0-40	2740.89	N.A.	60.9
0-60	4116.37	N.A.	91.5
0-90	4403.42	N.A.	97.9
90-120	34.96	N.A.	.8
90-130	51.38	N.A.	1.1
90-150	77.46	N.A.	1.1
90-180	93.94	N.A.	2.1
0-180	4497.35	N.A.	100

Total Luminaire Efficiency = N.A.%

ZONAL LUMEN SUMMARY

Zone	Lumens
0-10	83.33
10-20	612.89
20-30	987.49
30-40	1057.17
40-50	874.81
50-60	500.67
60-70	165.99
70-80	58.66
80-90	62.4
90-100	5.13
100-110	13.55
110-120	16.27
120-130	16.42
130-140	14.42
140-150	11.66
150-160	8.59
160-170	5.38
170-180	2.5

POLAR GRAPH



Maximum Candela = 3646 Located At Horizontal Angle = 0, Vertical Angle = 5
1 - Vertical Plane Through Horizontal Angles (0 - 180) (Through Max. Cd.) : BLUE
2 - Vertical Plane Through Horizontal Angles (90 - 270) : MAGENTA
3 - Horizontal Cone Through Vertical Angle (5) (Through Max. Cd.) : RED