



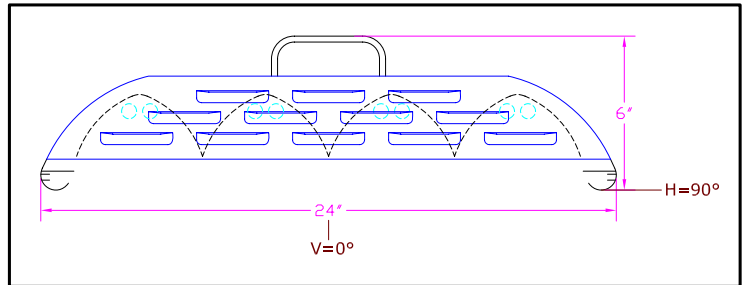
**IES INDOOR REPORT  
PHOTOMETRIC FILENAME : LLI030704F.IES**

**DESCRIPTION INFORMATION (From Photometric File)**

IESNA:LM-63-2002  
[TEST] LLI 0307-04F  
[TESTLAB] LIGHT LABORATORY INC  
[ISSUEDATE] 3/14/2007  
[MANUFAC] KINO FLO, INC.  
[LUMCAT] PARABEAM 400/OPEN FACE  
[LUMINAIRE] 24.5"L. X 24"W. X 8"H. STUDIO FIXTURE  
[MORE] SPECULAR REFLECTOR  
[BALLASTCAT] SYLVANIA QT2X54/120PHO-DIM  
[BALLAST] 120V 60Hz ELECTRONIC  
[LAMPPOSITION] 180,90  
[LAMPCAT] KINO FLO TRUE MATCH 55C-K29  
[OTHER] INDICATING THE CANDELA VALUES ARE ABSOLUTE AND  
[MORE] SHOULD NOT BE FACTORED FOR DIFFERENT LAMP RATINGS.  
[\_LAMPLUM] 2800  
[\_INPUT] 120VAC, 225.2W

**CHARACTERISTICS**

Total Rated Lamp Lumens	N.A. (absolute photometry)
Total Luminaire Efficiency	N.A.
CIE Type	Direct
Spacing Criteria (0-180)	1.20
Spacing Criteria (90-270)	0.68
Spacing Criteria (Diagonal)	0.88
Basic Luminous Shape	Rectangular
Luminous Length (0-180)	1.88 ft
Luminous Width (90-270)	1.83 ft
Luminous Height	0.00 ft



**LUMINANCE DATA (cd/sq.m)**

Angle In Degrees	Average 0-Deg	Average 45-Deg	Average 90-Deg
45	15662	6595	6220
55	14098	5700	3379
65	11767	2737	695
75	7596	217	205
85	825	538	574

IES INDOOR REPORT  
PHOTOMETRIC FILENAME : LLI030704F.IES

CANDELA TABULATION

	<u>0</u>	<u>22.5</u>	<u>45</u>	<u>67.5</u>	<u>90</u>
<b>0</b>	5944	5944	5944	5944	5944
<b>5</b>	6001	5989	5979	5970	5966
<b>15</b>	5745	5641	5000	4267	3974
<b>25</b>	5088	4652	3030	2550	2466
<b>35</b>	4376	3278	2062	1861	1841
<b>45</b>	3543	1959	1492	1439	1407
<b>55</b>	2587	1227	1046	738	620
<b>65</b>	1591	708	370	148	94
<b>75</b>	629	335	18	18	17
<b>85</b>	23	13	15	16	16
<b>90</b>	12	12	13	12	11
<b>95</b>	0	0	0	0	0
<b>105</b>	0	0	0	0	0
<b>115</b>	0	0	0	0	0
<b>125</b>	0	0	0	0	0
<b>135</b>	0	0	0	0	0
<b>145</b>	0	0	0	0	0
<b>155</b>	0	0	0	0	0
<b>165</b>	0	0	0	0	0
<b>175</b>	0	0	0	0	0
<b>180</b>	0	0	0	0	0

**IES INDOOR REPORT**  
**PHOTOMETRIC FILENAME : LLI030704F.IES**

**ZONAL LUMEN SUMMARY**

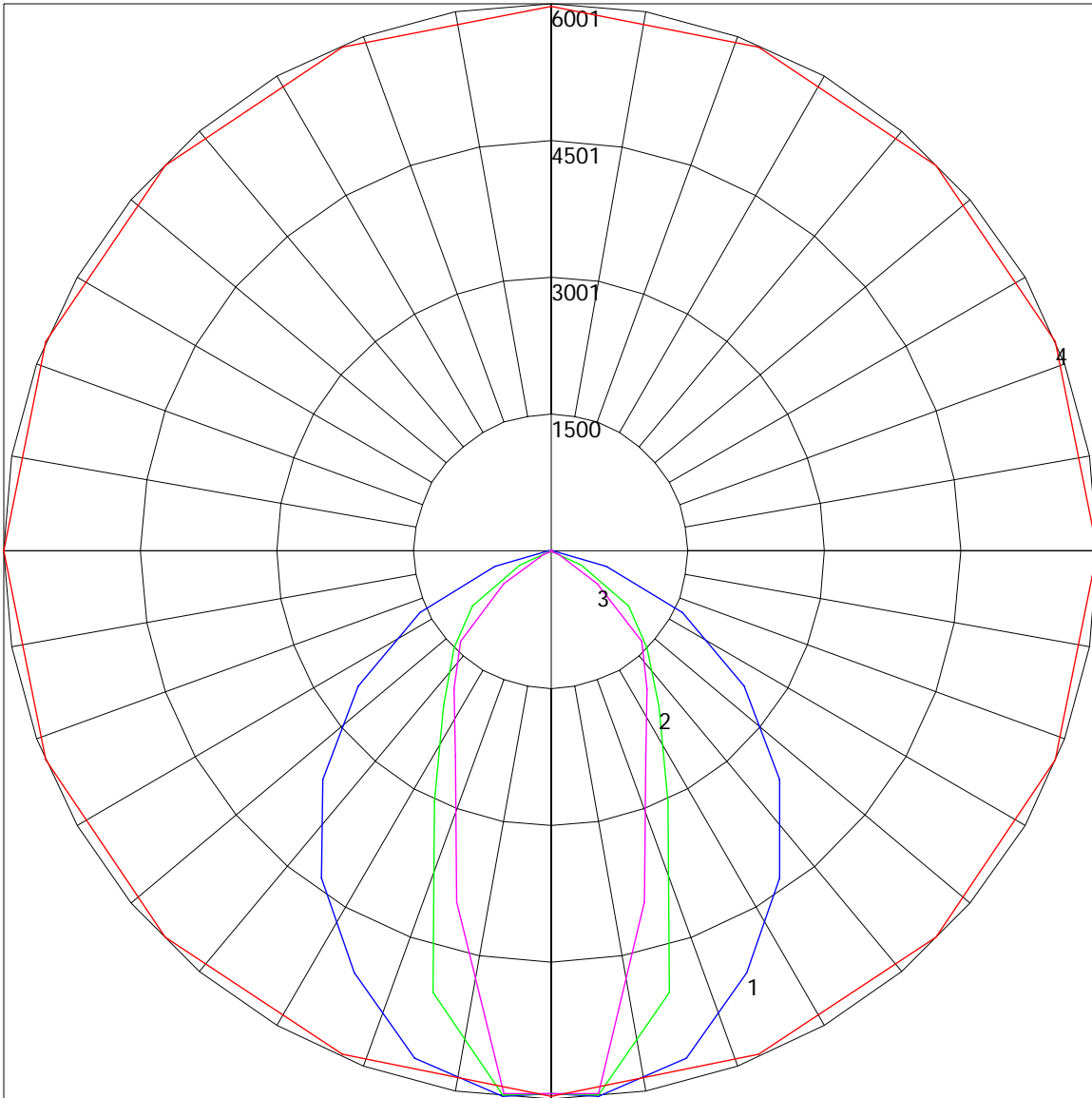
Zone	Lumens	%Lamp	%Fixt
0-30	2762.72	N.A.	32.5
0-40	4427.37	N.A.	52.1
0-60	7239.07	N.A.	85.2
0-90	8496.61	N.A.	100
90-120	3.32	N.A.	0
90-130	3.32	N.A.	0
90-150	3.32	N.A.	0
90-180	3.32	N.A.	0
0-180	8499.93	N.A.	100

Total Luminaire Efficiency = N.A.%

**ZONAL LUMEN SUMMARY**

Zone	Lumens
0-10	142.55
10-20	1038.62
20-30	1581.55
30-40	1664.65
40-50	1555.36
50-60	1256.34
60-70	792.35
70-80	355.39
80-90	109.8
90-100	3.32
100-110	0
110-120	0
120-130	0
130-140	0
140-150	0
150-160	0
160-170	0
170-180	0

POLAR GRAPH



Maximum Candela = 6001 Located At Horizontal Angle = 0, Vertical Angle = 5  
# 1 - Vertical Plane Through Horizontal Angles (0 - 180) (Through Max. Cd.) : BLUE  
# 2 - Vertical Plane Through Horizontal Angles (45 - 225) : GREEN  
# 3 - Vertical Plane Through Horizontal Angles (90 - 270) : MAGENTA  
# 4 - Horizontal Cone Through Vertical Angle (5) (Through Max. Cd.) : RED