



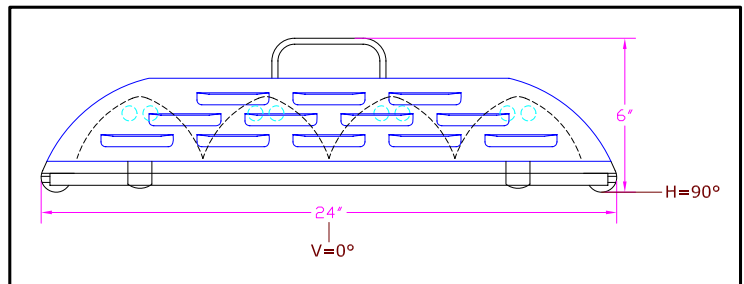
**IES INDOOR REPORT
PHOTOMETRIC FILENAME : LLI030704K.IES**

DESCRIPTION INFORMATION (From Photometric File)

IESNA:LM-63-2002
[TEST] LLI 0307-04K
[TESTLAB] LIGHT LABORATORY INC
[ISSUE DATE] 3/14/2007
[MANUFAC] KINO FLO, INC.
[LUMCAT] PARABEAM 400 w/ Honeycomb Louver 45°
[LUMINAIRE] 24.5"L. X 24"W. X 8"H. STUDIO FIXTURE
[MORE] SPECULAR REFLECTOR
[MORE] WITH 45 DEGREE SPOT HEXCEL LOUVERS
[BALLASTCAT] SYLVANIA QT2X54/120PHO-DIM
[BALLAST] 120V 60Hz ELECTRONIC
[LAMPPOSITION] 180,90
[LAMPCAT] KINO FLO TRUE MATCH 55C-K29
[OTHER] INDICATING THE CANDELA VALUES ARE ABSOLUTE AND
[MORE] SHOULD NOT BE FACTORED FOR DIFFERENT LAMP RATINGS.
[_LAMPLUM] 2800
[_INPUT] 120VAC, 220.3W

CHARACTERISTICS

Total Rated Lamp Lumens	N.A. (absolute photometry)
Total Luminaire Efficiency	N.A.
CIE Type	Direct
Spacing Criteria (0-180)	0.38
Spacing Criteria (90-270)	0.36
Spacing Criteria (Diagonal)	0.40
Basic Luminous Shape	Rectangular
Luminous Length (0-180)	1.88 ft
Luminous Width (90-270)	1.83 ft
Luminous Height	0.00 ft



LUMINANCE DATA (cd/sq.m)

Angle In Degrees	Average 0-Deg	Average 45-Deg	Average 90-Deg
45	155	75	44
55	245	54	22
65	407	59	15
75	761	24	24
85	502	72	36

IES INDOOR REPORT
PHOTOMETRIC FILENAME : LLI030704K.IES

CANDELA TABULATION

	<u>0</u>	<u>22.5</u>	<u>45</u>	<u>67.5</u>	<u>90</u>
0	4752	4752	4752	4752	4752
5	3779	3818	3879	3900	3905
15	1444	1416	1382	1272	1175
25	124	129	116	107	144
35	53	47	45	40	29
45	35	25	17	15	10
55	45	23	10	6	4
65	55	24	8	3	2
75	63	24	2	2	2
85	14	2	2	1	1
90	2	2	2	1	1
95	0	0	0	0	0
105	0	0	0	0	0
115	0	0	0	0	0
125	0	0	0	0	0
135	0	0	0	0	0
145	0	0	0	0	0
155	0	0	0	0	0
165	0	0	0	0	0
175	0	0	0	0	0
180	0	0	0	0	0

IES INDOOR REPORT
PHOTOMETRIC FILENAME : LLI030704K.IES

ZONAL LUMEN SUMMARY

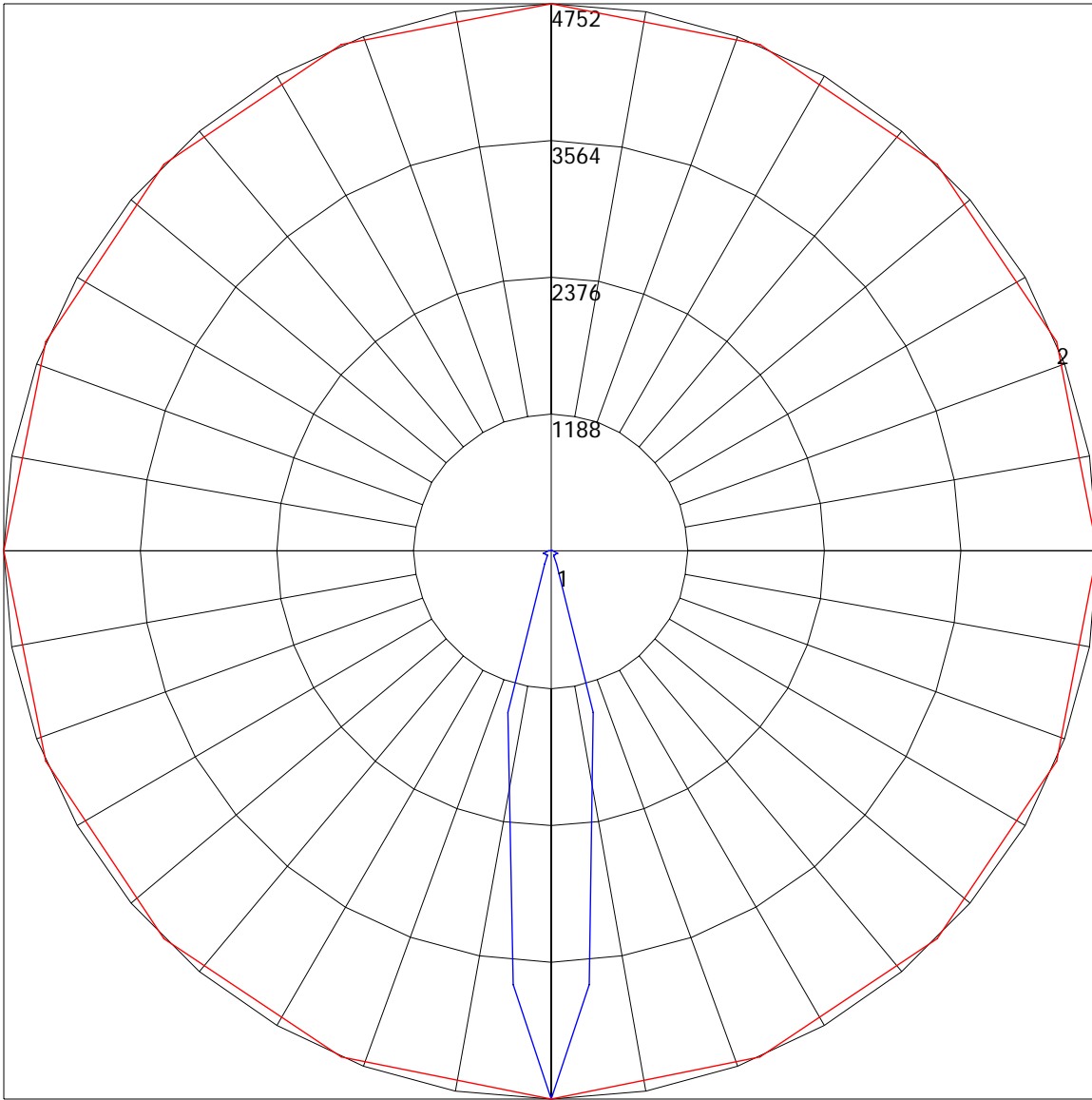
Zone	Lumens	%Lamp	%Fixt
0-30	872.52	N.A.	87.5
0-40	917.63	N.A.	92
0-60	954.84	N.A.	95.7
0-90	997	N.A.	100
90-120	.44	N.A.	0
90-130	.44	N.A.	0
90-150	.44	N.A.	0
90-180	.44	N.A.	0
0-180	997.44	N.A.	100

Total Luminaire Efficiency = N.A.%

ZONAL LUMEN SUMMARY

Zone	Lumens
0-10	102.95
10-20	494.92
20-30	274.65
30-40	45.11
40-50	22.22
50-60	15
60-70	15.06
70-80	15.95
80-90	11.14
90-100	.44
100-110	0
110-120	0
120-130	0
130-140	0
140-150	0
150-160	0
160-170	0
170-180	0

POLAR GRAPH



Maximum Candela = 4752 Located At Horizontal Angle = 0, Vertical Angle = 0
1 - Vertical Plane Through Horizontal Angles (0 - 180) (Through Max. Cd.) : BLUE
2 - Horizontal Cone Through Vertical Angle (0) (Through Max. Cd.) : RED