



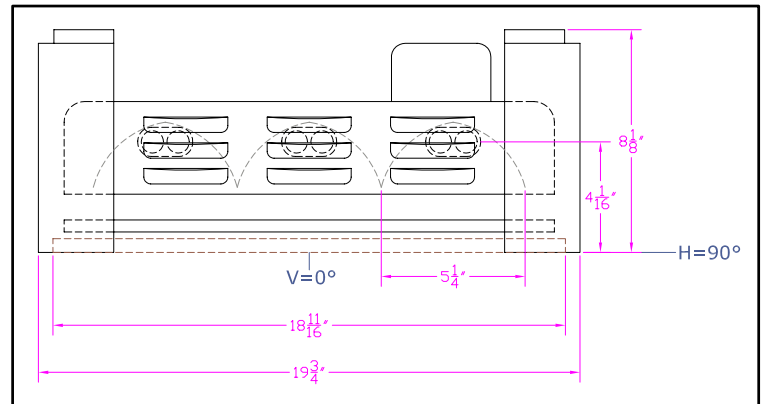
**IES INDOOR REPORT  
PHOTOMETRIC FILENAME : LLI100721G.IES**

**DESCRIPTION INFORMATION (From Photometric File)**

IESNA:LM-63-2002  
[TEST] LLI 1007-21G  
[TESTLAB] LIGHT LABORATORY INC  
[ISSUE DATE] 10/31/2007  
[MANUFAC] KINO FLO, INC.  
[LUMCAT] VISTABEAM 300 w/ Honeycomb Louver 60°  
[LUMINAIRE] 37.5"L. X 20"W. X 8.5"H. STUDIO FIXTURE  
[MORE] SPECULAR REFLECTOR  
[MORE] 60 DEGREE SPOT HEXCEL LOUVERS  
[BALLASTCAT] KINOFLO VISTABEAM 300  
[BALLAST] 120V 50/60Hz ELECTRONIC  
[LAMPPOSITION] 180,90  
[LAMPCAT] KINO FLO TRUE MATCH 964-K29  
[OTHER] INDICATING THE CANDELA VALUES ARE ABSOLUTE AND  
[MORE] SHOULD NOT BE FACTORED FOR DIFFERENT LAMP RATINGS.  
[\_LAMPLUM] 5100  
[\_INPUT] 120VAC, 270.8W

**CHARACTERISTICS**

Total Rated Lamp Lumens	N.A. (absolute photometry)
Total Luminaire Efficiency	N.A.
CIE Type	Direct
Spacing Criteria (0-180)	0.50
Spacing Criteria (90-270)	0.48
Spacing Criteria (Diagonal)	0.54
Basic Luminous Shape	Rectangular
Luminous Length (0-180)	2.98 ft
Luminous Width (90-270)	1.56 ft
Luminous Height	0.00 ft



**LUMINANCE DATA (cd/sq.m)**

Angle In Degrees	Average 0-Deg	Average 45-Deg	Average 90-Deg
45	164	147	85
55	69	69	101
65	60	153	33
75	402	45	36
85	876	106	133

IES INDOOR REPORT  
PHOTOMETRIC FILENAME : LLI100721G.IES

CANDELA TABULATION

	<u>0</u>	<u>22.5</u>	<u>45</u>	<u>67.5</u>	<u>90</u>
<b>0</b>	5452	5452	5452	5452	5452
<b>5</b>	4862	4881	4860	4785	4752
<b>15</b>	2723	2774	2806	2587	2481
<b>25</b>	883	823	712	710	719
<b>35</b>	135	136	124	106	122
<b>45</b>	50	48	45	38	26
<b>55</b>	17	16	17	21	25
<b>65</b>	11	8	28	32	6
<b>75</b>	45	80	5	5	4
<b>85</b>	33	5	4	5	5
<b>90</b>	7	5	4	5	6
<b>95</b>	0	0	0	0	0
<b>105</b>	0	0	0	0	0
<b>115</b>	0	0	0	0	0
<b>125</b>	0	0	0	0	0
<b>135</b>	0	0	0	0	0
<b>145</b>	0	0	0	0	0
<b>155</b>	0	0	0	0	0
<b>165</b>	0	0	0	0	0
<b>175</b>	0	0	0	0	0
<b>180</b>	0	0	0	0	0

**IES INDOOR REPORT**  
**PHOTOMETRIC FILENAME : LLI100721G.IES**

**ZONAL LUMEN SUMMARY**

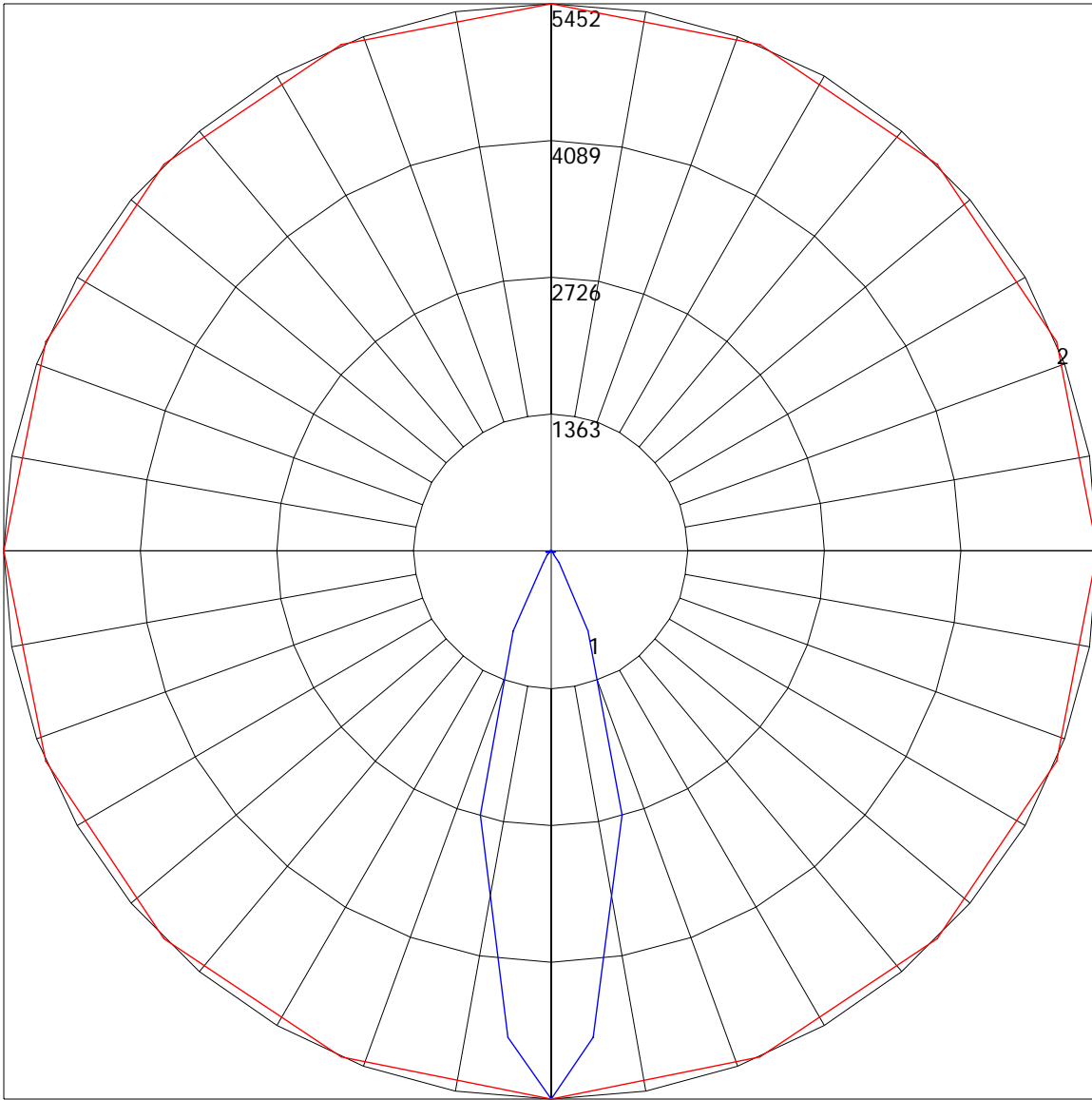
Zone	Lumens	%Lamp	%Fixt
0-30	1485.45	N.A.	79
0-40	1727.8	N.A.	91.9
0-60	1811.78	N.A.	96.4
0-90	1877.86	N.A.	99.9
90-120	1.4	N.A.	.1
90-130	1.4	N.A.	.1
90-150	1.4	N.A.	.1
90-180	1.4	N.A.	.1
0-180	1879.27	N.A.	100

Total Luminaire Efficiency = N.A.%

**ZONAL LUMEN SUMMARY**

Zone	Lumens
0-10	122.96
10-20	715.62
20-30	646.87
30-40	242.35
40-50	58.39
50-60	25.59
60-70	17.96
70-80	24.57
80-90	23.55
90-100	1.4
100-110	0
110-120	0
120-130	0
130-140	0
140-150	0
150-160	0
160-170	0
170-180	0

POLAR GRAPH



Maximum Candela = 5452 Located At Horizontal Angle = 0, Vertical Angle = 0  
# 1 - Vertical Plane Through Horizontal Angles (0 - 180) (Through Max. Cd.)  
# 2 - Horizontal Cone Through Vertical Angle (0) (Through Max. Cd.)