



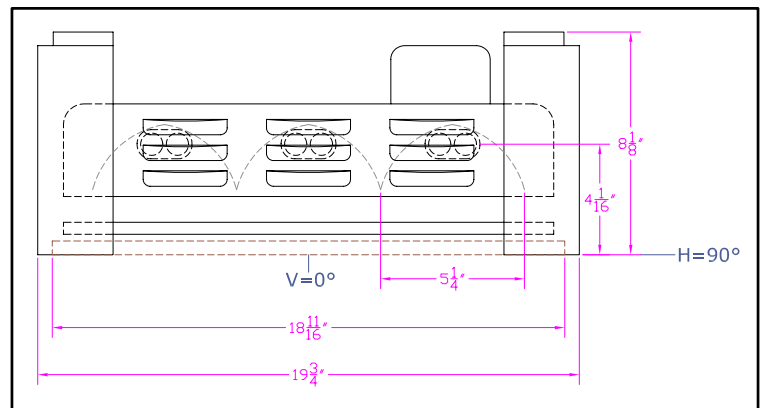
**IES INDOOR REPORT  
PHOTOMETRIC FILENAME : LLI100721F.IES**

**DESCRIPTION INFORMATION (From Photometric File)**

IESNA:LM-63-2002  
 [TEST] LLI 1007-21F  
 [TESTLAB] LIGHT LABORATORY INC  
 [ISSUE DATE] 10/31/2007  
 [MANUFAC] KINO FLO, INC.  
 [LUMCAT] VISTABEAM 300 w/ Honeycomb Louver 90°  
 [LUMINAIRE] 37.5"L. X 20"W. X 8.5"H. STUDIO FIXTURE  
 [MORE] SPECULAR REFLECTOR  
 [MORE] 90 DEGREE SPOT HEXCEL LOUVERS  
 [BALLASTCAT] KINOFLO VISTABEAM 300  
 [BALLAST] 120V 50/60Hz ELECTRONIC  
 [LAMPPOSITION] 180,90  
 [LAMPCAT] KINO FLO TRUE MATCH 964-K29  
 [OTHER] INDICATING THE CANDELA VALUES ARE ABSOLUTE AND  
 [MORE] SHOULD NOT BE FACTORED FOR DIFFERENT LAMP RATINGS.  
 [\_LAMPLUM] 5100  
 [\_INPUT] 120VAC, 270.8W

**CHARACTERISTICS**

Total Rated Lamp Lumens	N.A. (absolute photometry)
Total Luminaire Efficiency	N.A.
CIE Type	Direct
Spacing Criteria (0-180)	0.62
Spacing Criteria (90-270)	0.62
Spacing Criteria (Diagonal)	0.66
Basic Luminous Shape	Rectangular
Luminous Length (0-180)	2.98 ft
Luminous Width (90-270)	1.56 ft
Luminous Height	0.00 ft



**LUMINANCE DATA (cd/sq.m)**

Angle In Degrees	Average 0-Deg	Average 45-Deg	Average 90-Deg
45	370	383	909
55	186	165	181
65	115	219	49
75	429	72	54
85	929	159	159

IES INDOOR REPORT  
PHOTOMETRIC FILENAME : LLI100721F.IES

CANDELA TABULATION

	<u>0</u>	<u>22.5</u>	<u>45</u>	<u>67.5</u>	<u>90</u>
<b>0</b>	5542	5542	5542	5542	5542
<b>5</b>	5155	5192	5223	5219	5212
<b>15</b>	3491	3607	3816	3647	3533
<b>25</b>	1933	2034	1840	1780	1760
<b>35</b>	737	708	694	871	885
<b>45</b>	113	112	117	224	278
<b>55</b>	46	44	41	37	45
<b>65</b>	21	18	40	43	9
<b>75</b>	48	82	8	7	6
<b>85</b>	35	6	6	6	6
<b>90</b>	9	6	5	6	7
<b>95</b>	0	0	0	0	0
<b>105</b>	0	0	0	0	0
<b>115</b>	0	0	0	0	0
<b>125</b>	0	0	0	0	0
<b>135</b>	0	0	0	0	0
<b>145</b>	0	0	0	0	0
<b>155</b>	0	0	0	0	0
<b>165</b>	0	0	0	0	0
<b>175</b>	0	0	0	0	0
<b>180</b>	0	0	0	0	0

**IES INDOOR REPORT**  
**PHOTOMETRIC FILENAME : LLI100721F.IES**

**ZONAL LUMEN SUMMARY**

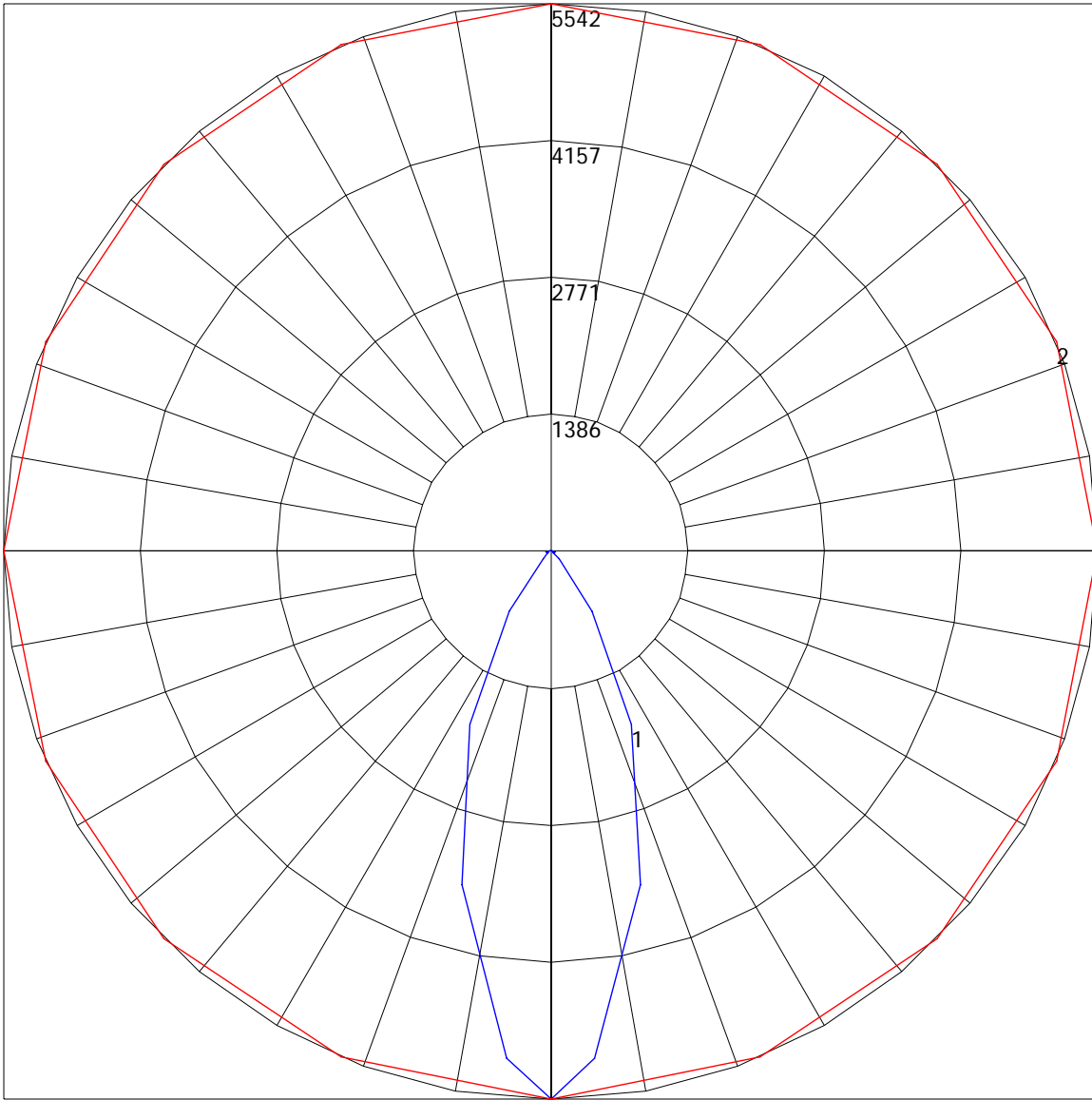
Zone	Lumens	%Lamp	%Fixt
0-30	2004.02	N.A.	61.9
0-40	2728.54	N.A.	84.3
0-60	3142.58	N.A.	97.1
0-90	3233.33	N.A.	99.9
90-120	1.71	N.A.	.1
90-130	1.71	N.A.	.1
90-150	1.71	N.A.	.1
90-180	1.71	N.A.	.1
0-180	3235.04	N.A.	100

Total Luminaire Efficiency = N.A.%

**ZONAL LUMEN SUMMARY**

Zone	Lumens
0-10	128.47
10-20	841.56
20-30	1033.99
30-40	724.53
40-50	328.46
50-60	85.58
60-70	33.61
70-80	30.88
80-90	26.26
90-100	1.71
100-110	0
110-120	0
120-130	0
130-140	0
140-150	0
150-160	0
160-170	0
170-180	0

POLAR GRAPH



Maximum Candela = 5542 Located At Horizontal Angle = 0, Vertical Angle = 0  
# 1 - Vertical Plane Through Horizontal Angles (0 - 180) (Through Max. Cd.)  
# 2 - Horizontal Cone Through Vertical Angle (0) (Through Max. Cd.)