



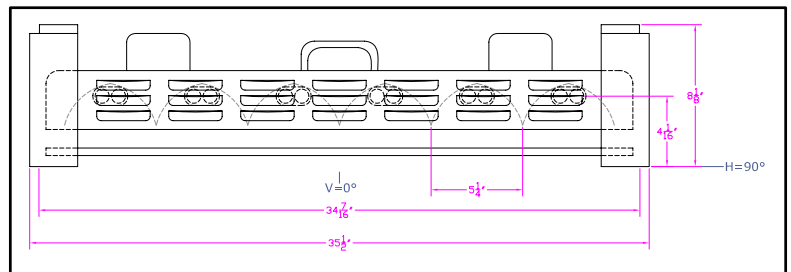
**IES INDOOR REPORT
PHOTOMETRIC FILENAME : LLI100721H.IES**

DESCRIPTION INFORMATION (From Photometric File)

IESNA:LM-63-2002
[TEST] LLI 1007-21H
[TESTLAB] LIGHT LABORATORY INC
[ISSUE DATE] 11/01/2007
[MANUFAC] KINO FLO, INC.
[LUMCAT] VISTABEAM 600/OPEN FACE
[LUMINAIRE] 37.5"L. X 36"W. X 8.5"H. STUDIO FIXTURE
[MORE] SPECULAR REFLECTOR
[BALLASTCAT] KINOFLO VISTABEAM 600
[BALLAST] 120V 50/60Hz ELECTRONIC
[LAMPPOSITION] 180,90
[LAMPCAT] KINO FLO TRUE MATCH 964-K29
[OTHER] INDICATING THE CANDELA VALUES ARE ABSOLUTE AND
[MORE] SHOULD NOT BE FACTORED FOR DIFFERENT LAMP RATINGS.
[_LAMPLUM] 5100
[_INPUT] 120VAC, 555.1W

CHARACTERISTICS

Total Rated Lamp Lumens	N.A. (absolute photometry)
Total Luminaire Efficiency	N.A.
CIE Type	Direct
Spacing Criteria (0-180)	1.28
Spacing Criteria (90-270)	0.80
Spacing Criteria (Diagonal)	1.00
Basic Luminous Shape	Rectangular
Luminous Length (0-180)	2.98 ft
Luminous Width (90-270)	2.87 ft
Luminous Height	0.00 ft



LUMINANCE DATA (cd/sq.m)

Angle In Degrees	Average 0-Deg	Average 45-Deg	Average 90-Deg
45	13886	7134	5909
55	12732	5575	3689
65	10857	3121	1386
75	7686	301	219
85	2121	534	591

**IES INDOOR REPORT
 PHOTOMETRIC FILENAME : LLI100721H.IES**

CANDELA TABULATION

	<u>0</u>	<u>22.5</u>	<u>45</u>	<u>67.5</u>	<u>90</u>
0	11779	11779	11779	11779	11779
5	11944	11948	11904	11919	11930
15	11529	11500	10817	9811	9456
25	10692	10245	7624	6336	6125
35	9451	7913	5328	4942	4778
45	7809	5270	4012	3585	3323
55	5808	3275	2543	1895	1683
65	3649	1861	1049	682	466
75	1582	571	62	44	45
85	147	37	37	39	41
90	32	28	25	25	26
95	0	0	0	0	0
105	0	0	0	0	0
115	0	0	0	0	0
125	0	0	0	0	0
135	0	0	0	0	0
145	0	0	0	0	0
155	0	0	0	0	0
165	0	0	0	0	0
175	0	0	0	0	0
180	0	0	0	0	0

IES INDOOR REPORT
PHOTOMETRIC FILENAME : LLI100721H.IES

ZONAL LUMEN SUMMARY

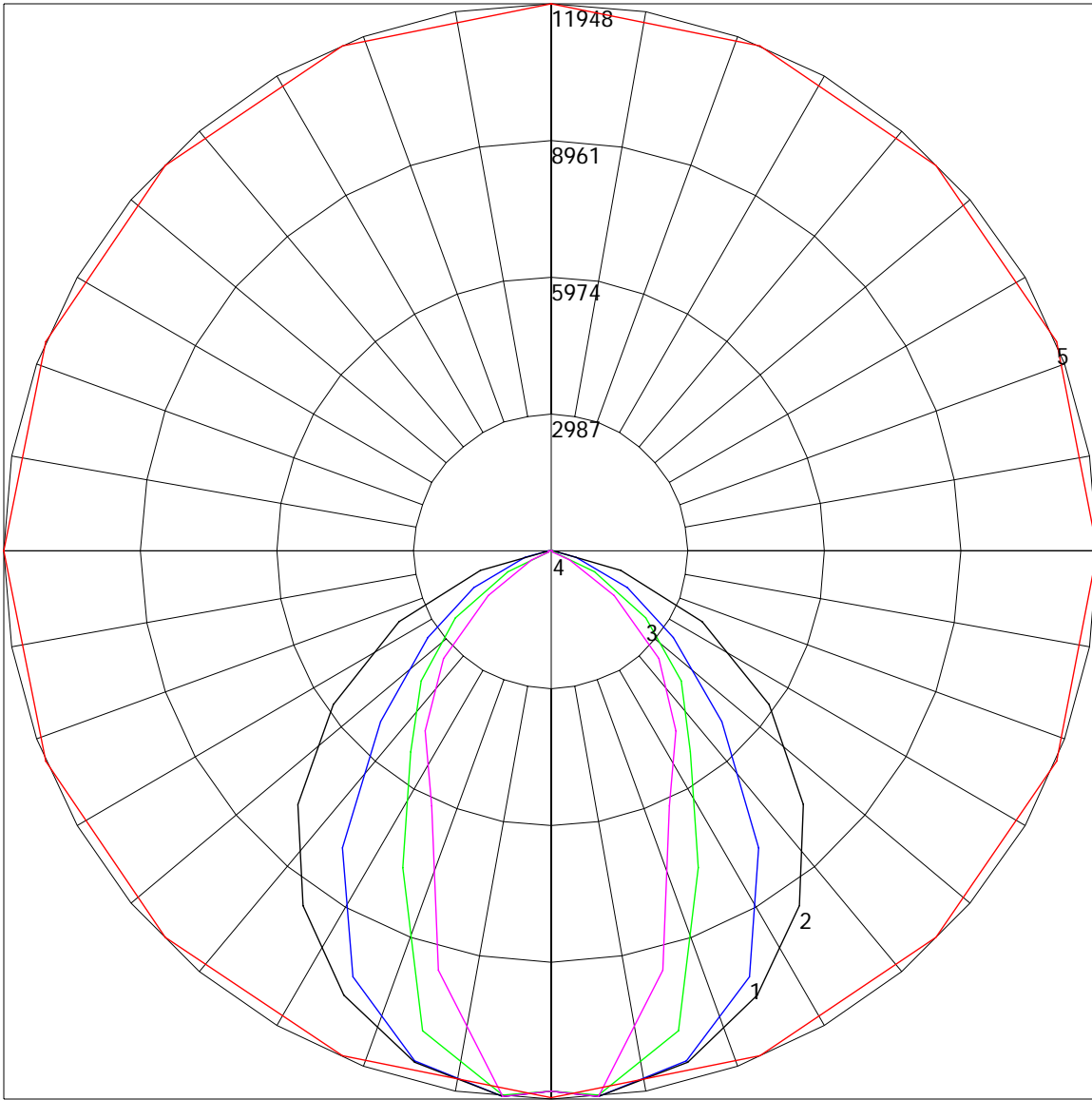
Zone	Lumens	%Lamp	%Fixt
0-30	5953.54	N.A.	29.6
0-40	9917.66	N.A.	49.3
0-60	16900.81	N.A.	84.1
0-90	20098.07	N.A.	100
90-120	7.32	N.A.	0
90-130	7.32	N.A.	0
90-150	7.32	N.A.	0
90-180	7.32	N.A.	0
0-180	20105.39	N.A.	100

Total Luminaire Efficiency = N.A.%

ZONAL LUMEN SUMMARY

Zone	Lumens
0-10	283.4
10-20	2147.39
20-30	3522.75
30-40	3964.12
40-50	3848.29
50-60	3134.86
60-70	2028.36
70-80	918.54
80-90	250.36
90-100	7.32
100-110	0
110-120	0
120-130	0
130-140	0
140-150	0
150-160	0
160-170	0
170-180	0

POLAR GRAPH



Maximum Candela = 11948 Located At Horizontal Angle = 22.5, Vertical Angle = 5
1 - Vertical Plane Through Horizontal Angles (22.5 - 202.5) (Through Max. Cd.) : BLUE
2 - Vertical Plane Through Horizontal Angles (0 - 180) : BLACK
3 - Vertical Plane Through Horizontal Angles (45 - 225) : GREEN
4 - Vertical Plane Through Horizontal Angles (90 - 270) : MAGENTA
5 - Horizontal Cone Through Vertical Angle (5) (Through Max. Cd.) : RED