



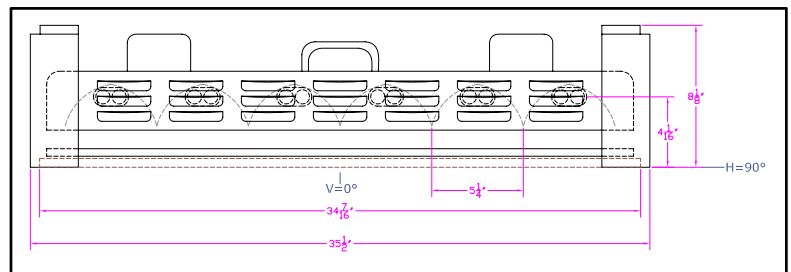
**IES INDOOR REPORT
PHOTOMETRIC FILENAME : LLI100721K.IES**

DESCRIPTION INFORMATION (From Photometric File)

IESNA:LM-63-2002
[TEST] LLI 1007-21K
[TESTLAB] LIGHT LABORATORY INC
[ISSUEDATE] 11/01/2007
[MANUFAC] KINO FLO, INC.
[LUMCAT] VISTABEAM 600 w/ Honeycomb Louver 60°
[LUMINAIRE] 37.5"L. X 36"W. X 8.5"H. STUDIO FIXTURE
[MORE] SPECULAR REFLECTOR
[MORE] 60 DEGREE SPOT HEXCEL LOUVERS
[BALLASTCAT] KINOFLO VISTABEAM 600
[BALLAST] 120V 50/60Hz ELECTRONIC
[LAMPPOSITION] 180,90
[LAMPCAT] KINO FLO TRUE MATCH 964-K29
[OTHER] INDICATING THE CANDELA VALUES ARE ABSOLUTE AND
[MORE] SHOULD NOT BE FACTORED FOR DIFFERENT LAMP RATINGS.
[_LAMPLUM] 5100
[_INPUT] 120VAC, 547.8W

CHARACTERISTICS

Total Rated Lamp Lumens	N.A. (absolute photometry)
Total Luminaire Efficiency	N.A.
CIE Type	Direct
Spacing Criteria (0-180)	0.54
Spacing Criteria (90-270)	0.48
Spacing Criteria (Diagonal)	0.54
Basic Luminous Shape	Rectangular
Luminous Length (0-180)	2.98 ft
Luminous Width (90-270)	2.87 ft
Luminous Height	0.00 ft



LUMINANCE DATA (cd/sq.m)

Angle In Degrees	Average 0-Deg	Average 45-Deg	Average 90-Deg
45	176	164	124
55	75	70	70
65	86	83	51
75	627	49	34
85	1154	101	115

IES INDOOR REPORT
PHOTOMETRIC FILENAME : LLI100721K.IES

CANDELA TABULATION

	<u>0</u>	<u>22.5</u>	<u>45</u>	<u>67.5</u>	<u>90</u>
0	10084	10084	10084	10084	10084
5	9149	9157	9140	9148	9138
15	5413	5460	5248	4806	4649
25	1966	1787	1466	1342	1324
35	268	280	250	234	274
45	99	92	92	85	70
55	34	30	32	31	32
65	29	15	28	50	17
75	129	43	10	8	7
85	80	9	7	7	8
90	13	8	6	6	6
95	0	0	0	0	0
105	0	0	0	0	0
115	0	0	0	0	0
125	0	0	0	0	0
135	0	0	0	0	0
145	0	0	0	0	0
155	0	0	0	0	0
165	0	0	0	0	0
175	0	0	0	0	0
180	0	0	0	0	0

IES INDOOR REPORT
PHOTOMETRIC FILENAME : LLI100721K.IES

ZONAL LUMEN SUMMARY

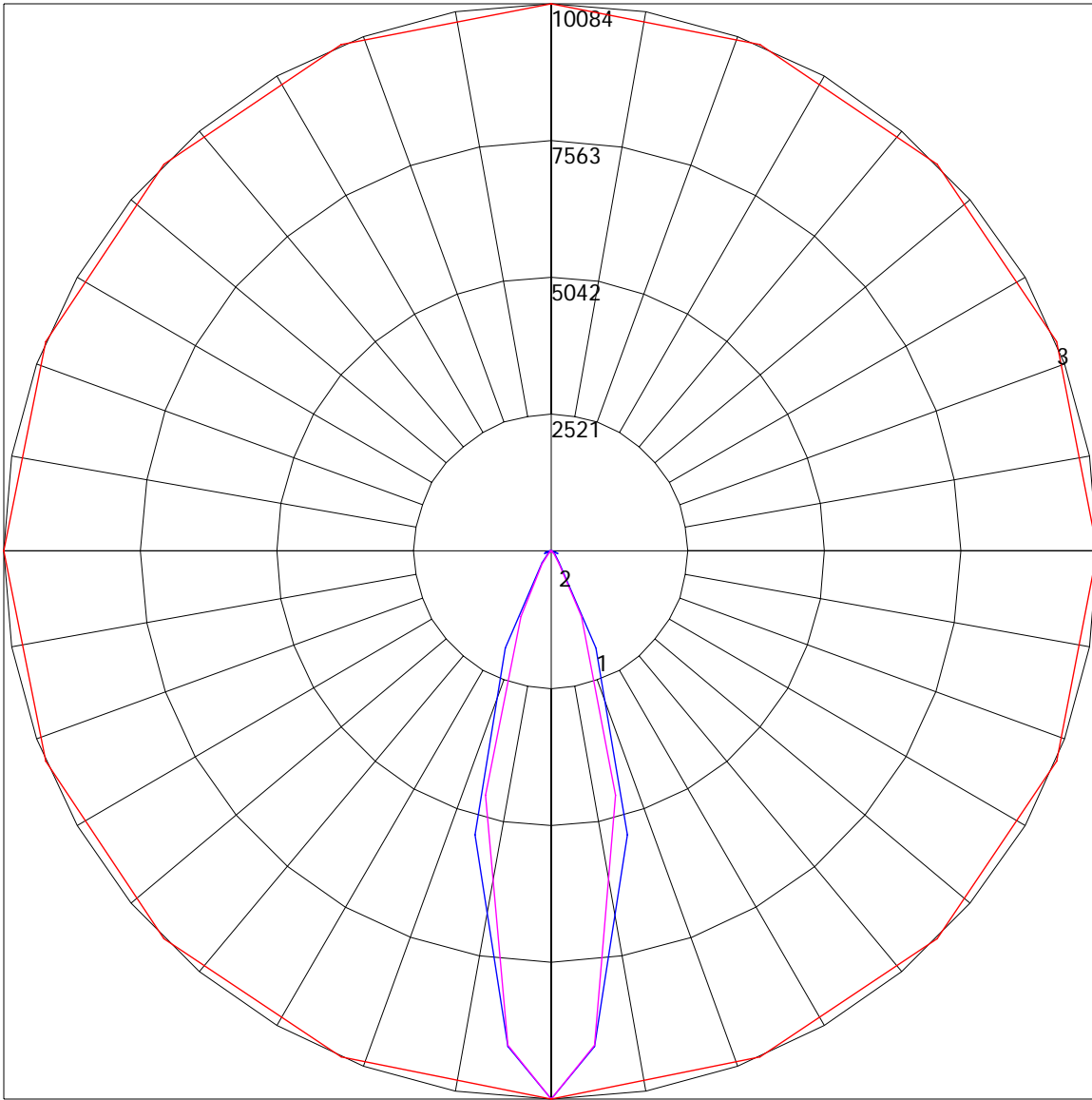
Zone	Lumens	%Lamp	%Fixt
0-30	2842.32	N.A.	78.8
0-40	3340.31	N.A.	92.6
0-60	3512.79	N.A.	97.4
0-90	3606.03	N.A.	99.9
90-120	2.02	N.A.	.1
90-130	2.02	N.A.	.1
90-150	2.02	N.A.	.1
90-180	2.02	N.A.	.1
0-180	3608.05	N.A.	100

Total Luminaire Efficiency = N.A.%

ZONAL LUMEN SUMMARY

Zone	Lumens
0-10	229.9
10-20	1358.24
20-30	1254.18
30-40	497.99
40-50	122.19
50-60	50.29
60-70	28.69
70-80	31.52
80-90	33.03
90-100	2.02
100-110	0
110-120	0
120-130	0
130-140	0
140-150	0
150-160	0
160-170	0
170-180	0

POLAR GRAPH



Maximum Candela = 10084 Located At Horizontal Angle = 0, Vertical Angle = 0
1 - Vertical Plane Through Horizontal Angles (0 - 180) (Through Max. Cd.) : BLUE
2 - Vertical Plane Through Horizontal Angles (90 - 270) : MAGENTA
3 - Horizontal Cone Through Vertical Angle (0) (Through Max. Cd.) : RED