



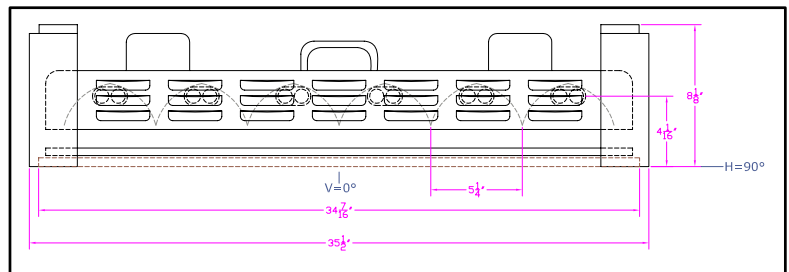
**IES INDOOR REPORT
PHOTOMETRIC FILENAME : LLI100721J.IES**

DESCRIPTION INFORMATION (From Photometric File)

IESNA:LM-63-2002
[TEST] LLI 1007-21J
[TESTLAB] LIGHT LABORATORY INC
[ISSUEDATE] 11/01/2007
[MANUFAC] KINO FLO, INC.
[LUMCAT] VISTABEAM 600 w/ Honeycomb Louver 90°
[LUMINAIRE] 37.5"L. X 36"W. X 8.5"H. STUDIO FIXTURE
[MORE] SPECULAR REFLECTOR
[MORE] 90 DEGREE SPOT HEXCEL LOUVERS
[BALLASTCAT] KINOFLO VISTABEAM 600
[BALLAST] 120V 50/60Hz ELECTRONIC
[LAMPPOSITION] 180,90
[LAMPCAT] KINO FLO TRUE MATCH 964-K29
[OTHER] INDICATING THE CANDELA VALUES ARE ABSOLUTE AND
[MORE] SHOULD NOT BE FACTORED FOR DIFFERENT LAMP RATINGS.
[_LAMPLUM] 5100
[_INPUT] 120VAC, 549.8W

CHARACTERISTICS

Total Rated Lamp Lumens	N.A. (absolute photometry)
Total Luminaire Efficiency	N.A.
CIE Type	Direct
Spacing Criteria (0-180)	0.64
Spacing Criteria (90-270)	0.58
Spacing Criteria (Diagonal)	0.64
Basic Luminous Shape	Rectangular
Luminous Length (0-180)	2.98 ft
Luminous Width (90-270)	2.87 ft
Luminous Height	0.00 ft



LUMINANCE DATA (cd/sq.m)

Angle In Degrees	Average 0-Deg	Average 45-Deg	Average 90-Deg
45	302	276	363
55	156	142	129
65	113	104	74
75	641	73	53
85	1212	144	159

IES INDOOR REPORT
PHOTOMETRIC FILENAME : LLI100721J.IES

CANDELA TABULATION

	<u>0</u>	<u>22.5</u>	<u>45</u>	<u>67.5</u>	<u>90</u>
0	10499	10499	10499	10499	10499
5	9841	9870	9883	9938	9948
15	6881	7027	6848	6300	6172
25	3914	3848	3152	2745	2681
35	1429	1199	936	1044	1019
45	170	172	155	148	204
55	71	68	65	59	59
65	38	29	35	64	25
75	132	48	15	13	11
85	84	11	10	10	11
90	15	10	8	8	9
95	0	0	0	0	0
105	0	0	0	0	0
115	0	0	0	0	0
125	0	0	0	0	0
135	0	0	0	0	0
145	0	0	0	0	0
155	0	0	0	0	0
165	0	0	0	0	0
175	0	0	0	0	0
180	0	0	0	0	0

IES INDOOR REPORT
PHOTOMETRIC FILENAME : LLI100721J.IES

ZONAL LUMEN SUMMARY

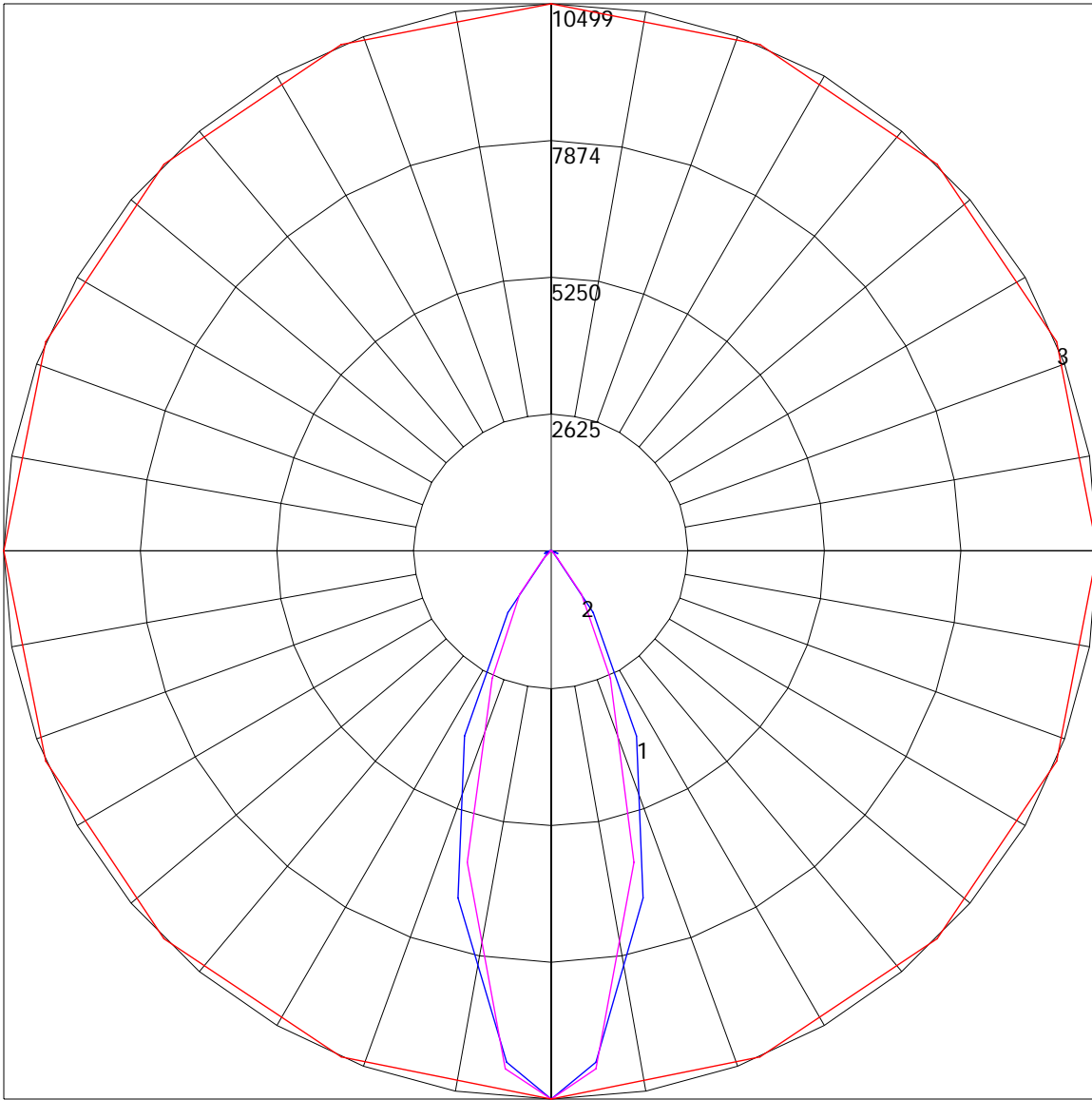
Zone	Lumens	%Lamp	%Fixt
0-30	3680.64	N.A.	66.4
0-40	4874.82	N.A.	87.9
0-60	5416.92	N.A.	97.7
0-90	5544.24	N.A.	100
90-120	2.6	N.A.	0
90-130	2.6	N.A.	0
90-150	2.6	N.A.	0
90-180	2.6	N.A.	0
0-180	5546.84	N.A.	100

Total Luminaire Efficiency = N.A.%

ZONAL LUMEN SUMMARY

Zone	Lumens
0-10	243.82
10-20	1575.85
20-30	1860.97
30-40	1194.18
40-50	445.72
50-60	96.38
60-70	49.38
70-80	39.49
80-90	38.44
90-100	2.6
100-110	0
110-120	0
120-130	0
130-140	0
140-150	0
150-160	0
160-170	0
170-180	0

POLAR GRAPH



Maximum Candela = 10499 Located At Horizontal Angle = 0, Vertical Angle = 0
1 - Vertical Plane Through Horizontal Angles (0 - 180) (Through Max. Cd.) : BLUE
2 - Vertical Plane Through Horizontal Angles (90 - 270) : MAGENTA
3 - Horizontal Cone Through Vertical Angle (0) (Through Max. Cd.) : RED