

# BarFly® 200/100



The BarFly 200 and 100 lighting systems feature a thin fixture profile and a bright, even soft light ideal for key lights, fill sources and set practicals. The new True Match® 55 Watt QFL lamp lives in a narrow 2" deep aluminum fixture with built-in head extension and removable "twist-on" center mounting plate. The BarFly 200 is brighter than a 500 Watt tungsten softlight, while drawing only 2 amps of power on 120VAC.

Features include:

- Narrow profile
- Built-in white reflector
- Built-in head extension
- Removable Gel Frame and Louver
- Center and Edge Mount options
- Individual lamp control
- HO/Standard switching
- Flicker-free remote operation
- True Match® daylight and tungsten balanced lamps

## ▼ BarFly 200 Kits



**KIT-B22-G120**  
BarFly 200 Kit, 120VAC (2-Unit)

**KIT-B22-G230**  
BarFly 200 Kit, 230VAC (2-Unit)

Contents	Dimensions
2 BarFly 200 Fixture	31 x 19.5 x 10.5"
2 BarFly 200 Ballast	(77.5 x 49 x 26.5cm)
2 Mount	<b>Weight</b>
2 BarFly Louver 90°	43 lb (19.4kg)
2 BarFly Louver 60°	
2 BarFly Louver/ Gel Bag	
1 Lamp Case	
1 Ship Case	



**KIT-B200-G120**  
BarFly 200 Kit, 120VAC (1-Unit) w/ Soft Case

**KIT-B200-G230**  
BarFly 200 Kit, 230VAC (1-Unit) w/ Soft Case

Contents	Dimensions
1 BarFly 200 Fixture	20.5 x 9.5 x 13.5"
1 BarFly 200 Ballast	(52 x 24.1 x 34.3cm)
1 Mount	<b>Weight</b>
1 BarFly Louver 90°	16.6 lb (7.5kg)
1 BarFly Louver 60°	
1 BarFly Louver/ Gel Bag	
1 Soft Case	

## ▼ BarFly 100 Kits



**KIT-B12-G120**  
BarFly 100 Kit, 120VAC (2-Unit)

**KIT-B12-G230**  
BarFly 100 Kit, 230VAC (2-Unit)

Contents	Dimensions
2 BarFly 100 Fixture	27.5 x 19.5 x 10.5"
2 BarFly 100 Ballast	(69 x 49 x 26.5cm)
2 Mount	<b>Weight</b>
2 BarFly Louver 90°	35 lb (15.8kg)
2 BarFly Louver 60°	
2 BarFly Louver/ Gel Bag	
1 Lamp Case	
1 Ship Case	



**KIT-B100-G120**  
BarFly 100 Kit, 120VAC (1-Unit) w/ Soft Case

**KIT-B100-G230**  
BarFly 100 Kit, 230VAC (1-Unit) w/ Soft Case

Contents	Dimensions
1 BarFly 100 Fixture	20.5 x 9.5 x 13.5"
1 BarFly 100 Ballast	(52 x 24.1 x 34.3cm)
1 Mount	<b>Weight</b>
1 BarFly Louver 90°	12.8 lb (5.8kg)
1 BarFly Louver 60°	
1 BarFly Louver/ Gel Bag	
1 Soft Case	

▼ Photometrics

<b>BarFly 200</b>	FC	344	96	43	25	16	11
	Feet	2	4	6	8	10	12

<b>BarFly 100</b>	FC	178	46	21	12	8	5
	Feet	2	4	6	8	10	12

<b>BarFly 200</b>	LUX	5297	1496	678	383	250	174
	Meters	0.5	1	1.5	2	2.5	3

<b>BarFly 100</b>	LUX	2659	743	338	191	125	87
	Meters	0.5	1	1.5	2	2.5	3

▼ Fixture Specifications

Fixture	Lamps	Lamp Type	Dimensions	Weight w/ Lamps
<b>BarFly 200</b>	2	F55/QFL	16 x 9 x 2.5" (40 x 22.5 x 6.5cm)	4.9 lb (2.2kg)
<b>BarFly 100</b>	1	F55/QFL	16 x 5.5 x 2.5" (40 x 14 x 6.5cm)	3.2 lb (1.4kg)

▼ Ballast Specifications

Fixture	Input Voltage	Output Frequency	Amps	Lamp Switch	Output Switch	Dimensions	Weight
<b>BarFly 200</b>	120VAC 50/60Hz	27kHz	2.1A	1-2	HO/Std	9.5 x 9 x 2.5" (24 x 23 x 6.5cm)	3.5 lb (1.6kg)
<b>BarFly 200</b>	230VAC 50/60Hz	27kHz	1.1A	1-2	HO/Std	9.5 x 9.5 x 2.5" (24 x 24 x 6.5cm)	4.0 lb (1.8kg)
<b>BarFly 100</b>	120VAC 50/60Hz	27kHz	1.1A	1-Off	HO/Std	11 x 2.5 x 2.5" (28 x 6.5 x 6.5cm)	2 lb (0.9kg)
<b>BarFly 100</b>	230VAC 50/60Hz	27kHz	0.8A	1-Off	HO/Std	10.5 x 4 x 2.5" (26.5 x 10 x 6.5cm)	2.8 lb (1.3kg)

▼ Details



▼ BarFly 200 System



**BAR-200G**  
BarFly 200 Fixture  
w/ Gel Frame  
and Louver 90°



**MTP-BL41S**  
Kino 41L Mount  
w/ Baby Short (16mm)



**BAL-207-G120**  
BarFly 200 Ballast,  
120VAC

**BAL-207-G230**  
BarFly 200 Ballast,  
230VAC

▼ BarFly 100 System



**BAR-100G**  
BarFly 100 Fixture  
w/ Gel Frame  
and Louver 90°



**MTP-BL41S**  
Kino 41L Mount  
w/ Baby Short (16mm)

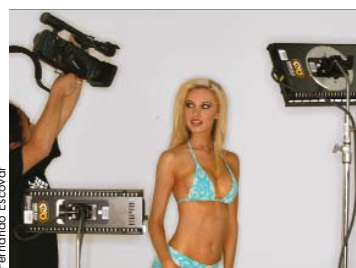


**BAL-107-G120**  
BarFly 100 Ballast,  
120VAC

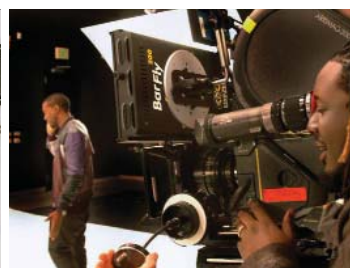
**BAL-107-G230**  
BarFly 100 Ballast,  
230VAC



Billy Brennan



Fernando Escovar



David Besedsky

▼ BarFly Accessories/ Lamps



**BAG-B2**  
Louver / Gel Bag



**BRD-BF2**  
BarFly 200 Snoot



**GFR-B2**  
BarFly 200 Gel Frame



**LVR-B160**  
BarFly 100 Louver 60°



**LVR-B245**  
BarFly 200 Louver 45°



**MTP-BFE**  
BarFly 200/100  
Edge Mount



**X09-G225**  
BarFly 200 Extension,  
25ft



**X09-G125**  
BarFly 100 Extension,  
25ft



**BAG-B21**  
BarFly 200/100 Soft Case  
(1-Unit)



**KAS-B22**  
BarFly 200 Ship Case (2-Unit)



**KAS-B12**  
BarFly 100 Ship Case (2-Unit)



**55Q-K29**  
55W Kino KF29 Quad

**55Q-K55**  
55W Kino KF55 Quad