

# Image DMX

## Image 85 DMX Kits



### **KIT-I85-X1/120**

Image 85 DMX Kit, 120VAC

### **KIT-I85-X1/230**

Image 85 DMX Kit, 230VAC

#### **Contents**

- 1 Image 85 DMX
- 1 Jr. Pin
- 1 Ship Case

#### **Dimensions**

56.5 x 8 x 35"  
(143.5 x 20.5 x 89cm)

#### **Weight**

65 lb (29.3kg)

## Image 45 Dmx Kits



### **KIT-I45-X1/120**

Image 45 DMX Kit, 120VAC

### **KIT-I45-X1/230**

Image 45 DMX Kit, 230VAC

#### **Contents**

- 1 Image 45 DMX
- 1 Jr. Pin
- 1 Ship Case



### **KIT-I85-X2/120**

Image 85 DMX Kit, 120VAC (2-Unit)

### **KIT-I85-X2/230**

Image 85 DMX Kit, 230VAC (2-Unit)

#### **Contents**

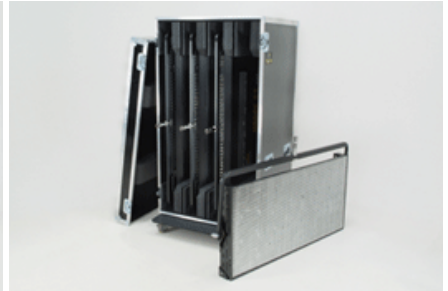
- 2 Image 85 DMX
- 2 Jr. Pin
- 1 Ship Case

#### **Dimensions**

56.5 x 16 x 35"  
(143.5 x 40.5 x 89cm)

#### **Weight**

160 lb (72.5kg)



### **KIT-I85-X4/120 (4-Unit)**

Image 85 DMX Kit, 120VAC

### **KIT-I85-X4/230 (4-Unit)**

Image 85 DMX Kit, 230VAC

#### **Contents**

- 4 Image 85 DMX
- 4 Jr. Pin
- 1 Ship Case

#### **Dimensions**

35 x 33 x 64"  
(89 x 84 x 162.5cm)

#### **Weight**

335 lb (152kg)

## Kino Flo Image Kits

**Dimensions**

56.5 x 9 x 23.5"  
(143.5 x 23 x 59.5cm)

**Weight**

48 lb (21.6kg)