



2840 N. Hollywood Way  
 Burbank, CA U.S.A. 91505-1023  
 Tel: +1 (818) 767-6528  
 Fax : +1 (818) 767-7517  
 www.kinoflo.com

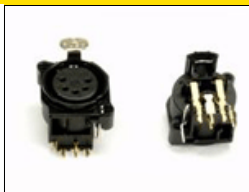


**VIS-3Y-230**  
 VistaBeam 300 Dmx Yoke Mount, 230vac

# Spare Parts



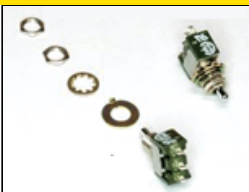
**1170003**  
 EMI-5A-250V



**1270157**  
 CT-Xlr-PCB-Female-5-Pin-Right-Angle



**1270158**  
 CT-Xlr-PCB-Male-5-Pin-Right-Angle



**1290013**  
 SW-Toggle-Miniature-SPDT-5A



**1290023**  
 SW-Wheel-3-Section-w/Lens



**1290030**  
 SW-Rocker-DPST-16A-Lit-Red-250V



**1300020**  
 FU-5X20-Cer-Sloblow-4A/250V



**1320016**  
 Fuseholder-Panel Mount 5X20-LoPro



**1380015**  
 Lampholder 96W "Vista"/55W BarFly



**2240020**  
 Knob T 1/4-28 X 1-5/8" ST ZI Kino



**2240022**  
 Knob Rnd Collet 1/8" X 14.5mm Blk



**2240024**  
 Knob Nut Cover 14.5mm Blk



**2240025**  
 Knob Cap 14.5mm Yel w/ Wht Line



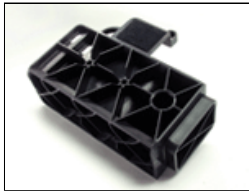
**2290023**  
 Lamp Clip Assembly



**5010096**  
 VistaBeam Yoke Bracket. Used in Rev B or Higher.



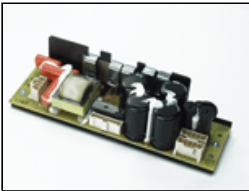
**5250005**  
 VistaBeam Molded Corner Left



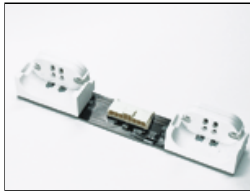
**5250006**  
 VistaBeam Molded Corner Right



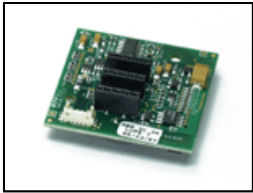
**6110045**  
 VistaBeam 300 Lamp Selector SW



**6800096**  
 Vista 96W Ballast UL

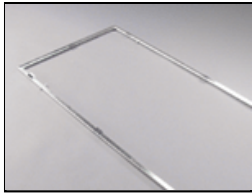


**6800112**  
 Vista Lampholder PCB (2 LAMP)



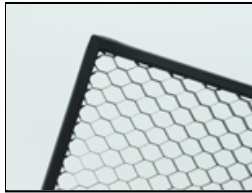
**6800125**

Dmx Motherboard VistaBeam



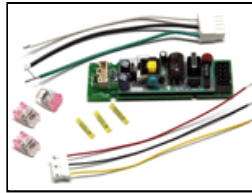
**GFR-V3**

VistaBeam 300  
Gel Frame



**LVR-V390**

VistaBeam 300  
Louver 90°



**PRT-PWS52**

Repair Kit PWS 5/12V Dmx  
Samtec



**PRT-SC200**

Screws for Ballast/ DMX Lid  
(100PK)



**YOK-V31**

VistaBeam 300 Yoke  
Assembly

**Lamps:**



**964-K32**

96W Kino KF32 (Twin)



**964-K55**

96W Kino KF55 (Twin)