



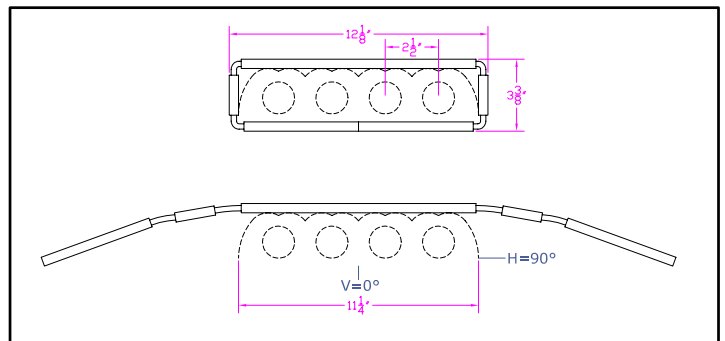
**IES INDOOR REPORT
PHOTOMETRIC FILENAME : LLI080707A.IES**

DESCRIPTION INFORMATION (From Photometric File)

IESNA:LM-63-2002
[TEST] LLI 0807-07A
[TESTLAB] LIGHT LABORATORY INC
[ISSUEDATE] 8/15/2007
[MANUFAC] KINO FLO, INC.
[LUMCAT] 4FT 4BANK OPEN FACE
[LUMINAIRE] 48-3/4"L. X 14-3/8"W. X 6-1/4"H. STUDIO FIXTURE
[MORE] SPECULAR REFLECTOR
[BALLASTCAT] KINOFLO 4FT 4BANK
[BALLAST] 120V 50/60Hz ELECTRONIC
[LAMPPOSITION] 0,90
[LAMPCAT] KINO FLO F75/T12/HO/800
[OTHER] INDICATING THE CANDELA VALUES ARE ABSOLUTE AND
[MORE] SHOULD NOT BE FACTORED FOR DIFFERENT LAMP RATINGS.
[_LAMPLUM] 3290
[_INPUT] 120VAC, 287.5W

CHARACTERISTICS

Total Rated Lamp Lumens	N.A. (absolute photometry)
Total Luminaire Efficiency	N.A.
CIE Type	Direct
Spacing Criteria (0-180)	1.32
Spacing Criteria (90-270)	1.26
Spacing Criteria (Diagonal)	1.42
Basic Luminous Shape	Rectangular
Luminous Length (0-180)	4.00 ft
Luminous Width (90-270)	1.12 ft
Luminous Height	0.00 ft



LUMINANCE DATA (cd/sq.m)

Angle In Degrees	Average 0-Deg	Average 45-Deg	Average 90-Deg
45	5398	5364	5224
55	4926	5139	4922
65	4067	4618	3976
75	2615	2996	2374
85	689	1570	2424

**IES INDOOR REPORT
 PHOTOMETRIC FILENAME : LLI080707A.IES**

CANDELA TABULATION

	<u>0</u>	<u>22.5</u>	<u>45</u>	<u>67.5</u>	<u>90</u>
0	2278	2278	2278	2278	2278
5	2429	2414	2338	2247	2210
15	2357	2356	2302	2217	2182
25	2176	2180	2125	2034	2003
35	1918	1917	1845	1826	1826
45	1590	1570	1580	1560	1539
55	1177	1174	1228	1194	1176
65	716	779	813	736	700
75	282	359	323	272	256
85	25	39	57	82	88
90	9	10	10	10	10
95	8	11	12	13	16
105	9	15	17	19	19
115	12	20	23	24	24
125	13	16	28	29	29
135	14	16	28	32	33
145	16	17	21	28	29
155	17	18	20	21	22
165	17	17	18	18	18
175	16	16	16	16	16
180	15	15	15	15	15

IES INDOOR REPORT
PHOTOMETRIC FILENAME : LLI080707A.IES

ZONAL LUMEN SUMMARY

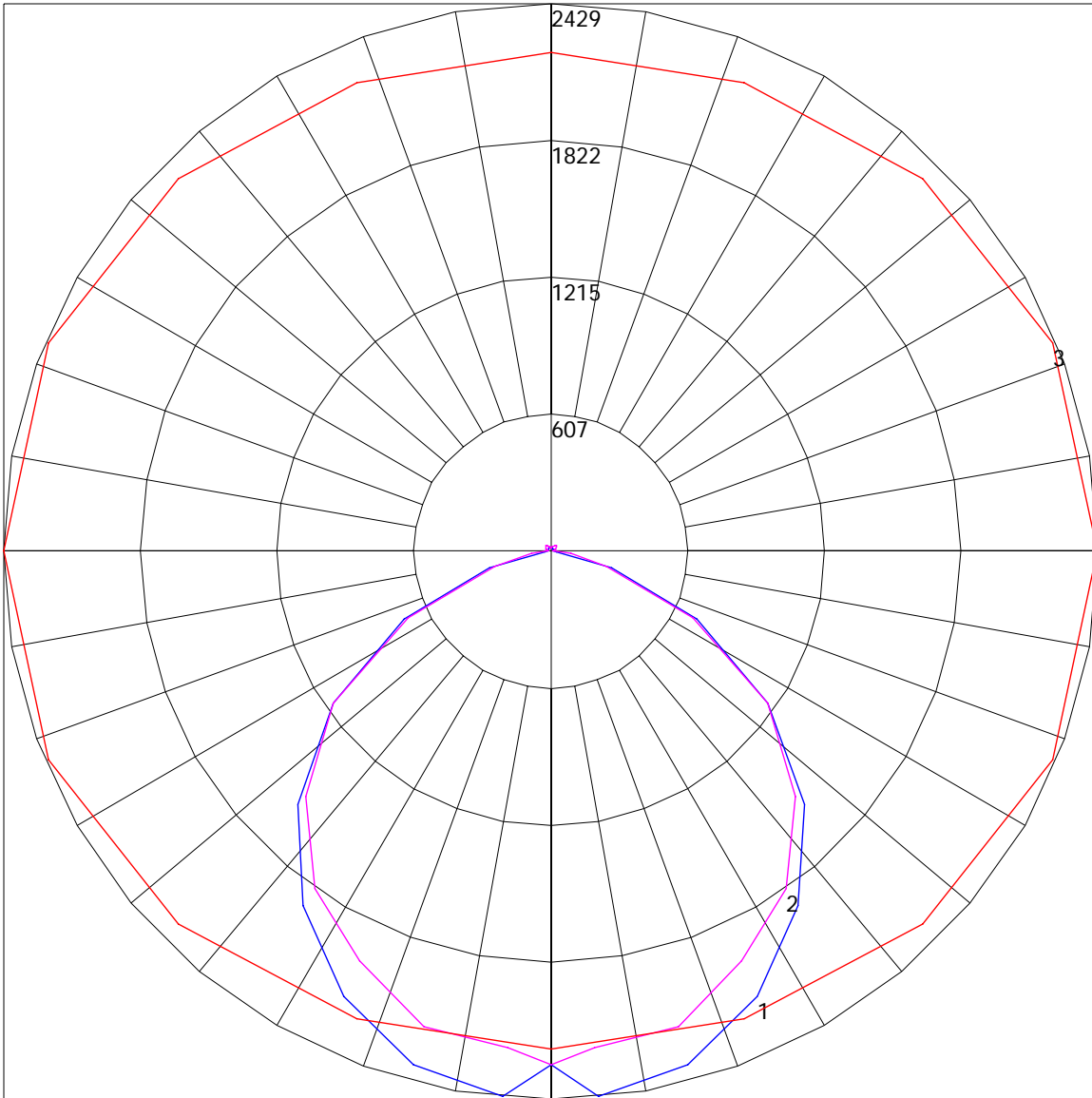
Zone	Lumens	%Lamp	%Fixt
0-30	1316.84	N.A.	20
0-40	2404.44	N.A.	36.5
0-60	4771.63	N.A.	72.5
0-90	6460.59	N.A.	98.2
90-120	40.52	N.A.	.6
90-130	61.74	N.A.	.9
90-150	98.58	N.A.	.9
90-180	120.56	N.A.	1.8
0-180	6581.15	N.A.	100

Total Luminaire Efficiency = N.A.%

ZONAL LUMEN SUMMARY

Zone	Lumens
0-10	55.08
10-20	438.92
20-30	822.84
30-40	1087.6
40-50	1208.64
50-60	1158.55
60-70	925.79
70-80	547.91
80-90	215.26
90-100	5.99
100-110	15.24
110-120	19.3
120-130	21.22
130-140	20.29
140-150	16.54
150-160	11.43
160-170	6.98
170-180	3.57

POLAR GRAPH



Maximum Candela = 2429 Located At Horizontal Angle = 0, Vertical Angle = 5
1 - Vertical Plane Through Horizontal Angles (0 - 180) (Through Max. Cd.) : BLUE
2 - Vertical Plane Through Horizontal Angles (90 - 270) : MAGENTA
3 - Horizontal Cone Through Vertical Angle (5) (Through Max. Cd.) : RED