



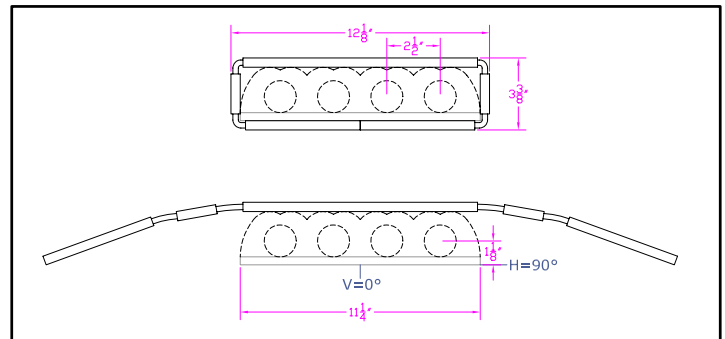
**IES INDOOR REPORT
PHOTOMETRIC FILENAME : LLI080707B.IES**

DESCRIPTION INFORMATION (From Photometric File)

IESNA:LM-63-2002
[TEST] LLI 0807-07B
[TESTLAB] LIGHT LABORATORY INC
[ISSUEDATE] 8/15/2007
[MANUFAC] KINO FLO, INC.
[LUMCAT] 4FT 4BANK BLACK SQUARE LOUVERS
[LUMINAIRE] 48-3/4"L. X 14-3/8"W. X 6-1/4"H. STUDIO FIXTURE
[MORE] SPECULAR REFLECTOR
[MORE] BLACK SQUARE LOUVERS
[BALLASTCAT] KINOFLO 4FT 4BANK
[BALLAST] 120V 50/60Hz ELECTRONIC
[LAMPPOSITION] 0,90
[LAMPCAT] KINO FLO F75/T12/HO/800
[OTHER] INDICATING THE CANDELA VALUES ARE ABSOLUTE AND
[MORE] SHOULD NOT BE FACTORED FOR DIFFERENT LAMP RATINGS.
[_LAMPLUM] 3290
[_INPUT] 120VAC, 284.6W

CHARACTERISTICS

Total Rated Lamp Lumens	N.A. (absolute photometry)
Total Luminaire Efficiency	N.A.
CIE Type	Direct
Spacing Criteria (0-180)	0.98
Spacing Criteria (90-270)	0.90
Spacing Criteria (Diagonal)	0.98
Basic Luminous Shape	Rectangular
Luminous Length (0-180)	4.00 ft
Luminous Width (90-270)	1.12 ft
Luminous Height	0.00 ft



LUMINANCE DATA (cd/sq.m)

Angle In Degrees	Average 0-Deg	Average 45-Deg	Average 90-Deg
45	1779	1572	1643
55	590	711	586
65	153	256	540
75	46	510	788
85	83	1350	1900

CANDELA TABULATION

	<u>0</u>	<u>22.5</u>	<u>45</u>	<u>67.5</u>	<u>90</u>
0	1873	1873	1873	1873	1873
5	1938	1926	1862	1789	1758
15	1678	1661	1594	1556	1544
25	1307	1261	1210	1176	1196
35	923	876	812	822	864
45	524	475	463	462	484
55	141	154	170	156	140
65	27	23	45	79	95
75	5	7	55	72	85
85	3	10	49	63	69
90	3	4	5	5	5
95	3	6	8	9	11
105	4	11	14	16	16
115	6	15	19	20	20
125	7	11	23	24	25
135	9	11	19	27	27
145	11	12	16	22	24
155	12	13	14	16	16
165	12	12	13	13	13
175	11	11	11	11	11
180	10	10	10	10	10

IES INDOOR REPORT
PHOTOMETRIC FILENAME : LLI080707B.IES

ZONAL LUMEN SUMMARY

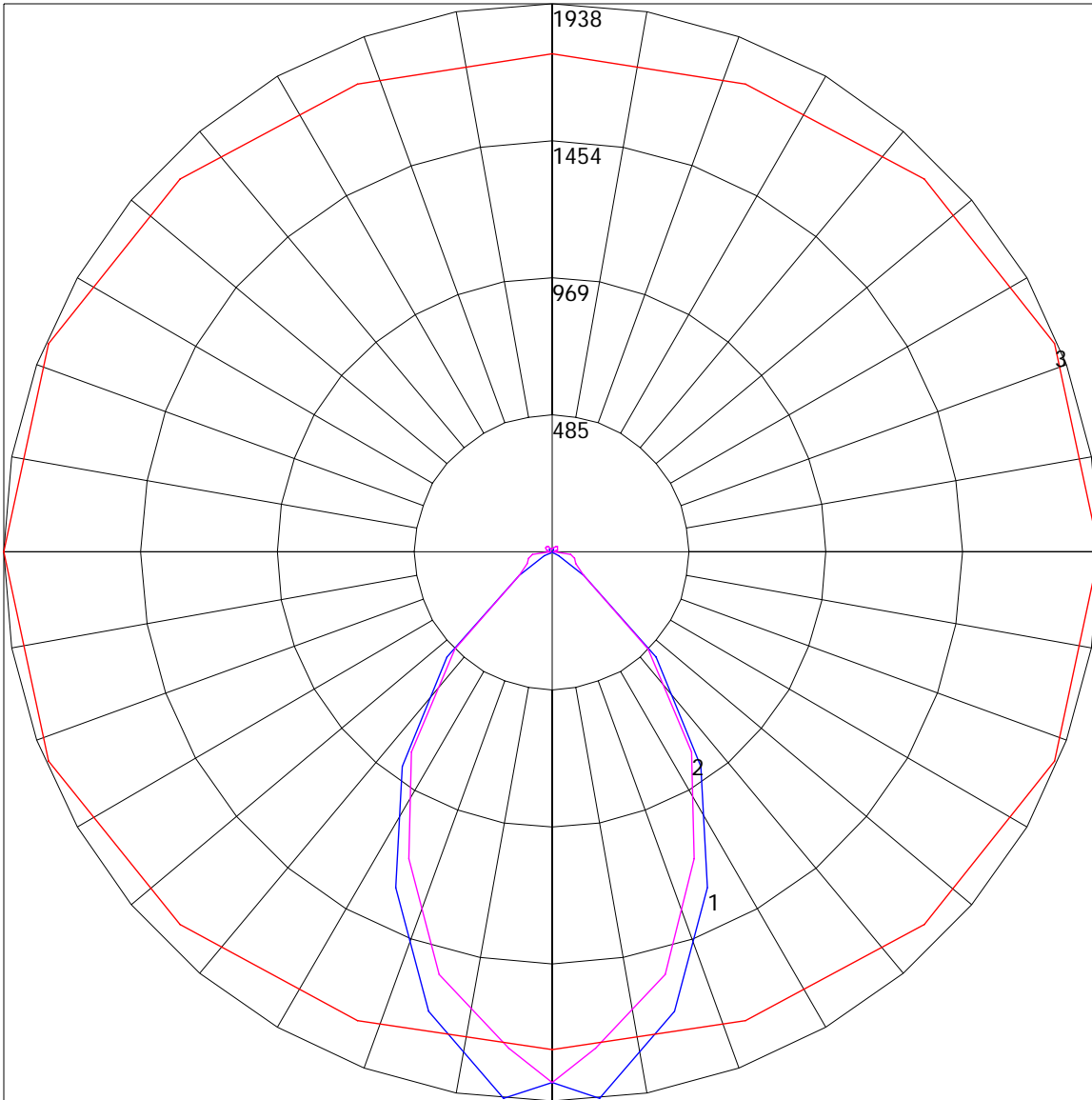
Zone	Lumens	%Lamp	%Fixt
0-30	903.84	N.A.	36.2
0-40	1472.13	N.A.	58.9
0-60	2203.94	N.A.	88.2
0-90	2409.44	N.A.	96.4
90-120	29.39	N.A.	1.2
90-130	46.1	N.A.	1.8
90-150	74.27	N.A.	1.8
90-180	90.32	N.A.	3.6
0-180	2499.77	N.A.	100

Total Luminaire Efficiency = N.A.%

ZONAL LUMEN SUMMARY

Zone	Lumens
0-10	44.58
10-20	329.19
20-30	530.07
30-40	568.29
40-50	467.06
50-60	264.76
60-70	98.23
70-80	49.79
80-90	57.48
90-100	3.29
100-110	10.92
110-120	15.18
120-130	16.72
130-140	15.63
140-150	12.54
150-160	8.52
160-170	5.03
170-180	2.5

POLAR GRAPH



Maximum Candela = 1938 Located At Horizontal Angle = 0, Vertical Angle = 5
1 - Vertical Plane Through Horizontal Angles (0 - 180) (Through Max. Cd.) : BLUE
2 - Vertical Plane Through Horizontal Angles (90 - 270) : MAGENTA
3 - Horizontal Cone Through Vertical Angle (5) (Through Max. Cd.) : RED