

itl boulder

THE LIGHT CENTER OF THE INDUSTRY SINCE 1955

INDEPENDENT TESTING LABORATORIES, INC.
3386 LONGHORN ROAD, BOULDER, CO 80302 USA

PHONE: (303)442-1255 • FAX: (303)449-5274 • E-MAIL: itl@itlboulder.com • WEBSITE: www.itlboulder.com

DATE: 04/14/08

REPORT NUMBER: ITL60032

PREPARED FOR: KINO FLO LIGHTING SYSTEMS

CATALOG NUMBER: CFX-7404

LUMINAIRE: FABRICATED CORRUGATED BLACK PLASTIC ADJUSTABLE HOUSING WITH WHITE UPPER INTERIOR, FORMED MULTI-FACETED SPECULAR METAL REFLECTOR, MOLDED TWO PIECE BLACK PLASTIC MULTI-CELL LOUVER. ADJUSTABLE HOUSING ADJUSTED AS SHOWN IN DRAWING.

LAMPS: FOUR 100-WATT T-12 KINO FLO KF29 F100T12/HO/800 LINEAR FLUORESCENTS, EACH LAMP ENCASED IN CLEAR PLASTIC PROTECTIVE SLEEVE.

BALLAST: KINO FLO INCORPORATED BAL-405M

NOTE: THIS REPORT WAS PRORATED FROM ITL REPORT NUMBER 60033 WHICH WAS TESTED USING FOUR 120-WATT T-12 KINO FLO KF29 F120T12/HO/800 LINEAR FLUORESCENT LAMPS. ACTUAL PERFORMANCE MAY VARY. THE LAMP UTILIZED FOR THIS TEST WAS NOT CHECKED FOR LIGHT OUTPUT SYMMETRY, AS IS STANDARD PRACTICE PER IESNA LM-41-98.

REPORT IS BASED ON 4675 LUMENS PER LAMP.

CANDELA DISTRIBUTION

CANDELA DISTRIBUTION						FLUX
0.0	22.5	45.0	67.5	90.0		
0	3565	3565	3565	3565	3565	
5	3454	3434	3420	3439	3466	323
15	2961	2901	2855	2890	2929	814
25	2342	2237	2143	2202	2281	1021
35	1645	1526	1460	1578	1708	972
45	916	843	879	953	1026	705
55	253	294	378	311	258	284
65	65	83	45	37	43	58
75	36	37	12	5	5	20
85	20	22	7	2	2	11
90	7	15	4	0	0	

ZONAL LUMEN SUMMARY

ZONE	LUMENS	%LAMP	%FIXT
0- 30	2158	11.5	51.3
0- 40	3131	16.7	74.4
0- 60	4119	22.0	97.9
0- 90	4209	22.5	100.0
90-180	0	0.0	0.0
0-180	4209	22.5	100.0

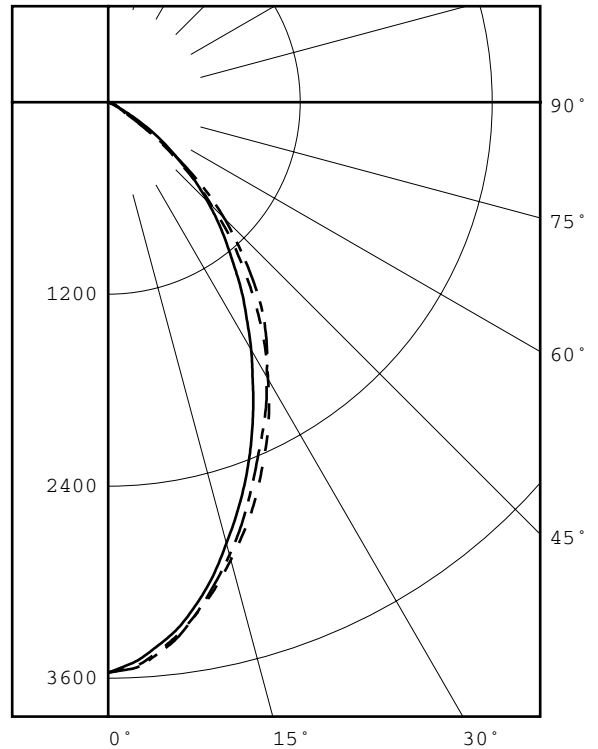
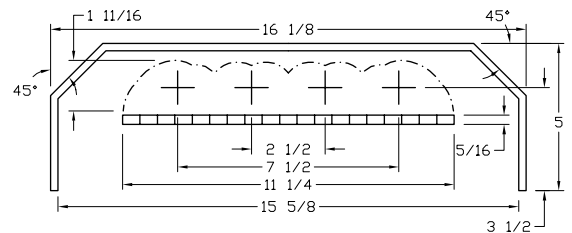
TOTAL LUMINAIRE EFFICIENCY = 22.5 %

CIE TYPE - DIRECT

PLANE	: 0-DEG	90-DEG	
SPACING CRITERIA	: 0.9	0.9	
SHIELDING ANGLES	: 28	28	
BEAM ANGLE (50%)	: 66.2	X 67.4	DEGREES
FIELD ANGLE (10%)	: 106.7	X 107.5	DEGREES
LUMINOUS LENGTH	: 73.250	15.625	

LUMINANCE DATA IN CANDELA/SQ M

ANGLE IN DEG	AVERAGE 0-DEG	AVERAGE 45-DEG	AVERAGE 90-DEG
45	1754.	1684.	1965.
55	597.	893.	609.
65	208.	144.	138.
75	188.	63.	26.
85	311.	109.	31.



LEGEND:

0-deg: - - - - -
45-deg: = = = = =
90-deg: - - - - -

Checked B. HYRE

Approved R. BEATTIE



INDEPENDENT TESTING LABORATORIES, INC.
 3386 LONGHORN ROAD, BOULDER, CO 80302 USA

PHONE: (303)442-1255 • FAX: (303)449-5274 • E-MAIL: itl@itlboulder.com • WEBSITE: www.itlboulder.com

REPORT NUMBER: ITL60032
 PREPARED FOR: KINO FLO LIGHTING SYSTEMS

DATE: 04/14/08

CANDELA DISTRIBUTION

	0.0	22.5	45.0	67.5	90.0
0.0	3565	3565	3565	3565	3565
2.5	3533	3513	3508	3523	3543
5.0	3454	3434	3420	3439	3466
7.5	3354	3329	3319	3338	3368
10.0	3234	3199	3183	3202	3230
12.5	3106	3060	3031	3046	3082
15.0	2961	2901	2855	2890	2929
17.5	2818	2754	2685	2727	2770
20.0	2667	2584	2510	2545	2599
22.5	2502	2409	2328	2360	2430
25.0	2342	2237	2143	2202	2281
27.5	2177	2058	1956	2035	2138
30.0	1998	1884	1788	1887	1981
32.5	1827	1704	1614	1726	1849
35.0	1645	1526	1460	1578	1708
37.5	1461	1343	1296	1439	1550
40.0	1281	1177	1150	1278	1372
42.5	1108	1009	1017	1116	1195
45.0	916	843	879	953	1026
47.5	759	696	748	800	847
50.0	574	553	610	643	643
52.5	410	420	487	468	454
55.0	253	294	378	311	258
57.5	131	183	263	172	140
60.0	93	115	162	92	85
62.5	78	92	83	57	63
65.0	65	83	45	37	43
67.5	55	77	27	22	26
70.0	44	67	19	12	15
72.5	39	49	12	7	8
75.0	36	37	12	5	5
77.5	32	31	9	4	4
80.0	31	26	9	3	3
82.5	26	26	9	3	2
85.0	20	22	7	2	2
87.5	13	18	5	0	0
90.0	7	15	4	0	0

ZONAL	LUMEN	SUMMARY
0-	5	84.
5-	10	239.
10-	15	363.
15-	20	452.
20-	25	501.
25-	30	519.
30-	35	507.
35-	40	466.
40-	45	397.
45-	50	308.
50-	55	196.
55-	60	87.
60-	65	37.
65-	70	21.
70-	75	12.
75-	80	8.
80-	85	7.
85-	90	4.



INDEPENDENT TESTING LABORATORIES, INC.
 3386 LONGHORN ROAD, BOULDER, CO 80302 USA

PHONE: (303)442-1255 • FAX: (303)449-5274 • E-MAIL: itl@itlboulder.com • WEBSITE: www.itlboulder.com

REPORT NUMBER: ITL60032

DATE: 04/14/08

PREPARED FOR: KINO FLO LIGHTING SYSTEMS

COEFFICIENTS OF UTILIZATION - ZONAL CAVITY METHOD

EFFECTIVE FLOOR CAVITY REFLECTANCE 0.20

RC RW	80				70				50			30			10			0
	70	50	30	10	70	50	30	10	50	30	10	50	30	10	50	30	10	0
0	27	27	27	27	26	26	26	26	25	25	25	24	24	24	23	23	23	23
1	25	25	24	23	25	24	23	23	23	23	22	22	22	22	22	21	21	21
2	24	22	21	20	23	22	21	20	21	21	20	21	20	19	20	19	19	19
3	22	21	19	18	22	20	19	18	20	19	18	19	18	17	19	18	17	17
4	21	19	17	16	20	19	17	16	18	17	16	18	17	16	17	16	16	15
5	20	17	16	15	19	17	16	15	17	15	14	16	15	14	16	15	14	14
6	18	16	14	13	18	16	14	13	15	14	13	15	14	13	15	14	13	13
7	17	15	13	12	17	15	13	12	14	13	12	14	13	12	14	13	12	12
8	16	14	12	11	16	14	12	11	13	12	11	13	12	11	13	12	11	11
9	15	13	11	10	15	13	11	10	13	11	10	12	11	10	12	11	10	10
10	15	12	11	10	14	12	11	10	12	10	10	12	10	9	11	10	9	9

ALL CANDELA, LUMENS, LUMINANCE, COEFFICIENT OF UTILIZATION AND VCP VALUES IN THIS REPORT ARE BASED ON RELATIVE PHOTOMETRY WHICH ASSUMES A BALLAST FACTOR OF 1.000. ANY CALCULATIONS PREPARED FROM THESE DATA SHOULD INCLUDE AN APPROPRIATE BALLAST FACTOR.