

itl boulder

THE LIGHT CENTER OF THE INDUSTRY SINCE 1955

INDEPENDENT TESTING LABORATORIES, INC.
3386 LONGHORN ROAD, BOULDER, CO 80302 USA

PHONE: (303)442-1255 • FAX: (303)449-5274 • E-MAIL: itl@itlboulder.com • WEBSITE: www.itlboulder.com

DATE: 04/14/08

REPORT NUMBER: ITL60024

PREPARED FOR: KINO FLO LIGHTING SYSTEMS

CATALOG NUMBER: CFX-7201

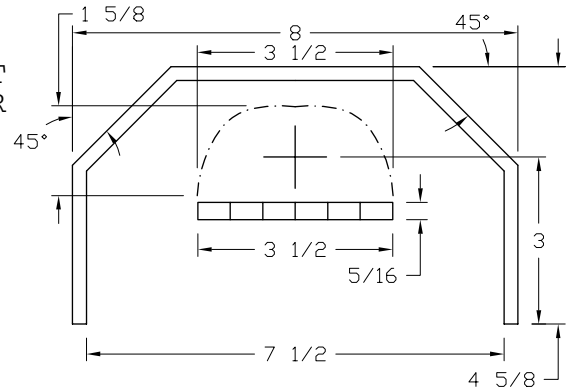
LUMINAIRE: FABRICATED CORRUGATED BLACK PLASTIC ADJUSTABLE HOUSING WITH WHITE UPPER INTERIOR, FORMED MULTI-FACETED SPECULAR METAL REFLECTOR, MOLDED TWO PIECE BLACK PLASTIC MULTI-CELL LOUVER. ADJUSTABLE HOUSING ADJUSTED AS SHOWN IN DRAWING.

LAMP: ONE 100-WATT T-12 KINO FLO KF29 F100T12/HO/800 LINEAR FLUORESCENT, LAMP ENCASED IN CLEAR PLASTIC PROTECTIVE SLEEVE.

BALLAST: KINO FLO INCORPORATED BAL-105M

NOTE: THIS REPORT WAS PRORATED FROM ITL REPORT NUMBER 60025 WHICH WAS TESTED USING ONE 120-WATT T-12 KINO FLO KF29 F120T12/HO/800 LINEAR FLUORESCENT LAMP. ACTUAL PERFORMANCE MAY VARY. THE LAMP UTILIZED FOR THIS TEST WAS NOT CHECKED FOR LIGHT OUTPUT SYMMETRY, AS IS STANDARD PRACTICE PER IESNA LM-41-98.

REPORT IS BASED ON 4675 LUMENS PER LAMP.



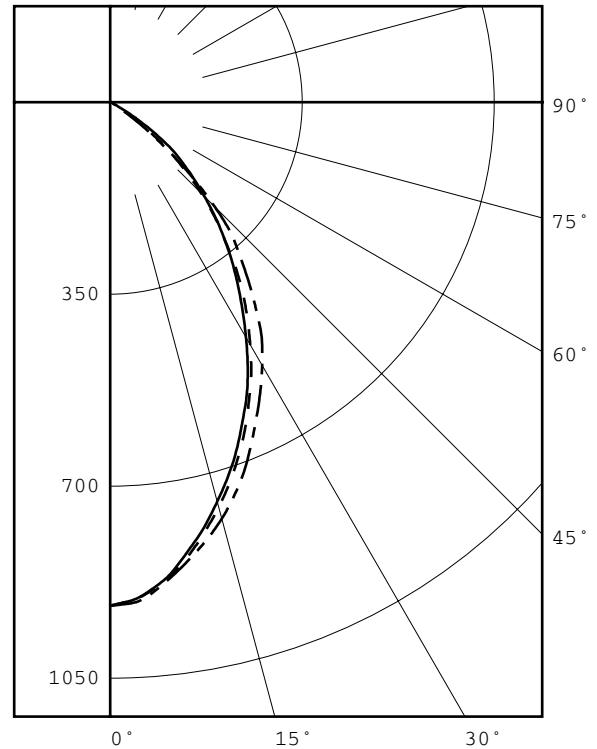
CANDELA DISTRIBUTION						FLUX
0.0	22.5	45.0	67.5	90.0		
0	918	918	918	918	918	
5	892	889	890	892	897	84
15	764	756	754	774	786	215
25	599	586	589	612	632	276
35	420	407	405	441	465	264
45	234	230	243	268	270	190
55	63	83	102	62	45	70
65	16	31	6	7	8	15
75	7	7	3	2	2	5
85	3	4	1	0	0	2
90	0	3	0	0	0	

ZONAL LUMEN SUMMARY			
ZONE	LUMENS	%LAMP	%FIXT
0- 30	575	12.3	51.2
0- 40	839	17.9	74.8
0- 60	1100	23.5	98.1
0- 90	1121	24.0	100.0
90-180	0	0.0	0.0
0-180	1121	24.0	100.0

TOTAL LUMINAIRE EFFICIENCY = 24.0 %

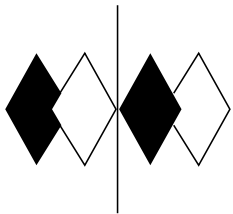
CIE TYPE - DIRECT
PLANE : 0-DEG 90-DEG
SPACING CRITERIA : 0.9 1.0
SHIELDING ANGLES : 28 28
BEAM ANGLE (50%) : 65.7 X 70.6 DEGREES
FIELD ANGLE (10%) : 106.3 X 104.8 DEGREES
LUMINOUS LENGTH : 73.250 7.500

LUMINANCE DATA IN CANDELA/SQ M			
ANGLE IN DEG	AVERAGE 0-DEG	AVERAGE 45-DEG	AVERAGE 90-DEG
45	934.	970.	1077.
55	310.	502.	221.
65	107.	40.	53.
75	76.	33.	22.
85	97.	32.	0.



LEGEND:
0-deg: - - - - -
45-deg: _____
90-deg:

Checked B. HYRE
Approved R. BEATTIE



itl boulder
THE LIGHT CENTER OF THE INDUSTRY SINCE 1955

INDEPENDENT TESTING LABORATORIES, INC.
 3386 LONGHORN ROAD, BOULDER, CO 80302 USA

PHONE: (303)442-1255 • FAX: (303)449-5274 • E-MAIL: itl@itlboulder.com • WEBSITE: www.itlboulder.com

REPORT NUMBER: ITL60024
 PREPARED FOR: KINO FLO LIGHTING SYSTEMS

DATE: 04/14/08

CANDELA DISTRIBUTION

	0.0	22.5	45.0	67.5	90.0
0.0	918	918	918	918	918
2.5	909	906	909	909	914
5.0	892	889	890	892	897
7.5	867	863	864	866	871
10.0	836	832	828	838	844
12.5	801	796	793	807	816
15.0	764	756	754	774	786
17.5	726	715	715	739	752
20.0	685	673	674	700	715
22.5	643	630	630	656	673
25.0	599	586	589	612	632
27.5	557	542	543	569	593
30.0	510	496	495	528	554
32.5	465	454	449	485	515
35.0	420	407	405	441	465
37.5	372	361	364	394	416
40.0	322	317	323	348	369
42.5	280	274	283	310	328
45.0	234	230	243	268	270
47.5	189	192	207	216	206
50.0	145	153	173	157	142
52.5	102	117	142	104	90
55.0	63	83	102	62	45
57.5	33	56	61	30	23
60.0	23	39	32	16	16
62.5	19	33	13	11	12
65.0	16	31	6	7	8
67.5	12	29	5	5	5
70.0	10	20	4	3	3
72.5	8	10	3	3	3
75.0	7	7	3	2	2
77.5	6	6	3	2	1
80.0	6	6	3	1	1
82.5	5	5	2	0	1
85.0	3	4	1	0	0
87.5	3	3	1	0	0
90.0	0	3	0	0	0

ZONAL LUMEN SUMMARY

0- 5	22.
5- 10	62.
10- 15	95.
15- 20	120.
20- 25	135.
25- 30	141.
30- 35	138.
35- 40	126.
40- 45	108.
45- 50	82.
50- 55	50.
55- 60	20.
60- 65	9.
65- 70	6.
70- 75	3.
75- 80	2.
80- 85	1.
85- 90	1.



INDEPENDENT TESTING LABORATORIES, INC.
 3386 LONGHORN ROAD, BOULDER, CO 80302 USA

PHONE: (303)442-1255 • FAX: (303)449-5274 • E-MAIL: itl@itlboulder.com • WEBSITE: www.itlboulder.com

REPORT NUMBER: ITL60024

DATE: 04/14/08

PREPARED FOR: KINO FLO LIGHTING SYSTEMS

COEFFICIENTS OF UTILIZATION - ZONAL CAVITY METHOD

EFFECTIVE FLOOR CAVITY REFLECTANCE 0.20

RC RW	80				70				50			30			10			0
	70	50	30	10	70	50	30	10	50	30	10	50	30	10	50	30	10	0
0	29	29	29	29	28	28	28	28	27	27	27	26	26	26	24	24	24	24
1	27	26	26	25	26	26	25	24	25	24	24	24	23	23	23	23	22	22
2	25	24	23	22	25	24	23	22	23	22	21	22	21	21	21	21	20	20
3	24	22	21	19	23	22	20	19	21	20	19	20	19	19	20	19	18	18
4	22	20	19	17	22	20	18	17	19	18	17	19	18	17	18	17	17	16
5	21	19	17	16	20	18	17	16	18	16	15	17	16	15	17	16	15	15
6	20	17	15	14	19	17	15	14	17	15	14	16	15	14	16	15	14	13
7	18	16	14	13	18	16	14	13	15	14	13	15	14	13	15	14	13	12
8	17	15	13	12	17	15	13	12	14	13	12	14	13	12	14	13	12	11
9	16	14	12	11	16	14	12	11	13	12	11	13	12	11	13	12	11	10
10	15	13	11	10	15	13	11	10	13	11	10	12	11	10	12	11	10	10

ALL CANDELA, LUMENS, LUMINANCE, COEFFICIENT OF UTILIZATION AND VCP VALUES IN THIS REPORT ARE BASED ON RELATIVE PHOTOMETRY WHICH ASSUMES A BALLAST FACTOR OF 1.000. ANY CALCULATIONS PREPARED FROM THESE DATA SHOULD INCLUDE AN APPROPRIATE BALLAST FACTOR.