



**IES INDOOR REPORT
PHOTOMETRIC FILENAME : LLI040707H.IES**

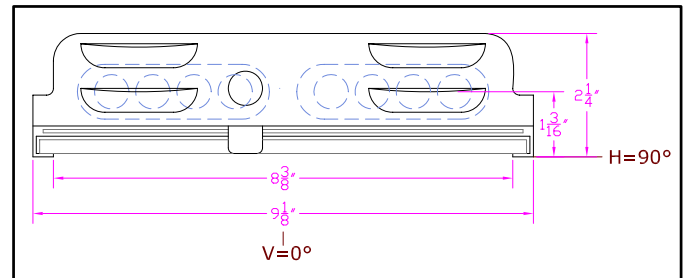
DESCRIPTION INFORMATION (From Photometric File) *

IESNA:LM-63-2002
[TEST] LLI 0407-07H
[TESTLAB] LIGHT LABORATORY INC
[ISSUE DATE] 4/24/2007
[MANUFAC] KINO FLO, INC.
[LUMCAT] BARFLY 200/45 DEGREE
[LUMINAIRE] 16-1/2"L. X 9-1/8"W. X 2-1/4"H. STUDIO FIXTURE
[MORE] WHITE PAINTED REFLECTOR
[MORE] 45 DEGREE SPOT HEXCEL LOUVERS
[BALLASTCAT] KINOFLO BAL-207-120
[BALLAST] 120V 50/60Hz ELECTRONIC
[LAMPPOSITION] 180,90
[LAMPCAT] KINO FLO TRUE MATCH 55Q-K29
[OTHER] INDICATING THE CANDELA VALUES ARE ABSOLUTE AND
[MORE] SHOULD NOT BE FACTORED FOR DIFFERENT LAMP RATINGS.
[_LAMPLUM] 2720
[_INPUT] 120VAC, 117.3W

*10/1/11 BAR-200D matches photometrically to BAR-200G & BAL-207-120

CHARACTERISTICS

Total Rated Lamp Lumens	N.A. (absolute photometry)
Total Luminaire Efficiency	N.A.
CIE Type	Direct
Spacing Criteria (0-180)	0.42
Spacing Criteria (90-270)	0.48
Spacing Criteria (Diagonal)	0.50
Basic Luminous Shape	Rectangular
Luminous Length (0-180)	1.15 ft
Luminous Width (90-270)	0.70 ft
Luminous Height	0.00 ft



LUMINANCE DATA (cd/sq.m)

Angle In Degrees	Average 0-Deg	Average 45-Deg	Average 90-Deg
45	132	151	57
55	70	70	23
65	32	32	32
75	103	52	52
85	613	153	153

IES INDOOR REPORT
PHOTOMETRIC FILENAME : LLI040707H.IES

CANDELA TABULATION

	<u>0</u>	<u>22.5</u>	<u>45</u>	<u>67.5</u>	<u>90</u>
0	1035	1035	1035	1035	1035
5	833	849	878	886	888
15	392	406	456	484	480
25	70	75	79	117	146
35	21	23	23	16	12
45	7	8	8	6	3
55	3	3	3	2	1
65	1	1	1	1	1
75	2	1	1	1	1
85	4	4	1	0	1
90	0	0	0	0	0

IES INDOOR REPORT
PHOTOMETRIC FILENAME : LLI040707H.IES

ZONAL LUMEN SUMMARY

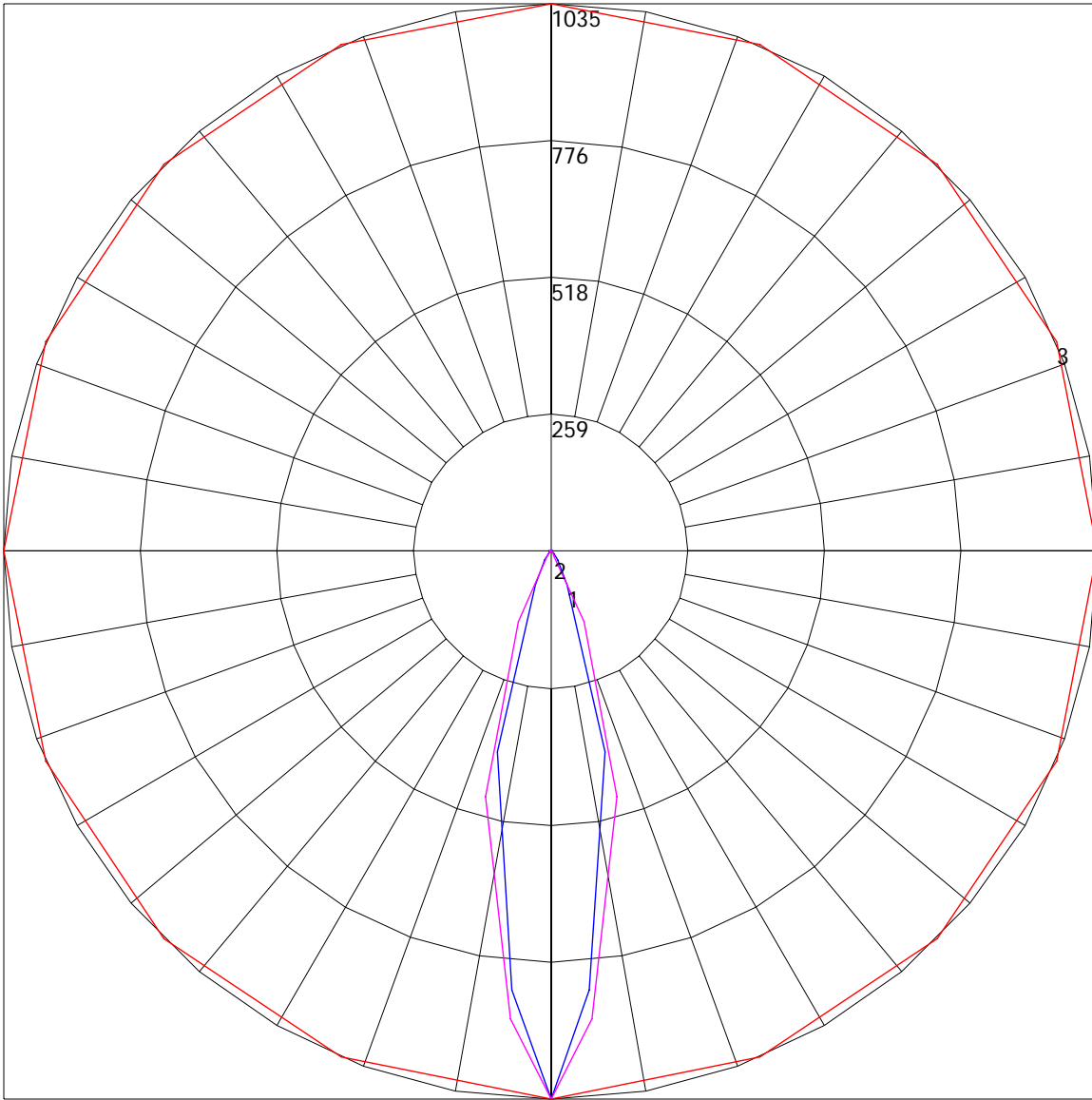
Zone	Lumens	%Lamp	%Fixt
0-30	248.88	N.A.	83.4
0-40	280.2	N.A.	93.9
0-60	293.36	N.A.	98.4
0-90	298.25	N.A.	100
90-120	0	N.A.	0
90-130	0	N.A.	0
90-150	0	N.A.	0
90-180	0	N.A.	0
0-180	298.25	N.A.	100

Total Luminaire Efficiency = N.A.%

ZONAL LUMEN SUMMARY

Zone	Lumens
0-10	22.75
10-20	124.94
20-30	101.19
30-40	31.32
40-50	9.28
50-60	3.88
60-70	1.66
70-80	1.09
80-90	2.13
90-100	0
100-110	0
110-120	0
120-130	0
130-140	0
140-150	0
150-160	0
160-170	0
170-180	0

POLAR GRAPH



Maximum Candela = 1035 Located At Horizontal Angle = 0, Vertical Angle = 0
1 - Vertical Plane Through Horizontal Angles (0 - 180) (Through Max. Cd.) : BLUE
2 - Vertical Plane Through Horizontal Angles (90 - 270) : MAGENTA
3 - Horizontal Cone Through Vertical Angle (0) (Through Max. Cd.) : RED