



**IES INDOOR REPORT
PHOTOMETRIC FILENAME : LLI040707F.IES**

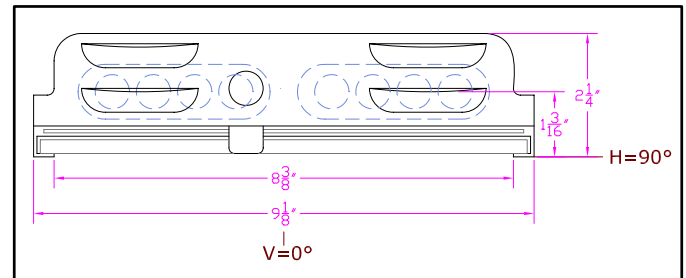
DESCRIPTION INFORMATION (From Photometric File) *

IESNA:LM-63-2002
[TEST] LLI 0407-07F
[TESTLAB] LIGHT LABORATORY INC
[ISSUE DATE] 4/24/2007
[MANUFAC] KINO FLO, INC.
[LUMCAT] BARFLY 200/90 DEGREE
[LUMINAIRE] 16-1/2"L. X 9-1/8"W. X 2-1/4"H. STUDIO FIXTURE
[MORE] WHITE PAINTED REFLECTOR
[MORE] 90 DEGREE SPOT HEXCEL LOUVERS
[BALLASTCAT] KINOFLO BAL-207-120
[BALLAST] 120V 50/60Hz ELECTRONIC
[LAMPPOSITION] 180,90
[LAMPCAT] KINO FLO TRUE MATCH 55Q-K29
[OTHER] INDICATING THE CANDELA VALUES ARE ABSOLUTE AND
[MORE] SHOULD NOT BE FACTORED FOR DIFFERENT LAMP RATINGS.
[_LAMPLUM] 2720
[_INPUT] 120VAC, 118.3W

*10/1/11 BAR-200D matches photometrically to BAR-200G & BAL-207-120

CHARACTERISTICS

Total Rated Lamp Lumens	N.A. (absolute photometry)
Total Luminaire Efficiency	N.A.
CIE Type	Direct
Spacing Criteria (0-180)	0.70
Spacing Criteria (90-270)	0.78
Spacing Criteria (Diagonal)	0.82
Basic Luminous Shape	Rectangular
Luminous Length (0-180)	1.15 ft
Luminous Width (90-270)	0.70 ft
Luminous Height	0.00 ft



LUMINANCE DATA (cd/sq.m)

Angle In Degrees	Average 0-Deg	Average 45-Deg	Average 90-Deg
45	1020	1171	1814
55	326	349	256
65	190	190	126
75	155	103	103
85	766	307	153

IES INDOOR REPORT
PHOTOMETRIC FILENAME : LLI040707F.IES

CANDELA TABULATION

	<u>0</u>	<u>22.5</u>	<u>45</u>	<u>67.5</u>	<u>90</u>
0	1092	1092	1092	1092	1092
5	1003	1010	1021	1023	1025
15	753	769	797	802	814
25	490	504	542	557	566
35	254	255	286	313	305
45	54	59	62	86	96
55	14	15	15	12	11
65	6	6	6	5	4
75	3	3	2	2	2
85	5	5	2	1	1
90	0	0	0	0	0

IES INDOOR REPORT
PHOTOMETRIC FILENAME : LLI040707F.IES

ZONAL LUMEN SUMMARY

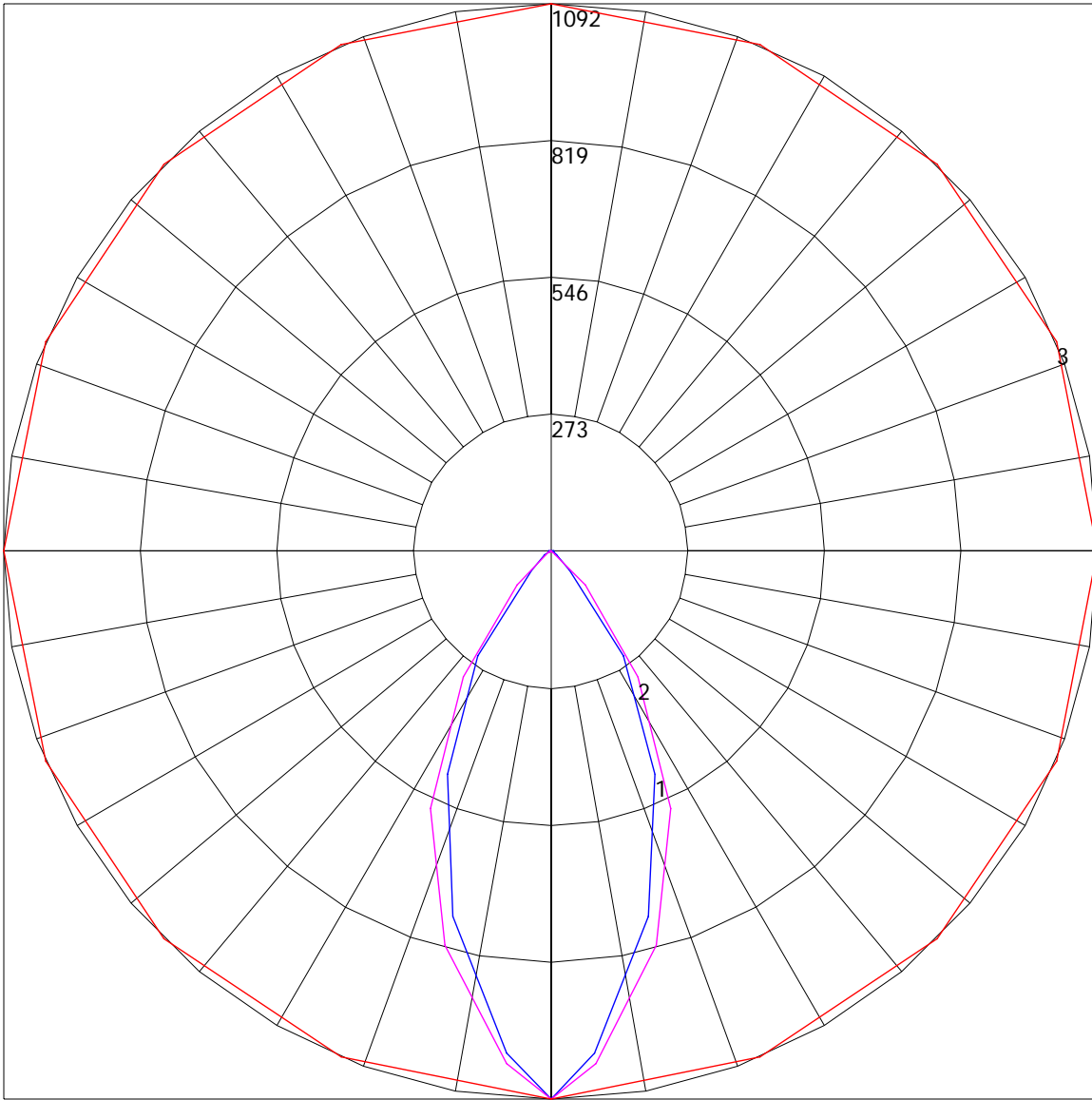
Zone	Lumens	%Lamp	%Fixt
0-30	444.19	N.A.	52.6
0-40	667.65	N.A.	79.1
0-60	827.51	N.A.	98
0-90	844.14	N.A.	100
90-120	0	N.A.	0
90-130	0	N.A.	0
90-150	0	N.A.	0
90-180	0	N.A.	0
0-180	844.14	N.A.	100

Total Luminaire Efficiency = N.A.%

ZONAL LUMEN SUMMARY

Zone	Lumens
0-10	25.21
10-20	171.63
20-30	247.35
30-40	223.46
40-50	124.56
50-60	35.29
60-70	9.07
70-80	4.05
80-90	3.52
90-100	0
100-110	0
110-120	0
120-130	0
130-140	0
140-150	0
150-160	0
160-170	0
170-180	0

POLAR GRAPH



Maximum Candela = 1092 Located At Horizontal Angle = 0, Vertical Angle = 0
1 - Vertical Plane Through Horizontal Angles (0 - 180) (Through Max. Cd.) : BLUE
2 - Vertical Plane Through Horizontal Angles (90 - 270) : MAGENTA
3 - Horizontal Cone Through Vertical Angle (0) (Through Max. Cd.) : RED