

**IES INDOOR REPORT  
PHOTOMETRIC FILENAME : LLI040707E.IES**

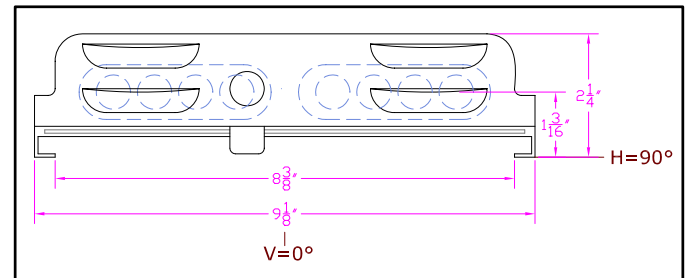
**DESCRIPTION INFORMATION (From Photometric File) \***

IESNA:LM-63-2002  
[TEST] LLI 0407-07E  
[TESTLAB] LIGHT LABORATORY INC  
[ISSUEDATE] 4/24/2007  
[MANUFAC] KINO FLO, INC.  
[LUMCAT] BARFLY 200/OPEN FACE  
[LUMINAIRE] 16-1/2"L. X 9-1/8"W. X 2-1/4"H. STUDIO FIXTURE  
[MORE] WHITE PAINTED REFLECTOR  
[BALLASTCAT] KINOFLO BAL-207-120  
[BALLAST] 120V 50/60Hz ELECTRONIC  
[LAMPPOSITION] 180,90  
[LAMPCAT] KINO FLO TRUE MATCH 55Q-K29  
[OTHER] INDICATING THE CANDELA VALUES ARE ABSOLUTE AND  
[MORE] SHOULD NOT BE FACTORED FOR DIFFERENT LAMP RATINGS.  
[\_LAMPLUM] 2720  
[\_INPUT] 120VAC, 123.8W

\*10/1/11 BAR-200D matches photometrically to BAR-200G & BAL-207-120

**CHARACTERISTICS**

Total Rated Lamp Lumens	N.A. (absolute photometry)
Total Luminaire Efficiency	N.A.
CIE Type	Direct
Spacing Criteria (0-180)	1.26
Spacing Criteria (90-270)	1.30
Spacing Criteria (Diagonal)	1.42
Basic Luminous Shape	Rectangular
Luminous Length (0-180)	1.15 ft
Luminous Width (90-270)	0.70 ft
Luminous Height	0.00 ft



**LUMINANCE DATA (cd/sq.m)**

Angle In Degrees	Average 0-Deg	Average 45-Deg	Average 90-Deg
45	16077	16890	16625
55	15418	15721	14789
65	14193	13497	12106
75	11562	9445	6865
85	5058	1379	920

IES INDOOR REPORT  
PHOTOMETRIC FILENAME : LLI040707E.IES

CANDELA TABULATION

	<u>0</u>	<u>22.5</u>	<u>45</u>	<u>67.5</u>	<u>90</u>
<b>0</b>	1282	1282	1282	1282	1282
<b>5</b>	1263	1264	1267	1267	1267
<b>15</b>	1215	1222	1227	1234	1236
<b>25</b>	1135	1141	1158	1173	1180
<b>35</b>	1009	1022	1052	1064	1064
<b>45</b>	851	871	894	883	880
<b>55</b>	662	688	675	645	635
<b>65</b>	449	467	427	396	383
<b>75</b>	224	225	183	152	133
<b>85</b>	33	36	9	6	6
<b>90</b>	0	0	0	0	0

**IES INDOOR REPORT**  
**PHOTOMETRIC FILENAME : LLI040707E.IES**

**ZONAL LUMEN SUMMARY**

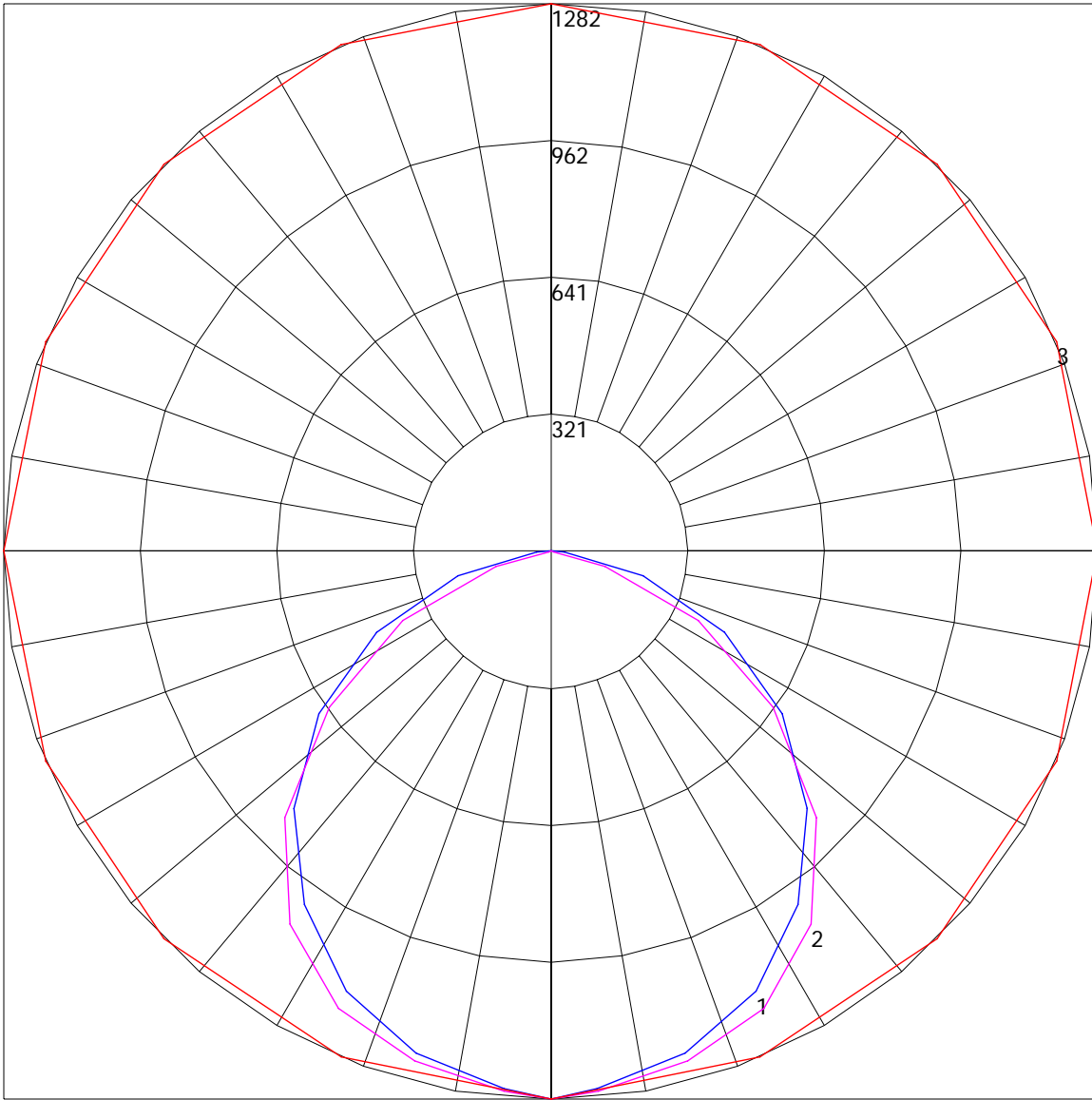
Zone	Lumens	%Lamp	%Fixt
0-30	714.12	N.A.	19.9
0-40	1316.77	N.A.	36.7
0-60	2640.39	N.A.	73.6
0-90	3585.99	N.A.	100
90-120	0	N.A.	0
90-130	0	N.A.	0
90-150	0	N.A.	0
90-180	0	N.A.	0
0-180	3585.99	N.A.	100

Total Luminaire Efficiency = N.A.%

**ZONAL LUMEN SUMMARY**

Zone	Lumens
0-10	30.46
10-20	237.05
20-30	446.61
30-40	602.65
40-50	676.55
50-60	647.08
60-70	517.23
70-80	314.48
80-90	113.9
90-100	0
100-110	0
110-120	0
120-130	0
130-140	0
140-150	0
150-160	0
160-170	0
170-180	0

POLAR GRAPH



Maximum Candela = 1282 Located At Horizontal Angle = 0, Vertical Angle = 0  
# 1 - Vertical Plane Through Horizontal Angles (0 - 180) (Through Max. Cd.) : BLUE  
# 2 - Vertical Plane Through Horizontal Angles (90 - 270) : MAGENTA  
# 3 - Horizontal Cone Through Vertical Angle (0) (Through Max. Cd.) : RED